



Machine Tooling Accessories

潍坊威骐机械有限公司
Weifang Wilda Machinery Co.,Ltd.





目 录

公司简介 Company Introduction 001/002

技术实力 Technical Strength 003/004

高端先进设备 Advanced High-end Equipment 005/008

检测设备 Testing Equipment 009/010

主要产品介绍 Main Products Introduction 011/139



刀柄部分 TOOLHOLDER 011/086



镗刀部分 BORING TOOL 087/098



U钻部分 U DRILLING 099/110



铣刀部分 MILLING CUTTER 111/118



非标刀具部分 NON-STANDARD TOOL 119/139





公司简介 COMPANY INTRODUCTION

公司主要产品有：数控刀具、机床主轴、非标刀具三大系列产品，集中配置了德国DMG五轴联动车铣复合中心、瑞士克林伯格高精万能磨床、DMG车削中心、台湾友佳立式加工中心等高端生产设备300余台，选用德国生产蔡司三坐标测量仪、翰墨动平衡仪、日本三丰轮廓测量仪等国际先进检测设备，配备国内顶尖的热处理加工设备，先进的装备确保了产品的质量。

公司于2009年通过了ISO9001、14001、18001国际质量、环境和职业健康安全三体系认证，研发生产的“维克特”牌系列刀柄、镗刀、铣刀、U钻、机床主轴等产品已经覆盖广东、福建、上海、江苏等20多个省市自治区，部分产品已销往南美、东南亚等国外市场，主轴产品已经为国内多家机床生产企业提供配套服务。

Main products are CNC cutting tools, machine tool spindles and Non-standard cutting tools three series products. Over 300 sets of high-end equipments are centralized configured, such as Germany DMG Five-axis Milling Recombination Centers, Switzerland Kellenberge Ultra-precision Grinders, Korean Doosan Turning Centers. Taiwan Feeler Horizontal & Vertical Machining Center and so on. As the testing equipments, we elects international advanced equipments like Germany Zeiss CMM Instrument, Haimer Dynamic Balancing Instrument, Japanese Mitutoyo Contracer with inland top-class heat treatment machining equipment. Advanced equipments ensure the quality of the products.

In 2009, the company passed the ISO9001, 14001, 18001, international quality, environmental and occupational health and safety three system certification. Self-owned brand "VKT" series toolholders, boring tools, U drillings, milling cutters, turning tools, machine tool spindles, etc. have covered more than 20 provinces, municipalities and autonomous regions including Guangdong, Fujian, Shanghai and Jiangsu. Partial products have sold to South America, Southeast Asia and other overseas markets, as products of spindles have provided related services for several inland machine tool manufacturing enterprises.



DMG加工中心

Accumulate bits improvement and advance into the perfect quality. With the concept of "Details cast Brand", Weifang Wilda Machinery Co.,Ltd. Weifang Economic Development Zone, Weifang City, has introduced advanced production technology process and equipment to improve the equipment production precision. The company has more than 300 sets of international advanced equipments produced by the United States, Germany and so on. Furthermore, company also has high quality R & D team, professional technical team, as well as efficient management system. Therefore, they could ensure the product quality and provide leading innovation product through setting strict product quality standards and control every step and detail that involved.

The company has accumulated rich practical experience at mechanical manufacturing. A team of more than 60 high-quality engineering and technical personnel, which including 10 senior engineers, 36 senior technical staff, and more than 20 research and design staff. Meanwhile, the company actively cooperate with the industrial technology innovation project assumed by institution of higher education and academy, such as Beijing University of Technology. More scientific and technological resources actively expands cooperation channels in scientific and technological. Further cooperation with international science and technology development plan, participate in and organize major industrial technology innovation cooperation projects, and actively participate in both international and domestic science and technology cooperation in wider range and higher levels.

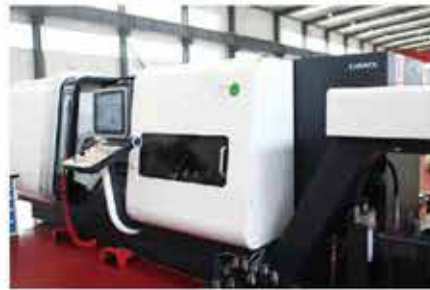


友佳立式加工中心
Feeler Vertical
Machining Center

 技术实力
TECHNICAL STRENGTH



刀柄动平衡仪
Toolholder Dynamic Balancer



DMG五轴联动车铣复合中心
DMG Five-axis Milling
Recombination Centers



数控外圆磨床
NC External Grinder



数控内孔磨床
NC Internal Grinder

 高端先进设备
ADVANCED HIGH-END EQUIPMENT



精密磨床
Precision Grinder



加工中心区
Machining Center



高精外圆磨床
High-precision External Grinder



刀柄车间全景
Tool Workshop Overall View



车削中心
Turning Center

The company has more than ten pieces of holder and tool production lines, together with import high precision cylindrical grinder, taper hole grinder, Switzerland Fischer center hole grinder, as well as advanced heat treatment equipment and testing instruments. Provided with the specialized production experience, they can produce various products, such as high precision toolholders, boring tools, U drilling, milling cutters turning tools, non-standard tools and so on. We can promptly arrange production according to customers' requirements so as to delivery in time. In addition, we provide customers with strong support to solve various complex problems.

 高端先进设备
ADVANCED HIGH-END EQUIPMENT

热处理：高频淬火、渗碳淬火、氮化处理、深冷处理、真空淬火处理等。

Heat treatment: high frequency quenching, intermediate frequency quenching, salt bath quenching, cemented quenching, nitrogen treatment, cryogenic treatment, vacuum hardening treatment etc.



高频淬火炉
High Frequency Quenching Furnace



热处理流水线 (包括气体渗碳氮化炉)
Heat Treatment Production Line(Gas Carburizing Nitriding Furnace included)



深冷炉
Cryogenic Furnace



真空淬火炉
Vacuum Quenching Furnace



离子氮化炉
Ion-nitriding Furnace

检测设备 TESTING EQUIPMENT

细致造就差别，品质打造辉煌
Meticulous makes difference, Quality creates brilliant

公司秉持严谨认真、精益求精的科学态度，配合先进的分析测试手段，不断进取，不断完善，保证了公司产品的领先性、全面性、稳定性以及竞争力。

检验设备：卓勒对刀仪、材料化学成分分析仪、金相显微镜、硬度计、蔡司三坐标测量机、三丰圆度测量仪、三丰粗糙度轮廓度测量仪。



动平衡仪
Dynamic Balancer



材料化学成分分析仪
Material Chemical
Composition Analyzer



硬度计
Sclerometer



金相显微镜
Metallographic Microscope



三丰粗糙度轮廓度测量仪
Mitutoyo Roughness Profile
Measuring Instrument

Upholding the rigorous, conscientious and excellence scientific attitude, coupled with advanced analysis methods, the company keep continuously progressive and consummate, and ensure the primacy, comprehensiveness, stability and competitiveness of the products.

Testing Equipment: Zoller tool checking instrument, Material Chemical Composition Analyzer, Metallographic Microscope, Sclerometer, Zeiss CMM, Mitutoyo Roundness Measuring Instrument, Mitutoyo Roughness Profile Measuring Instrument.



三丰圆度测量仪
Mitutoyo Roundness Measuring Instrument



蔡司三坐标测量机
Zeiss CMM



011

刀柄部分

TOOLHOLDER



001 弹性筒夹刀柄
COLLET CHUCK
BT NO-ER NO-L

特性

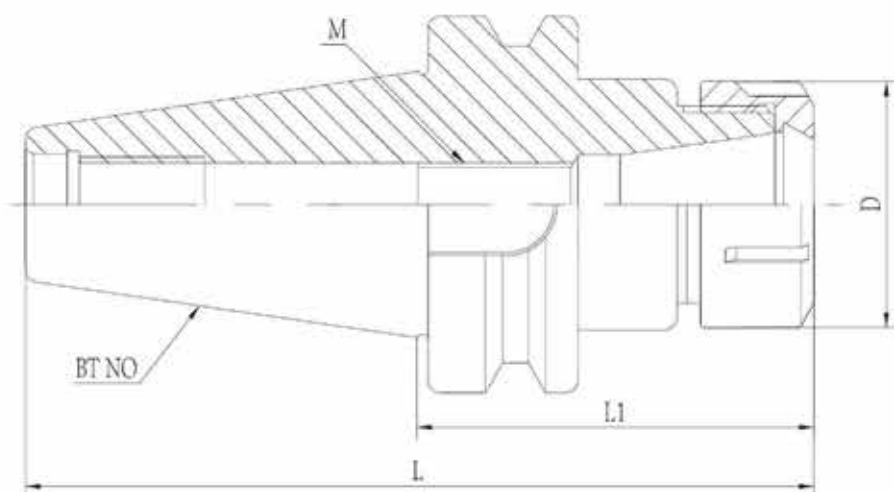
- BT NO锥柄锥度执行AT3标准
- 内外锥同轴度0.005mm
- 预测动平衡设计

Features

- BT NO taper shank is in conformity with AT3 standard;
- Concentricity of the inner and outer cone: 0.005mm;
- Default balancing design.



JIS B6339-1998/DIN6499



刀柄部分 TOOLHOLDER

非标准刀具部分
NON-STANDARD TOOL

铣刀部分
MILLING CUTTER

孔部分
H DRILLING

镗刀部分
BORING TOOL

刀柄部分
TOOLHOLDER

技术参数：TECHNICAL SPECIFICATIONS

规格 MODEL NO	夹持范围 CAPACITY	L	L1	D	筒 夹 PAGE 82	螺 帽 PAGE 80	扳 手 PAGE 85	
BT30	-ER11-60☆ -100	0.5-7	108.4	60	19	ER11	ER11-A	OW/ER11
	148.4		100	19				
	-ER16-60☆ -100	1-10	108.4	60	28	ER16	ER16-A	OW/ER16
	148.4		100	28				
	-ER20-60☆ -100	2-13	108.4	60	34	ER20	ER20-A	OW/ER20
	148.4		100	34				
-ER25-60☆ -100	2-16	108.4	60	42	ER25	ER25-UM	UM/ER25	
148.4		100	42					
-ER32-60☆ -100	3-20	108.4	60	50	ER32	ER32-UM	UM/ER32	
148.4		100	50					
BT40	-ER11-70 -100	0.5-7	135.4	70	19	ER11	ER11-A	OW/ER11
	165.4		100	19				
	-ER16-70☆ -100☆ -150	1-10	135.4	70	28	ER16	ER16-A	OW/ER16
	215.4		150	28				
	135.4		70	34				
	-ER20-70☆ -100☆ -150	2-13	165.4	100	34	ER20	ER20-A	OW/ER20
	215.4		150	34				
	135.4		70	42				
	-ER25-70☆ -100☆ -150	2-16	165.4	100	42	ER25	ER25-UM	UM/ER25
	215.4		150	42				
	135.4		70	50				
	-ER32-70☆ -100☆ -150	3-20	165.4	100	50	ER32	ER32-UM	UM/ER32
	215.4		150	50				
	145.4		70	63				
-ER40-80☆ -100 -150	3-26	165.4	100	63	ER40	ER40-UM	UM/ER40	
215.4		150	63					
171.8		70	28					
BT50	-ER16-70 -100☆ -150	1-10	201.8	100	28	ER16	ER16-A	OW/ER16
	251.8		150	28				
	171.8		70	34				
	-ER20-70 -100☆ -150	2-13	201.8	100	34	ER20	ER20-A	OW/ER20
	251.8		150	34				
	171.8		70	42				
	-ER25-70 -100☆ -150	2-16	201.8	100	42	ER25	ER25-UM	UM/ER25
	251.8		150	42				
	171.8		70	50				
	-ER32-70 -100☆ -150	3-20	201.8	100	50	ER32	ER32-UM	UM/ER32
	251.8		150	50				
	181.8		80	63				
	-ER40-80 -100☆ -150 -200	3-26	201.8	100	63	ER40	ER40-UM	UM/ER40
	251.8		150	63				
301.8	200		63					
301.8	200		63					

注：1.带☆为常备库存，不带☆按订单生产
2.可做动平衡G6.3/12000rpm，另外加价
3.M处刀具定长结构可按客户要求订做

Note: 1. Product with ☆ mark is for running stock and product without ☆ can accept order production.
2. We can provide dynamic balance G6.3/12000rpm. Price would be advanced.
3. Fixed-length structure of M can be customized.

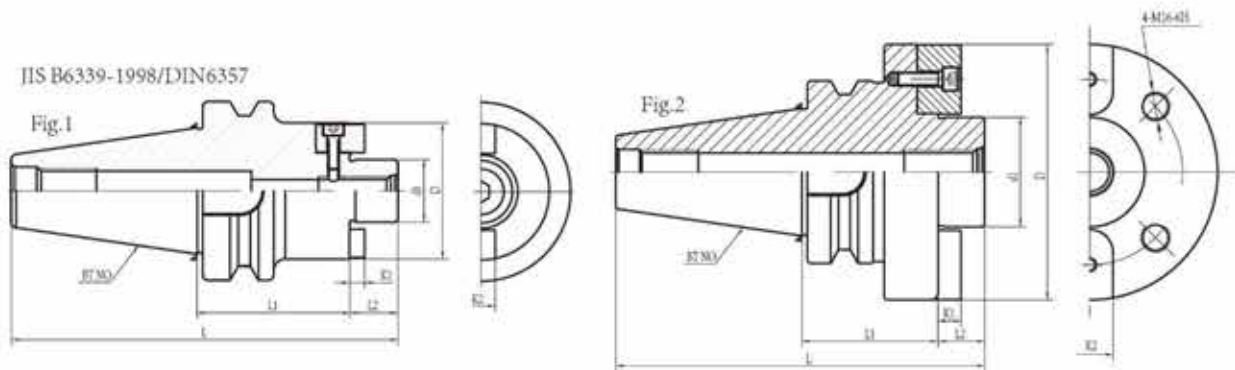
002 面铣刀柄
FMA FACE MILL HOLDER
 BT NO-FMA NO-L

特性

- BT NO锥柄锥度执行AT3标准。
- d1外圆执行公差h5。

Features

- BT NO taper shank is in conformity with AT3 standard;
- Excircle d1 is in conformity with tolerance h5.



刀柄部分 TOOLHOLDER

非标准刀具部分
NON-STANDARD TOOL

铣刀部分
MILLING CUTTER

孔部分
DRILLING

镗刀部分
BORING TOOL

刀柄部分
TOOLHOLDER

技术参数：TECHNICAL SPECIFICATIONS

规格 MODEL NO.		型式 Type	d1	D	L	L1	L2	K1	K2
BT30	-FMA25.4-45	Fig.1	25.4	50	113.4	45	20	4.52	9.52
	-60				128.4	60			
	-FMA31.75-45	Fig.1	31.75	60	115.4	45	22	6.7	12.7
BT40	-FMA25.4-45	Fig.1	25.4	50	130.4	45	20	4.52	9.52
	-60				145.4	60			
	-90				175.4	90			
	-105				190.4	105			
	-FMA31.75-45	Fig.1	31.75	60	132.4	45	22	6.7	12.7
	-75				162.4	75			
	-90				177.4	90			
	-FMA38.10-60	Fig.1	38.10	75	150.4	60	25	8.87	15.87
-FMA-50.8-60	Fig.1	50.8	98	161.4	60	36	9.75	19.05	
BT50	-FMA25.4-45	Fig.1	25.4	50	166.8	45	20	4.52	9.52
	-90				211.8	90			
	-150				271.8	150			
BT50	-FMA31.75-45	Fig.1	31.75	60	168.8	45	22	6.7	12.70
	-75				198.8	75			
	-105				228.8	105			
	-FMA38.10-45	Fig.1	38.10	80	171.8	45	25	8.87	15.87
	-75				201.8	75			
	-FMA50.80-45	Fig.1	50.80	98	182.8	45	36	9.75	19.05
	-75				212.8	75			
	-FMA47.62-75	Fig.2	47.62	128.75	208.8	75	32	12.5	25.4

003 面铣刀柄
FACE MILL HOLDER
BT NO-FMB NO-L

特性

- BT NO锥柄锥度执行AT3标准。
- d1外圆执行公差h5。

Features

- BT NO taper shank is in conformity with AT3 standard;
- Excircle d1 is in conformity with tolerance h5.



JIS B6339-1998/DIN6357

Fig.1

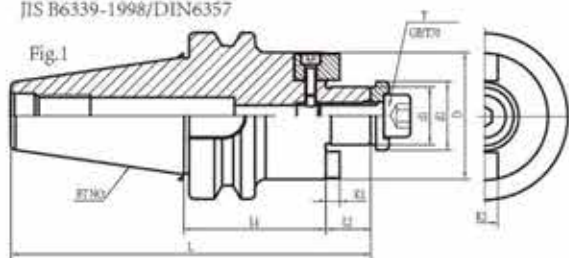
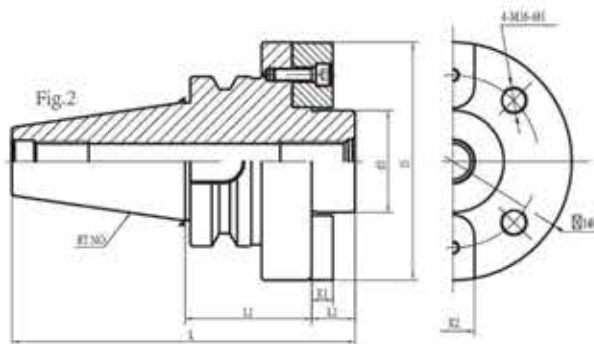


Fig.2



刀柄部分 TOOLHOLDER

非标准刀具部分
NON-STANDARD TOOL

铣刀部分
MILLING CUTTER

铰刀部分
FL DRILLING

镗刀部分
BORING TOOL

刀柄部分
TOOLHOLDER

技术参数： TECHNICAL SPECIFICATIONS

规格 MODEL NO	型式 Type	d1	d2	D	L	L1	L2	K1	K2	T	
BT30	-FMB22-45☆	Fig.1	22	26	45	109.9	45	16.5	4.8	10	M10×30
	-60☆					124.9	60				
	-FMB27-45☆	Fig.1	27	33	54	111.9	45	18.5	5.8	12	M12×30
	-60☆					126.9	60				
-FMB32-60☆	Fig.1	32	41	58	130.4	60	22	6.8	14	M16×35	
BT40	-FMB22-45☆	Fig.1	22	26	48	126.9	45	16.5	4.8	10	M10×30
	-60					141.9	60				
	-100☆					181.9	100				
	-150					231.9	150				
	-FMB27-45☆	Fig.1	27	33	60	128.9	45	18.5	5.8	12	M12×30
	-60					143.9	60				
	-100☆					183.9	100				
	-150					233.9	150				
	-200	283.9	200								
	-FMB32-60☆	Fig.1	32	41	62	147.4	60	22	6.8	14	M16×35
	-100☆					187.4	100				
	-150					237.4	150				
	-200					287.4	200				
	-FMB40-60☆	Fig.1	40	48	80	150.4	60	25	8	16	M16×35
	-100☆					190.4	100				
	-150					240.4	150				
-200	290.4					200					
BT50	-FMB22-60	Fig.1	22	26	48	178.3	60	16.5	4.8	10	M10×30
	-100☆					218.3	100				
	-150					268.3	150				
	-200					318.3	200				
	-FMB27-60	Fig.1	27	33	60	180.3	60	18.5	5.8	12	M12×30
	-100☆					220.3	100				
	-150					270.3	150				
	-200					320.3	200				
	-FMB32-60	Fig.1	32	41	73	183.8	60	22	6.8	14	M16×35
	-100☆					223.8	100				
	-150					273.8	150				
	-200					323.8	200				
	-FMB40-60	Fig.1	40	48	80	186.8	60	25	8	16	M16×35
	-100☆					226.8	100				
	-150					276.8	150				
	-200					326.8	200				
-FMB60-75	Fig.2	60	-	140	201.8	75	25	12.5	25.4	-	
-100					226.8	100					

注：1. 带☆为常备库存，不带☆按订单生产
2. 如需订中心出水或法兰盘出水请表明

Note: 1. Product with ☆ mark is for running stock and product without ☆ can accept order production.
2. When order center cooling or flange cooling, please specify.

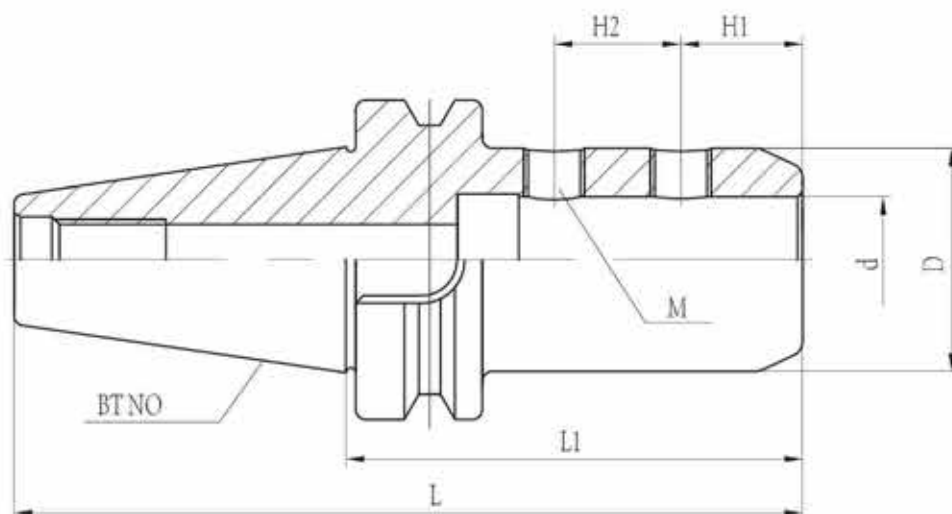
004 侧固式刀柄
SLA SIDE LOCK END MILL HOLDER
 BT NO-SLA NO-L

特性

- BT NO锥柄锥度执行AT3标准
- 内孔d公差H5
- 预测动平衡设计

Features

- BT NO taper shank is in conformity with AT3 standard;
- Tolerance H5 for inner bore d;
- Default balancing design.



刀柄部分 TOOLHOLDER

非标准刀具部分
NON-STANDARD TOOL

铣刀部分
MILLING CUTTER

孔钻部分
HOLE DRILLING

镗刀部分
BORING TOOL

刀柄部分
TOOLHOLDER

技术参数： TECHNICAL SPECIFICATIONS

规格 MODEL NO		L	L1	H1	H2	M	D	d
BT30	-SLA6-60	108.4	60	12	10	M6	25	6
	-SLA8-60			14	12	M8	28	8
	-SLA10-60			15	14	M10	35	10
	-SLA12-60			20	16		40	12
	-SLA16-75	123.4	75	22	18	M12	45	16
	-SLA20-75☆			25	20		50	20
	-SLA25-80☆			128.4	80	24	25	55
BT40	-SLA6-75	140.4	75	12	10	M6	25	6
	-SLA8-75			14	12	M8	28	8
	-SLA10-75			15	14	M10	35	10
	-SLA12-75			20	16		40	12
	-SLA16-75			22	18	45	16	
	-SLA20-90☆	155.4	90	25	20	M12	50	20
	-SLA25-90☆			24	25		55	25
	-SLA32-100☆	165.4	100	24	28	M16	60	32
	-SLA40-115☆	180.4	115	30	32	M20	70	40
BT50	-SLA6-75	176.8	75	12	10	M6	25	6
	-SLA8-75			14	12	M8	28	8
	-SLA10-75			15	14	M10	35	10
	-SLA12-90	20	16	40	12			
	-SLA16-90	191.8	90	22	18	M12	45	16
	-SLA20-90☆			25	20		50	20
	-SLA25-100☆	201.8	100	24	25	M16	55	25
	-SLA32-105☆	206.8	105	24	28		60	32
	-SLA40-115	216.8	115	30	32	M20	70	40
	-SLA42-120						221.8	120

注：带☆为常备库存，不带☆按订单生产

Note: Product with ☆ mark is for running stock and product without ☆ can accept order production.

005 侧固式刀柄2
SLN SIDE LOCK END MILL HOLDER
BT NO-SLN NO-L

特性

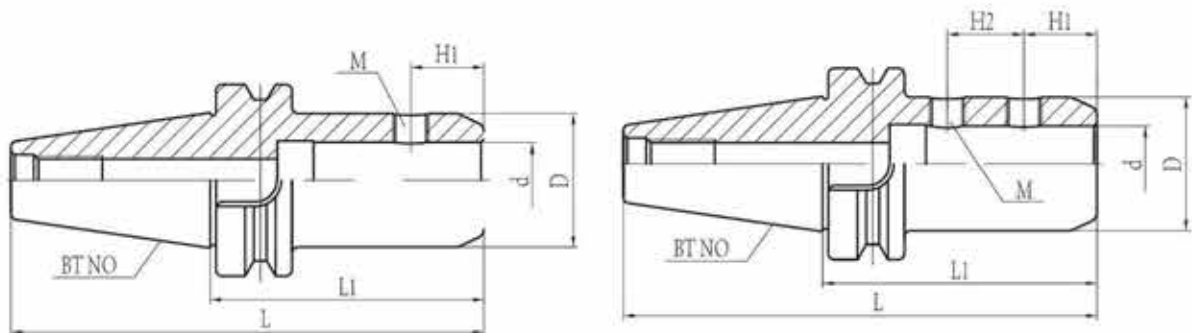
- BT NO锥柄锥度执行AT3标准
- 内孔d公差H5
- 预测动平衡设计

Features

- BT NO taper shank is in conformity with AT3 standard;
- Tolerance H5 for inner bore d;
- Default balancing design.



JIS B6339/DIN1835



刀柄部分 TOOLHOLDER

非标准刀具部分
NON-STANDARD TOOL

铣刀部分
MILLING CUTTER

孔部分
H DRILLING

镗刀部分
BORING TOOL

刀柄部分
TOOLHOLDER

技术参数：TECHNICAL SPECIFICATIONS

规格 MODEL NO		L	L1	H1	H2	M	D	d	型式 Type			
BT30	-SLN6-60	108.4	60	18		M6	25	6	Fig1			
	-SLN8-60					M8	28	8	Fig1			
	-SLN10-60					M10	35	10	Fig1			
	-SLN12-60					M12	42	12	Fig1			
	-SLN16-75	123.4	75	24		M14	48	16	Fig1			
	-SLN20-63	111.4	63	25		M16	52	20	Fig1			
	-SLN20-75	123.4	75						Fig1			
	-SLN25-80	128.4	80	24	25	M18	65	25	Fig2			
	-SLN25-90	138.4	90						Fig2			
	-SLN25-100	148.4	100						Fig2			
BT40	-SLN6-50	115.4	50	18		M6	25	6	Fig1			
	-SLN8-50					M8	28	8	Fig1			
	-SLN10-63	128.4	63	20		M10	35	10	Fig1			
	-SLN12-63								M12	42	12	Fig1
	-SLN16-63								M14	48	16	Fig1
	-SLN20-63 ☆								M16	52	20	Fig1
	-SLN25-90	155.4	90	24	25	M18	65	25	Fig2			
	-SLN25-100 ☆	165.4	100						Fig2			
	-SLN32-100 ☆	170.4	105	30	28	M20	72	32	Fig2			
	-SLN40-105 ☆								80	40	Fig2	
-SLN42-105	82								42	Fig2		
BT50	-SLN6-63	164.8	63	18		M6	25	6	Fig1			
	-SLN8-63					M8	28	8	Fig1			
	-SLN10-63					M10	35	10	Fig1			
	-SLN12-80					M12	42	12	Fig1			
	-SLN16-80	181.8	80	24		M14	48	16	Fig1			
	-SLN20-80								M16	52	20	Fig1
	-SLN25-100	201.8	100	24	25	M18	65	25	Fig2			
	-SLN32-105 ☆	206.8	105						28	M20	72	32
	-SLN40-115 ☆	216.8	115	30	32	M20	80	40	Fig2			
	-SLN42-120	221.8	120						82	42	Fig2	

注：1. 带☆为常备库存，不带☆按订单生产
2. 可做动平衡G6.3/12000rpm，另外加价

Note: 1. Product with ☆ mark is for running stock and product without ☆ can accept order production.
2. We can provide dynamic balance G6.3/12000rpm. Price would be advanced.

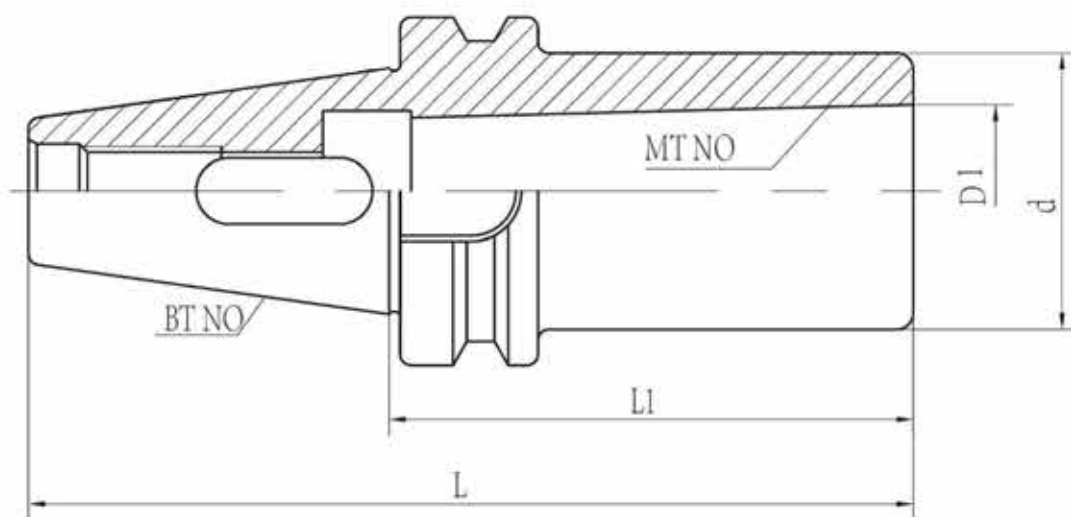
006 数控变径套 (扁尾型)
 NC MORSE TAPER HOLDER (A TYPE)
 BT NO-MTA NO-L

特性

- BT NO锥柄锥度执行AT3标准
- 内外锥同轴度0.005mm

Features

- BT NO taper shank is in conformity with AT3 standard;
- Concentricity of the inner and outer cone: 0.005mm



刀柄部分 TOOLHOLDER

非标准刀具部分
NON-STANDARD TOOL

铣刀部分
MILLING CUTTER

孔部分
H DRILLING

镗刀部分
BORING TOOL

刀柄部分
TOOLHOLDER

型 号 MODEL NO.		L	L1	D1	D
BT30	-MTA1-45☆	93.4	45	12.065	25
	-MTA2-60☆	108.4	60	17.78	32
	-MTA3-80☆	128.4	80	23.825	40
BT40	-MTA1-45☆	110.4	45	12.065	25
	-120	185.4	120		
	-MTA2-16☆	125.4	60	17.78	32
	-120	185.4	120		
	-MTA3-75☆	140.4	75	23.825	40
	-135	200.4	135		
	-MTA4-95☆	160.4	95	31.267	48
	-165	230.4	165		
BT50	-MTA1-45	146.8	45	12.065	25
	-120	221.8	120		
	-MTA2-60☆	161.8	60	17.78	32
	-135	236.8	135		
	-MTA3-75☆	176.8	75	23.825	40
	-150	251.8	150	23.825	40
	-MTA4-90☆	191.8	90	31.267	48
	-180	281.8	180		
	-MTA5-105☆	211.8	110	44.399	63
	-210	311.8	210		

注：带☆为常备库存，不带☆按订单生产

Note: Product with ☆ mark is for running stock and product without ☆ can accept order production.

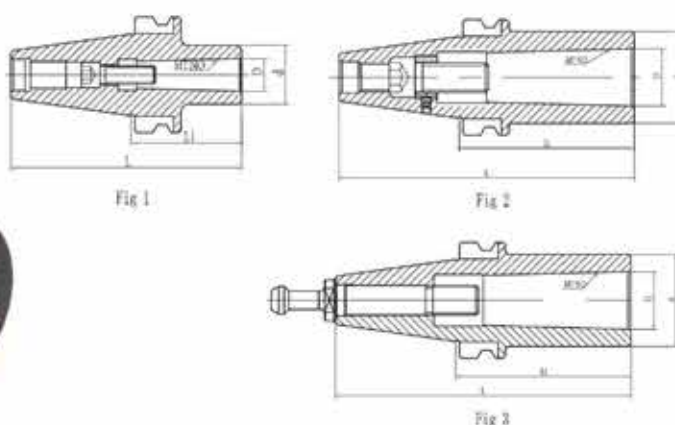
007 数控变径套 (后拉式)
NC MORSE TAPER HOLDER (B TYPE)
 BT NO-MTB NO-L

特性

- BT NO锥柄锥度执行AT3标准
- 内外锥同轴度0.005mm

Features

- BT NO taper shank is in conformity with AT3 standard;
- Concentricity of the inner and outer cone: 0.005mm



技术参数： TECHNICAL SPECIFICATIONS

规格 MODEL NO.		L	L1	D	d	型式 Type
BT30	-MTB1-45☆	93.4	45	12.065	25	Fig1
	-MTB2-60☆	108.4	60	17.78	32	Fig2
	-MTB3-80	128.4	80	23.825	40	Fig2
BT40	-MTB1-45	110.4	45	12.065	25	Fig1
	-MTB2-50☆	115.4	50	17.78	32	Fig1
	-MTB3-75☆	140.4	75	23.825	40	Fig1,3
	-MTB4-90☆	155.4	90	31.267	48	Fig3
	-95☆	160.4	95	31.267	48	Fig2
BT50	-MTB1-45	146.8	45	12.065	25	Fig1
	-MTB2-45☆	146.8	45	17.78	32	Fig1
	-MTB3-60☆	161.8	60	23.825	40	Fig1
	-MTB4-90☆	191.8	90	31.267	48	Fig1
	-MTB5-120☆	221.8	120	44.399	63	Fig2

注：带☆为常备库存，不带☆按订单生产 Note: Product with ☆ mark is for running stock and product without ☆ can accept order production.

刀柄部分 TOOLHOLDER

非研刀具部分
NON-STANDARD TOOL

铣刀部分
MILLING CUTTER

铰刀部分
REDRILLING

镗刀部分
BORING TOOL

刀柄部分
TOOLHOLDER

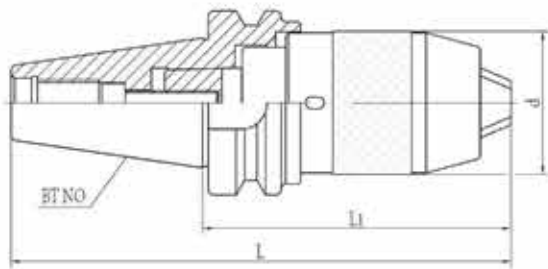
008 直结式钻夹头刀柄 APU DRILL CHUCK HOLDER BT NO-APU NO-L

特性

○BT NO锥柄锥度执行AT3标准

Features

○BT NO taper shank is in conformity with AT3 standard.



技术参数： TECHNICAL SPECIFICATIONS

规格 MODEL NO		L	L1	d
BT30	-APU08-80☆	128.4	80	37
	-APU13-100☆	148.4	100	49
	-APU16-115	163.4	115	54
BT40	-APU08-85☆	150.4	85	37
	-APU13-105☆	170.4	105	49
	-APU16-120☆	185.4	120	54
BT50	-APU08-95	196.8	95	37
	-APU13-120☆	221.8	120	49
	-APU16-130☆	231.8	130	54
	-APU16-165	266.8	165	
	-APU16-190	291.8	190	

注：带☆为常备库存，不带☆按订单生产

Note: Product with ☆ mark is for running stock and product without ☆ can accept order production.

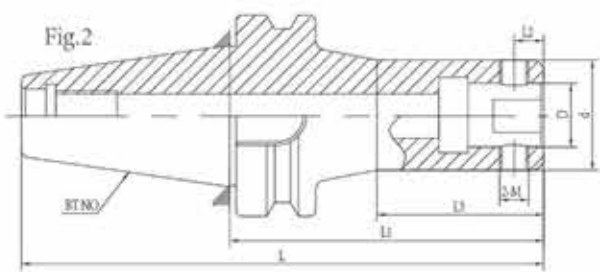
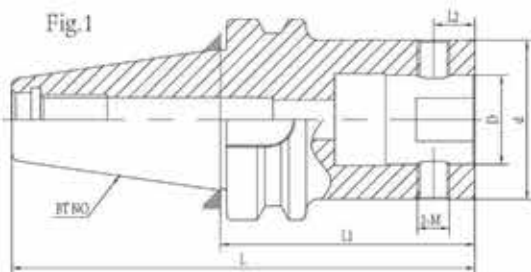
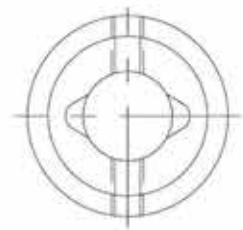
009 精镗刀柄
DCK MICRO BORING BAR
 BT NO-BSA NO-L

特性

- BT NO锥柄锥度执行AT3标准
- D内孔执行公差H5
- 整支中心出水利于出水及抗震

Features

- BT NO taper shank is in conformity with AT3 standard;
- Inner bore D is in conformity with tolerance H5;
- Entire center cooling is good for through coolant and antivibration.



刀柄部分 TOOLHOLDER

非研刀部分
NON-STANDARD TOOL

铣刀部分
MILLING CUTTER

孔部分
H DRILLING

镗刀部分
BORING TOOL

刀柄部分
TOOLHOLDER

技术参数：TECHNICAL SPECIFICATIONS

规格 MODEL NO		型式 Type	D	d	L	L1	L2	L3	M	θ	
BT30	-DCK1-55	Fig.1	11	19	103.4	55	5.05		M5×0.5		
	-70				118.4	70					
	-DCK2-80		14	24	128.4	80	6.62				
	-DCK3-80		18	31	128.4	80	8		-		M6×0.75
	-DCK4-70		22	39	118.4	70	10		M8×0.75		
	-DCK5-70		28	50	118.4	70	13		M10×1		
-DCK6-60	36	64	108.4	60	16	M12×1					
BT40	-DCK1-100	Fig.2	11	19	165.4	100	5.05	60		10°	
	-130	195.4			130						
	-DCK2-75	Fig.1	14	24	140.4	75	6.62		M5×0.5		
	-100	165.4			100						
	-130	195.4			130						
	-160	125.4			160						
	-DCK3-80	Fig.1	18	31	145.4	80	8		M6×0.75		
	-100	165.4			100						
	-135	200.4			135						
	-165	230.4			165						
	-DCK4-70	Fig.1	22	39	135.4	70	10		M8×0.75		
	-100	165.4			100						
	-150	215.4			150						
	-170	235.4			170						
	-DCK5-60	Fig.1	28	50	125.4	60	13			M10×1	
	-80				145.4	80					
	-100				165.4	100					
	-150				215.4	150					
-DCK6-55	36				64	120.4					
-100		165.4	100								
-150		215.4	150								
BT50	-DCK1-115	Fig.2	11	19	216.8	115	5.05	60		10°	
	-145	246.8			145						
	-DCK2-105	Fig.1	14	24	206.8	105	6.62		M5×0.5		
	-135	236.8			135						
	-165	266.8			165						
	-DCK3-110	Fig.1	18	31	211.8	110	8		M6×0.75		
	-140	241.8			140						
	-170	271.8			170						
	-DCK4-100	Fig.1	22	39	201.8	100	10		M8×0.75		
	-160	261.8			160						
	-205	306.8			205						
	-DCK5-90	Fig.1	28	50	191.8	90	13			M10×1	
	-165	266.8			165						
	-210	311.8			210						
	-270	371.8			270						
	-DCK6-85	Fig.1	36	64	186.8	85	16			M12×1	
	-155				256.8	155					
	-215				316.8	215					
-250	351.8				250						
-300	401.8				300						
-350	451.8	350									

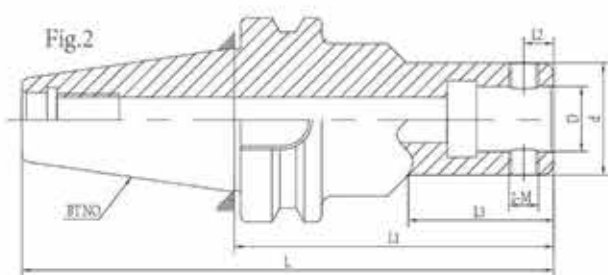
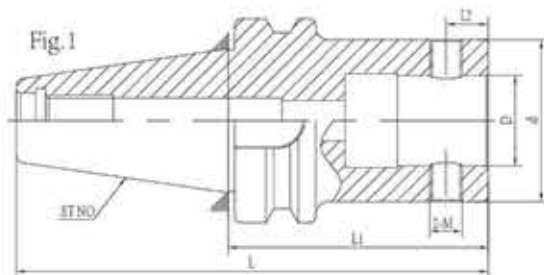
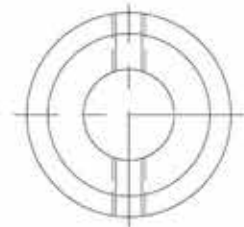
010 双刃粗镗刀柄
LBK TWIN-BORE CUTTER TOOL HOLDER
 BT NO-LBK NO-L

特性

- BT NO锥柄锥度执行AT3标准
- D内孔执行公差H5
- 整支中心出水利于出水及抗震

Features

- BT NO taper shank executives AT3 standard;
- Tolerance H5 for D inner bore;
- Entire center cooling is good for through coolant and antivibration.



刀柄部分 TOOLHOLDER

非研刀部分
NON-STANDARD TOOL

铣刀部分
MILLING CUTTER

孔部分
H DRILLING

镗刀部分
BORING TOOL

刀柄部分
TOOLHOLDER

技术参数： TECHNICAL SPECIFICATIONS

规格 MODEL NO.		型式 Type	Ø	φ	L	L1	L2	L3	M	
BT30	-LBK1-70	Fig.1	11	19	118.4	70	5.05	-	M4×0.5	
	-LBK2-80		14	24	128.4	80	6.55		M5×0.5	
	-LBK3-80		18	31	128.4	80	8.05		M6×0.75	
	-LBK4-70		22	39	118.4	70	10.05		M8×0.75	
	-LBK5-60		28	50	108.4	60	13.05		M10×1	
	-LBK6-60		36	64	108.4	60	16.05		M12×1	
BT40	-LBK1-75	Fig.1	11	19	140.4	75	5.05	-	M4×0.5	
	-105				170.4	105				
	-LBK2-85		14	24	150.4	85	6.55		M5×0.5	
	-115				180.4	115				
	-LBK3-95	Fig.1	18	31	160.4	95	8.05	M6×0.75		
	-125				190.4	125				
	-155		220.4	155						
	-LBK4-85		22	39	135.4	70			10.05	M8×0.75
	-130	195.4			130					
	-175	240.4	175							
	-LBK5-75	Fig.1	28	50	140.4	75	13.05	M10×1		
	-125				190.4	125				
	-175		240.4	175						
	-LBK6-65		36	64	130.4	65	16.05		M12×1	
-115	180.4	115								
-165	230.4	165								
BT50	-LBK1-115	Fig.2	11	19	216.8	115	5.05	40	M4×0.5	
	-145				246.8	145		70		
	-LBK2-110	Fig.1	14	24	211.8	110	6.55	-	M5×0.5	
	-140				241.8	140				
	-LBK3-125		18	31	226.8	125			8.05	M6×0.75
	-155				256.8	155				
	-LBK4-115	Fig.1	22	39	216.8	115	10.05	-	M8×0.75	
	-145				246.8	145				
	-175		276.8	175						
	-205		306.8	205						
	-LBK5-105	Fig.1	28	50	206.8	105	13.05	-	M10×1	
	-180				281.8	180				
	-240		341.8	240						
	-300		401.8	300	195					
	-LBK6-95	Fig.1	36	64	196.8	95	16.05	-	M12×1	
	-170				271.8	170				
-230	331.8				230					
-290	391.8				290					
-350	451.8	350	280							

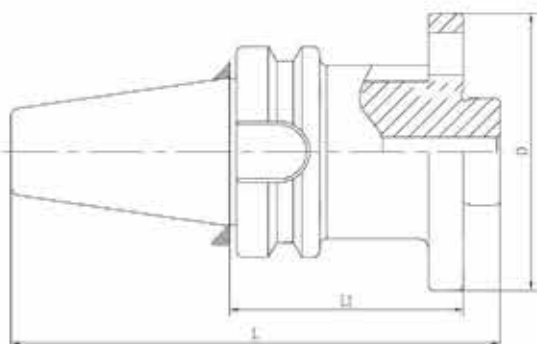
011 大孔径粗镗刀柄
BST LARGE SIZE BORING BAR
 BT NO-BST-L

特 性

- BT NO锥柄锥度执行AT3标准
- 直台执行公差h6
- 整支中心出水利于出水及抗震

Features

- BT NO taper shank is in conformity with AT3 standard;
- Straight set is in conformity with tolerance h6;
- Entire center cooling is good for through coolant and antivibration.



技术参数： TECHNICAL SPECIFICATIONS

规 格 MODEL NO		D	L	Lt
BT40	-BST-70	95	146.4	70
	-BST-100		212.8	100
-BST-150	262.8		150	
-BST-200	312.8		200	
BT50	-BST-250		362.8	250
	-BST-300		412.8	300
	-BST-350		462.8	350
	-BST-400		512.8	400

刀柄部分 TOOLHOLDER

非标准刀具部分
NON-STANDARD TOOL

铣刀部分
MILLING CUTTER

铰刀部分
D DRILLING

镗刀部分
BORING TOOL

刀柄部分
TOOLHOLDER

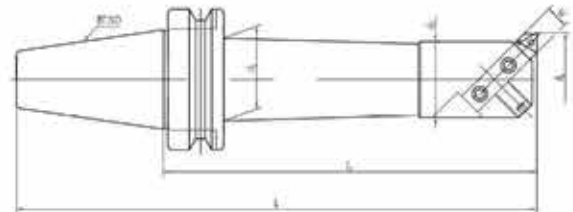
012 45° 粗镗刀柄 45° BSA BORING BAR BT NO-BSA NO-L1

特性

- BT NO锥柄锥度执行AT3标准
- 镗盲孔专用

Features

- BT NO taper shank is in conformity with AT3 standard;
- Special for boring blind hole.



技术参数： TECHNICAL SPECIFICATIONS

规格 MODEL NO	d1		d2	d3	L1	L	W
	最小加工孔Min.	最大加工孔Max.					
BT40-BSA25-120	25	38	20	22	120	185.4	8
BT40-BSA30-150	30	42	24	26	150	215.4	8
BT40-BSA38-165	38	52	30	33	165	230.4	10
BT40-BSA42-165	42	56	34	37	165	230.4	10
BT40-BSA50-165	50	65	40	44	165	230.4	13
BT40-BSA62-180	62	90	50	56	180	245.4	16
BT40-BSA72-180	72	110	60	62	180	245.4	19
BT40-BSA90-180	90	125	75	62	180	245.4	19
BT50-BSA25-135	25	38	20	22	135	236.8	8
BT50-BSA30-165	30	42	24	26	165	266.8	8
BT50-BSA38-180	38	52	30	33	180	281.8	10
BT50-BSA42-210	42	56	34	37	210	311.8	10
BT50-BSA50-180	50	65	40	44	180	281.8	13
BT50-BSA50-240	50	65	40	44	240	341.8	13
BT50-BSA62-195	62	90	50	56	195	296.8	16
BT50-BSA62-270	62	90	50	56	270	371.8	16
BT50-BSA72-195	72	110	60	66	195	296.8	19
BT50-BSA72-285	72	110	60	66	285	386.8	19
BT50-BSA90-210	90	125	75	80	210	311.8	19
BT50-BSA90-300	90	125	75	80	300	401.8	19
BT50-BSA105-195	105	160	90	88	195	296.8	25
BT50-BSA105-285	105	160	90	94	285	386.8	25
BT50-BSA130-255	130	190	110	99	255	356.8	25

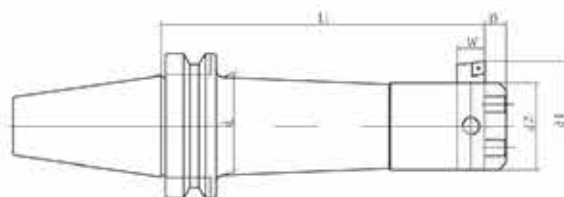
013 90° 粗镗刀柄
90° BSB BORING BAR
BT NO-BSB NO-L

特 性

- BT NO锥柄锥度执行AT3标准
- 镗通孔专用
- 适用于孔径凹凸不平，毛胚粗糙之加工物

Features

- BT NO taper shank is in conformity with AT3 standard;
- Special for boring blind hole;
- Suitable for uneven aperture and rough machining casting.



技术参数： TECHNICAL SPECIFICATIONS

规 格 MODEL NO	d1		d2	d3	L1	W
	最小加工孔Min	最大加工孔Max				
BT40-BS825-120	25	52	20	22	120	8
BT40-BSA38-150	38	70	30	33	150	10
BT40-BS850-165	50	90	34	44	165	13
BT40-BS862-180	62	115	50	56	180	16
BT40-BS890-180	90	150	75	62	180	19
BT50-BS825-135	25	52	20	22	135	8
BT50-BS838-180	38	70	30	32	180	10
BT50-BS850-180	50	90	40	44	180	13
BT50-BS850-240	50	90	40	44	240	13
BT50-BS862-195	62	115	50	56	195	16
BT50-BS862-270	62	115	50	56	270	16
BT50-BS872-195	72	135	60	66	195	19
BT50-BS872-285	72	135	60	66	285	19
BT50-BS890-210	90	150	75	80	210	19
BT50-BS890-300	90	150	75	80	300	19
BT50-BS8105-195	105	190	90	88	195	25
BT50-BS8105-285	105	190	90	94	285	25
BT50-BS8130-255	130	260	110	99	255	25

刀柄部分 TOOLHOLDER

非研刀部分
NON-STANDARD TOOL

铣刀部分
MILLING CUTTER

孔部分
H DRILLING

镗刀部分
BORING TOOL

刀柄部分
TOOLHOLDER

014

数控短锥钻夹头刀柄

NC SHORT TAPER DRILL CHUCK HOLDER

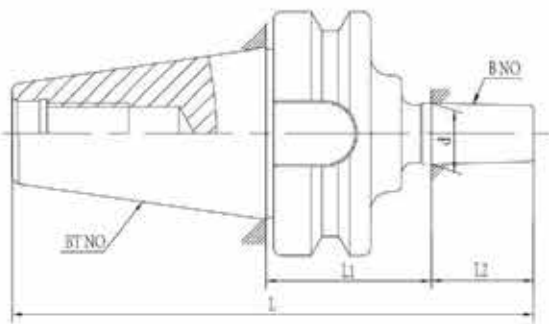
BT NO-B/J NO-L

特性

◎BT NO锥柄锥度执行AT3标准

Features

◎BT NO taper shank is in conformity with AT3 standard.



技术参数： TECHNICAL SPECIFICATIONS

规格 MODEL NO		L	L1	L2	d
BT30	-B16-45	117.4		24	15.733
	-B18-45	125.4	45	32	17.78
	-J6-45	118.8		25.4	17.17
BT40	-B16-32	121.4	32		
	-45	134.4	45		
	-75	164.4	75	24	15.733
	-90	179.4	90		
	-B18-45	142.4	45		
	-75	172.4	75	32	17.78
BT50	-J6-45	135.8	45	25.4	17.17
	-B16-45	170.8	45		15.733
	-60	185.8	60		
	-75	200.8	75	24	15.733
	-90	215.8	90		
	-B18-45	178.8	45	32	17.78
	-J6-45	172.2	45	25.4	17.17

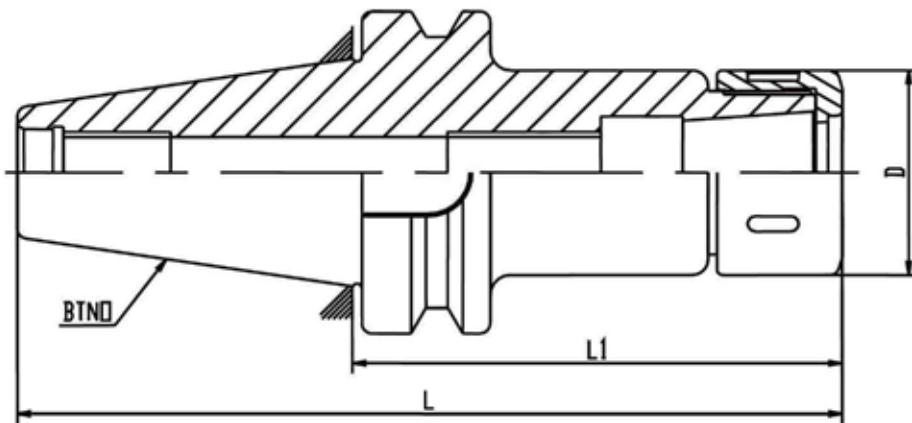
015 弹性筒夹刀柄
BT NO-SK NO-L

特性

- BT NO锥柄锥度执行AT3标准
- 内外锥同轴度0.005mm
- 预测动平衡设计

Features

- BT NO taper shank is in conformity with AT3 standard;
- Concentricity of the inner and outer cone: 0.005mm;
- Default balancing design.



刀柄部分 TOOLHOLDER

非研刀具部分
NON-STANDARD TOOL

铣刀部分
MILLING CUTTER

孔部分
H DRILLING

镗刀部分
BORING TOOL

刀柄部分
TOOLHOLDER

技术参数： TECHNICAL SPECIFICATIONS

规格 MODEL NO	夹持范围 CAPACITY	L	L1	D	筒夹COLLET PAGE83	螺母NUT PAGE86	扳手WRENCH PAGE87/89						
BT30	-SK06-60 -80	2-6	108.4	60	20	SK06	SK06	OW/SK06 or OB/SK06					
			128.4	80									
	-SK10-70 -95	2-10	118.4	70	27	SK10	SK10	OW/SK10 or OB/SK10					
			143.4	95									
	-SK16-60 -80 -100	3-16	108.4	60	40	SK16	SK16	A/38-42 or OB/SK16					
			128.4	80									
			148.4	100									
-SK25-80	6-25.4	128.4	80	54	SK25	SK25	A/45-52 or OB/SK25						
BT40	-SK06-65 -85	2-6	130.4	65	20	SK06	SK06	OW/SK06 or OB/SK06					
			150.4	85									
	-SK10-55 -80 -100 -150	2-10	120.4	55	27	SK10	SK10	OW/SK10 or OB/SK10					
			145.4	80									
			165.4	100									
			215.4	150									
	-SK16-55 -80 -100 -150 -SK25-70	3-16	120.4	55	40	SK16	SK16	A/38-42 or OB/SK16					
			145.4	80									
			165.4	100									
			215.4	150									
			135.4	70									
-95 -110	6-25.4	160.4	95	54	SK25	SK25	A/45-52 or OB/SK25						
		175.4	110										
		-SK06-70 -100	2-6					171.8	70	20	SK06	SK06	OW/SK06 or OB/SK06
								201.8	100				
BT50	-SK10-100 -130 -150	2-10	201.8	100	27	SK10	SK10	OW/SK10 or OB/SK10					
			231.8	130									
			251.8	150									
	-SK16-100 -130 -150	3-16	201.8	100	40	SK16	SK16	A/38-42 or OB/SK16					
			231.8	130									
			251.8	150									
	-SK25-100 -130 -150	6-25.4	201.8	100	54	SK25	SK25	A/45-52 or OB/SK25					
			231.8	130									
			251.8	150									

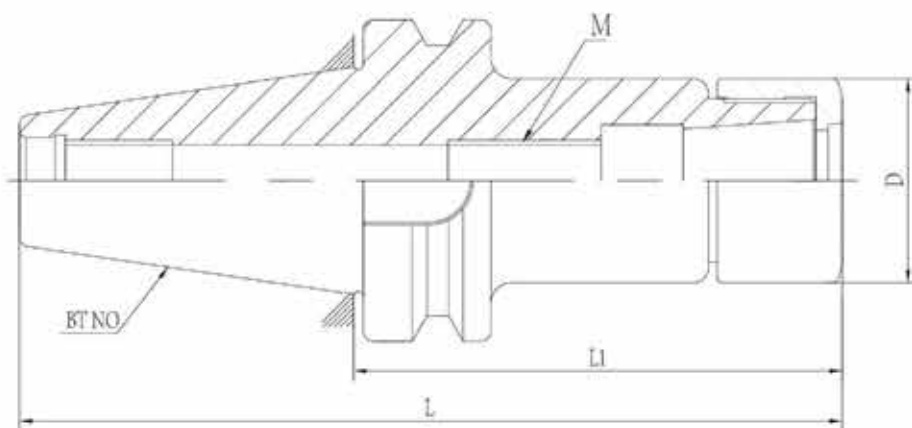
016 弹性筒夹刀柄
BT NO-GSK NO-L

特性

- BT NO锥柄锥度执行AT3标准
- 内外锥同轴度0.005mm
- 预测动平衡设计

Features

- BT NO taper shank is in conformity with AT3 standard;
- Concentricity of the inner and outer cone: 0.005mm;
- Default balancing design.



刀柄部分 TOOLHOLDER

非研刀具部分
NON-STANDARD TOOL

铣刀部分
MILLING CUTTER

孔钻部分
H. DRILLING

镗刀部分
BORING TOOL

刀柄部分
TOOLHOLDER

技术参数：TECHNICAL SPECIFICATIONS

规格 MODEL NO	夹持范围 CAPACITY	L	L1	D	筒夹COLLET PAGE 81	螺母NUT PAGE 81	扳手WRENCH PAGE 81		
BT30	-GSK06-60	2-6	108.4	60	20	SK06	GSK06	OB/SK06	
	-80		128.4	80					
	-GSK10-70	2-10	118.4	70	27	SK10	GSK10	OB/SK10	
			-95	143.4					95
	-GSK16-60	3-16	108.4	60	40	SK16	GSK16	OB/SK16	
			-80	128.4					80
			-100	148.4					100
-GSK25-80	6-25.4	128.4	80	54	SK25	GSK25	OB/SK25		
BT40	-GSK06-65	2-6	130.4	65	20	SK06	GSK06	OB/SK06	
			-85	150.4					85
	-GSK10-55	2-10	120.4	55	27	SK10	GSK10	OB/SK10	
			-80	145.4					80
			-100	165.4					100
			-150	215.4					150
	-GSK16-55	3-16	120.4	55	40	SK16	GSK16	OB/SK16	
			-80	145.4					80
			-100	165.4					100
			-150	215.4					150
	-GSK25-70	6-25.4	135.4	70	54	SK25	GSK25	OB/SK25	
-95			160.4	95					
-110			175.4	110					
BT50	-GSK06-70	2-6	171.8	70	20	SK06	GSK06	OB/SK06	
			-100	201.8					100
	-GSK10-100	2-10	201.8	100	27	SK10	GSK10	OB/SK10	
			-130	231.8					130
			-150	251.8					150
	-GSK16-100	3-16	201.8	100	40	SK16	GSK16	OB/SK16	
			-130	231.8					130
			-150	251.8					150
	-GSK25-100	6-25.4	201.8	100	54	SK25	GSK25	OB/SK25	
			-130	231.8					130
-150			251.8	150					

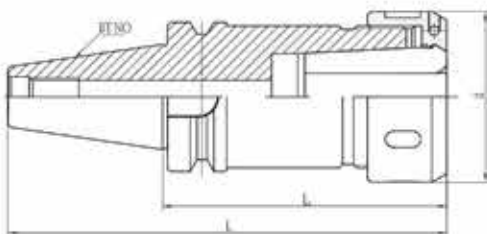
017 重切削刀柄
OZ COLLET CHUCK
 BT NO-OZ NO-L

特性

- BT NO锥柄锥度执行AT3标准
- 内外锥同轴度0.005mm

Features

- BT NO taper shank is in conformity with AT3 standard;
- Concentricity of the inner and outer cone: 0.005mm.



技术参数： TECHNICAL SPECIFICATIONS

规格 Model No.	L	L1	φ	扳手WRENCH PAGE90	螺帽NUT PAGE91	筒夹COLLET PAGE90
BT30	-OZ25-70	118.4	70			
BT40	-OZ25-70	135.4	70	OZ25-W	OZ25	OZ25A/B
	-100	165.4	100			
	-120	185.4	120			
	-OZ32-90	155.4	90			
BT50	-105	170.4	105	OZ32-W	OZ32	OZ32A/B
	-120	185.4	120			
	-OZ25-85	186.8	85			
BT50	-100	201.8	100	OZ25-W	OZ25	OZ25A/B
	-120	221.8	120			
	-OZ32-90	191.8	90			
	-105	206.8	105			
	-120	221.8	120	OZ32-W	OZ32	OZ32A/B

刀柄部分 TOOLHOLDER

非研刀具部分
NON-STANDARD TOOL

铣刀部分
MILLING CUTTER

孔部分
H DRILLING

镗刀部分
BORING TOOL

刀柄部分
TOOLHOLDER

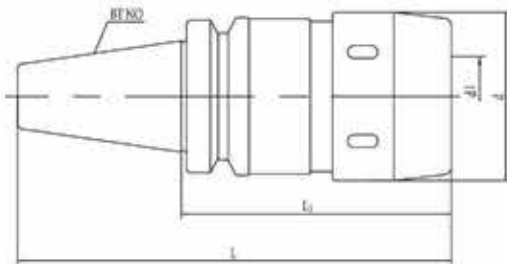
018 强力刀柄 MILLING CHUCK BT NO-C NO-L

特性

○BT NO锥柄锥度执行AT3标准

Features:

○BT NO taper shank is in conformity with AT3 standard.



技术参数： TECHNICAL SPECIFICATIONS

型号 Model No.		L	Li	d	di	筒夹 COLLET PAGE 91
BT40	-C25-105	164.4	105	58	25	C25
	-C32-105☆	164.4	105	68	32	C32
BT50	-C25-105	200.8	105	58	25	C25
	-C32-105☆	200.8	105	68	32	C32
	-C42-105	200.8	105	84	42	C42

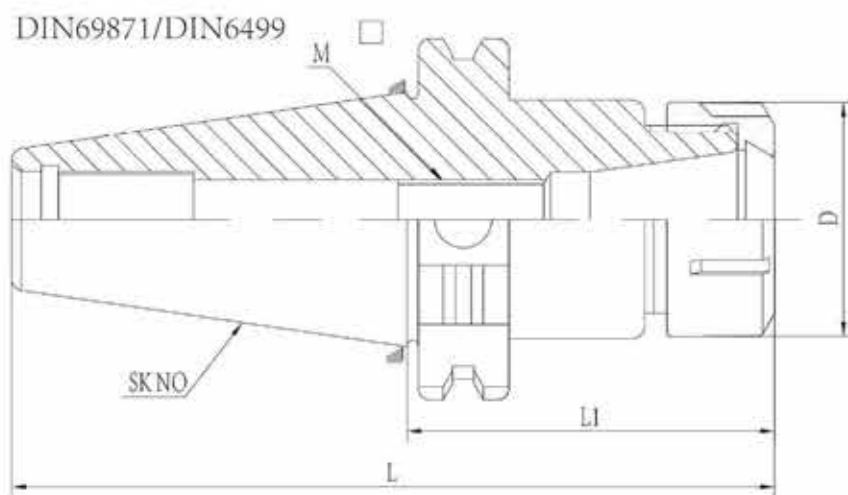
019 弹性筒夹刀柄
SK SHANK ER COLLET CHUCK
SK NO-ER NO-L

特性

- SK NO锥柄锥度执行AT3标准
- 内外锥同轴度0.005mm
- 预测动平衡设计

Features

- SK NO taper shank is in conformity with AT3 standard;
- Concentricity of the inner and outer cone: 0.005mm;
- Default balancing design.



刀柄部分 TOOLHOLDER

非研刀部分
NON-STANDARD TOOL

铣刀部分
MILLING CUTTER

孔部分
H DRILLING

镗刀部分
BORING TOOL

刀柄部分
TOOLHOLDER

技术参数：TECHNICAL SPECIFICATIONS

规格 MODEL NO		夹持范围 CAPACITY	L	L1	D	筒夹 COLLET PAGE 82	螺母 NUT PAGE 86	扳手 WRENCH PAGE 85
SK30	-ER11-60	0.5-7	107.8	60	19	ER11	ER11-A	OW/ER11
	-100		147.8	100	19			
	-ER16-60	1-10	107.8	60	28	ER16	ER16-A	OW/ER16
	-100		147.8	100	28			
	-ER20-60	2-13	107.8	60	34	ER20	ER20-A	OW/ER20
	-100		147.8	100	34			
	-ER25-60	2-16	107.8	60	42	ER25	ER25-UM	UM/ER25
	-100		147.8	100	42			
-ER32-60	3-20	107.8	60	50	ER32	ER32-UM	UM/ER32	
-100		147.8	100	50				
SK40	-ER11-70	0.5-7	138.4	70	19	ER11	ER11-A	OW/ER11
	-100		168.4	100	19			
	-ER16-70	1-10	138.4	70	28	ER16	ER16-A	OW/ER16
	-100		168.4	100	28			
	-150		218.4	150	28			
	-ER20-70	2-13	138.4	70	34	ER20	ER20-A	OW/ER20
	-100		168.4	100	34			
	-150		218.4	150	34			
	-ER25-70	2-16	138.4	70	42	ER25	ER25-UM	UM/ER25
	-100		168.4	100	42			
	-150		218.4	150	42			
	-ER32-70	3-20	138.4	70	50	ER32	ER32-UM	UM/ER32
	-100		168.4	100	50			
	-150		218.4	150	50			
	-ER40-80	3-26	148.4	80	63	ER40	ER40-UM	UM/ER40
	-100		168.4	100	63			
-150	218.4		150	63				
SK50	-ER16-70	1-10	171.8	70	28	ER16	ER16-A	OW/ER16
	-100		201.8	100	28			
	-150		251.8	150	28			
	-ER20-70	2-13	171.8	70	34	ER20	ER20-A	OW/ER20
	-100		201.8	100	34			
	-150		251.8	150	34			
	-ER25-70	2-16	171.8	70	42	ER25	ER25-UM	UM/ER25
	-100		201.8	100	42			
	-150		251.8	150	42			
	-ER32-70	3-20	171.8	70	50	ER32	ER32-UM	UM/ER32
	-100		201.8	100	50			
	-150		251.8	150	50			
	-ER40-80	3-26	171.8	80	63	ER40	ER40-UM	UM/ER40
	-100		201.8	100	63			
-150	251.8		150	63				
-200	301.8		200	63				

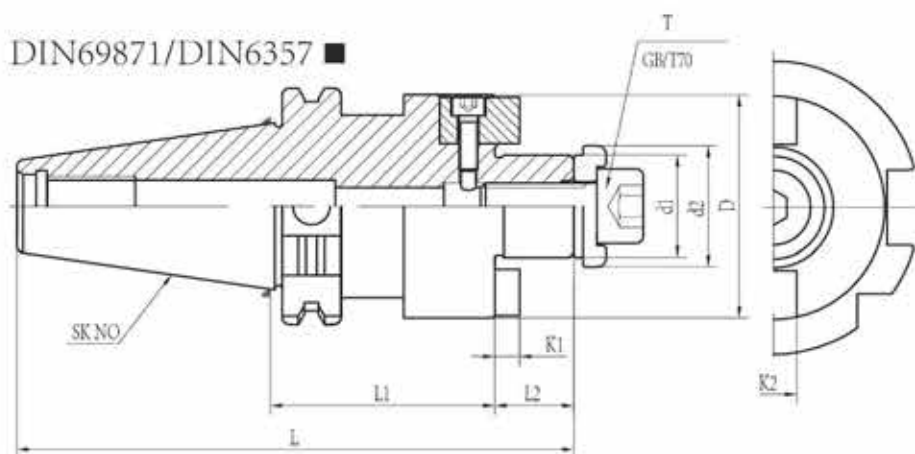
020 面铣刀柄
SK SHANK FACE MILL HOLDER
SK NO-FMB NO-L

特性

- SK NO锥柄锥度执行AT3标准
- 配合直台公差h6

Features

- SK NO taper shank is in conformity with AT3 standard;
- Fitting tolerance h6 for straight sets.



刀柄部分 TOOLHOLDER

非标准刀具部分
NON-STANDARD TOOL

铣刀部分
MILLING CUTTER

孔钻部分
HOLE DRILLING

镗刀部分
BORING TOOL

刀柄部分
TOOLHOLDER

技术参数： TECHNICAL SPECIFICATIONS

型 号 MODEL NO	d1	d2	D	L	L1	L2	K1	K2	T	
SK30	-FMB22-45☆ -60☆	22	26	45	109.3	45	16.5	4.8	10	M10×30
					124.3	60				
	-FMB27-45☆ -60☆	27	33	54	111.3	45	18.5	5.8	12	M12×30
					126.3	60				
-FMB32-60☆	32	41	58	130.3	60	22	6.8	14	M16×35	
SK40	-FMB22-45☆ -60 -100☆ -150	22	26	48	129.9	45	16.5	4.8	10	M10×30
					144.9	60				
					184.9	100				
					234.9	150				
	-FMB27-45☆ -60 -100☆ -150	27	33	60	131.9	45	18.5	5.8	12	M12×30
					146.9	60				
					186.9	100				
					236.9	150				
	-FMB32-60☆ -100☆ -150 -200	32	41	62	150.4	60	22	6.8	14	M16×35
					190.4	100				
					240.4	150				
					290.4	200				
	-FMB40-60☆ -100☆ -150 -200	40	48	80	153.4	60	25	8	16	M16×35
					193.4	100				
					243.4	150				
					293.4	200				
SK50	-FMB22-60 -100☆ -150 -200	22	26	48	178.25	60	16.5	4.8	10	M10×30
					218.25	100				
					268.25	150				
					318.25	200				
	-FMB27-60 -100☆ -150 -200	27	33	60	180.25	60	18.5	5.8	12	M12×30
					220.25	100				
					270.25	150				
					320.25	200				
	-FMB32-60 -100☆ -150 -200	32	41	73	183.75	60	22	6.8	14	M16×35
					223.75	100				
					273.75	150				
					333.75	200				
	-FMB40-60 -100☆ -150 -200	40	48	80	186.75	60	25	8	16	M16×35
					226.75	100				
					276.75	150				
					326.75	200				

注：1. 带☆为常备库存，不带☆按订单生产
2. 如需订中心出水或法兰盘出水请表明

Note: 1. Product with ☆ mark is for running stock and product without ☆ can accept order production.
2. When order center cooling or flange cooling, please specify.

021 侧固式刀柄
SK SHANK SLN SIDE LOCK END MILL HOLDER
 SK NO-SLN NO-L

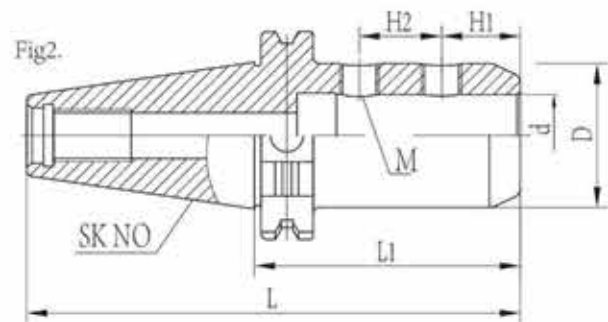
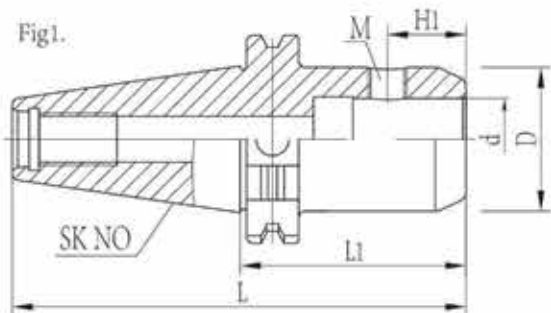
特性

- SK NO锥柄锥度执行AT3标准
- 内孔d公差H5
- 预测动平衡设计

Features

- SK NO taper shank is in conformity with AT3 standard;
- Tolerance H5 for inner bore d;
- Default balancing design.

DIN 69871/DIN1835



刀柄部分 TOOLHOLDER

非标准刀具部分
NON-STANDARD TOOL

铣刀部分
MILLING CUTTER

铰刀部分
FL DRILLING

镗刀部分
BORING TOOL

刀柄部分
TOOLHOLDER

技术参数：TECHNICAL SPECIFICATIONS

规格 MODEL NO.	L	L1	H1	H2	M	D	d	型式 Type	
SK30	97.8	50	18		M6	25	6	Fig1	
			20		M8	28	8	Fig1	
			22.5		M10	35	10	Fig1	
			24		M12	42	12	Fig1	
	110.8	63	25		M14	48	16	Fig1	
			25		M16	52	20	Fig1	
SK40	118.4	50	18		M6	25	6	Fig1	
			20		M8	28	8	Fig1	
			22.5		M10	35	10	Fig1	
			24		M12	42	12	Fig1	
	131.4	63	24		M14	48	16	Fig1	
			25		M16	52	20	Fig1	
	168.4	100	24		25	M18	65	25	Fig2
			24		28	M20	72	32	Fig2
SK50	164.75	63	18		M6	25	6	Fig1	
			20		M8	28	8	Fig1	
			22.5		M10	35	10	Fig1	
			24		M12	42	12	Fig1	
			25		M14	48	16	Fig1	
			25		M16	52	20	Fig1	
	181.75	80	24		25	M18	65	25	Fig2
			24		28	M20	72	32	Fig2
	201.75	100	30		32	M20	90	40	Fig2
			30		32	M20	100	42	Fig2

注：1.带☆为常备库存，不带☆按订单生产
2.可做动平衡G6.3/12000rpm，另外加价

Note: 1. Product with ☆ mark is for running stock and product without ☆ can accept order production.
2. We can provide dynamic balance G6.3/12000rpm. Price would be advanced.

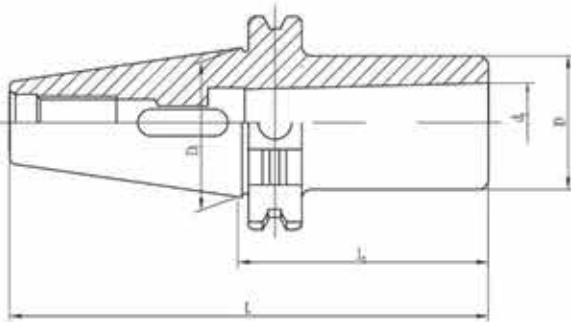
022 数控变径套 (扁尾型)
SK SHANK NC MORSE TAPER HOLDER (A TYPE)
 SK NO-MTA NO-L

特性

- SK NO锥柄锥度执行AT3标准
- 内外锥同轴度0.005mm

Features

- SK NO taper shank is in conformity with AT3 standard;
- Concentricity of the inner and outer cone: 0.005mm



技术参数： TECHNICAL SPECIFICATIONS

规格 MODEL NO		L	L1	D1	d1	D
SK30	-MTA1-50	97.8	50	31.75	12.065	25
	-MTA2-60	117.8	60		17.78	32
	-MTA3-75	122.8	75		23.825	40
SK40	-MTA1-50	118.4	50	44.45	12.065	25
	-MTA2-50	118.4	50		17.78	32
	-MTA3-70	138.4	70		23.825	40
	-MTA4-95	163.4	95		31.267	48
SK50	-MTA1-45	146.75	45	69.85	12.065	25
	-MTA2-60	161.75	60		17.78	32
	-MTA3-65	166.75	65		23.825	40
	-MTA4-95	196.75	95		31.267	48
	-MTA5-105	206.75	105		44.399	63

刀柄部分 TOOLHOLDER

非研刀部分
NON-STANDARD TOOL

铣刀部分
MILLING CUTTER

孔钻部分
IF DRILLING

镗刀部分
BORING TOOL

刀柄部分
TOOLHOLDER

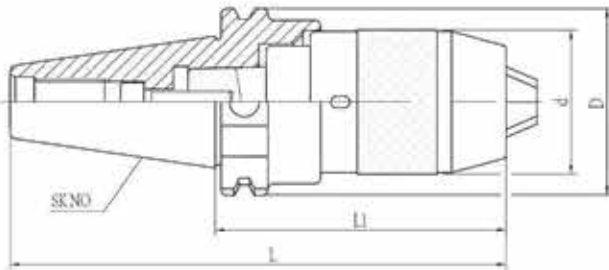
023 直接式钻夹头刀柄 SK SHANK APU DRILL CHUCK HOLDER SK NO-APU NO-L

特性

○SK NO锥柄锥度执行AT3标准

Features

○SK NO taper shank is in conformity with AT3 standard.



技术参数：TECHNICAL SPECIFICATIONS

规格 MODEL NO	L	L1	d	D
SK30	-APU08-80	127.8	80	50
	-APU13-100	167.8	100	
	-APU16-115	182.8	115	
SK40	-APU08-85	153.4	85	63.55
	-APU13-105	173.4	105	
	-APU16-120	188.4	120	
SK50	-APU08-95	196.75	95	97.5
	-APU13-120	221.75	120	
	-APU16-130	231.75	130	

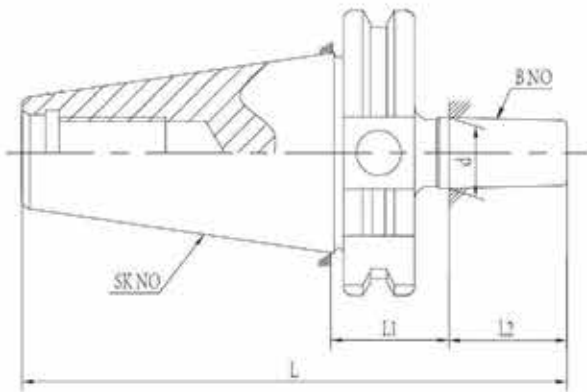
024 数控短锥钻夹头刀柄
SK SHANK NC SHORT TAPER DRILL CHUCK HOLDER
 SK NO-B/J NO-L

特性

SK NO锥柄锥度执行AT3标准

Features

SK NO taper shank is in conformity with AT3 standard.



技术参数： TECHNICAL SPECIFICATIONS

规格 MODEL NO	L	L1	L2	d	
SK40	-B16-26	118.4	26	15.733	
	-32	124.4	32		
	-45	137.4	45		
	-B18-32	132.4	32	17.78	
	-45	145.4	45		
	-J6-32	125.8	32		
SK50	-B16-45	170.8	45	24	15.733
	-B18-45	178.8		32	17.78
	-J6-45	172.1		25.4	17.17

刀柄部分 TOOLHOLDER

非标准刀具部分
NON-STANDARD TOOL

铣刀部分
MILLING CUTTER

孔部分
H DRILLING

镗刀部分
BORING TOOL

刀柄部分
TOOLHOLDER

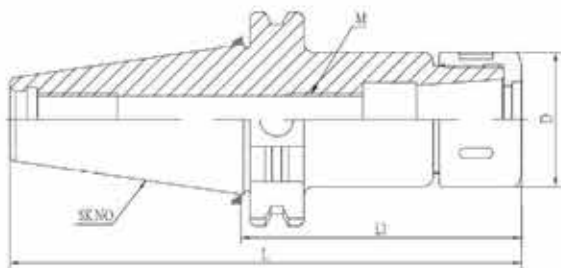
025 弹性筒夹刀柄 SK SHANK SK COLLET CHUCK SK NO-SK NO-L

特性

- SK NO锥柄锥度执行AT3标准
- 内外锥同轴度0.005mm
- 预测动平衡设计

Features

- SK NO taper shank is in conformity with AT3 standard;
- Concentricity of the inner and outer cone: 0.005mm;
- Default balancing design.



技术参数：TECHNICAL SPECIFICATIONS

规格 MODEL NO	夹持范围 Capacity	L	L1	D	筒夹COLLET Page83	螺母NUT Page88	扳手WRENCH Page87/89	
SK30	-SK06-55	2-6	102.8	55	20	SK06	SK06	OW/SK06 or OB/SK06
	-SK10-70	2-10	117.8	70	27	SK10	SK10	OW/SK10 or OB/SK10
	-95		142.8	95				
	-SK16-85	3-16	132.8	85	40	SK16	SK16	A/38-42 or OB/SK16
	-100		147.8	100				
-SK25-85	6-25.4	132.8	85	54	SK25	SK25	A/45-52 or OB/SK25	
SK40	-SK6-70	2-6	138.4	70	20	SK06	SK06	OW/SK06 or OB/SK06
	-100		168.4	100				
	-SK10-80	2-10	148.4	80	27	SK10	SK10	OW/SK10 or OB/SK10
	-100		168.4	100				
	-SK16-80	3-16	148.4	80	40	SK16	SK16	A/38-42 or OB/SK16
	-100		168.4	100				
-SK25-95	6-25.4	163.4	95	54	SK25	SK25	A/45-52 or OB/SK25	
-110		178.4	110					
SK50	-SK6-80	2-6	181.75	80	20	SK06	SK06	OW/SK06 or OB/SK06
	-SK10-100		201.75	100				
	-SK10-130	2-10	231.75	130	27	SK10	SK10	OW/SK10 or OB/SK10
	-SK16-100		201.75	100				
	-130	3-16	231.75	130	40	SK16	SK16	A/38-42 or OB/SK16
	-150		251.75	150				
	-SK25-100	6-25.4	201.75	100	54	SK25	SK25	A/45-52 or OB/SK25
	-130		231.75	130				
-150	251.75		150					

注: 1. 可做动平衡G6.3/12000rpm, 另外加价
2. M处刀具定长结构可按客户要求订做

Note: 1. We can provide dynamic balance G6.3/12000rpm. Price would be advanced.
2. Fixed-length structure of M can be customized.

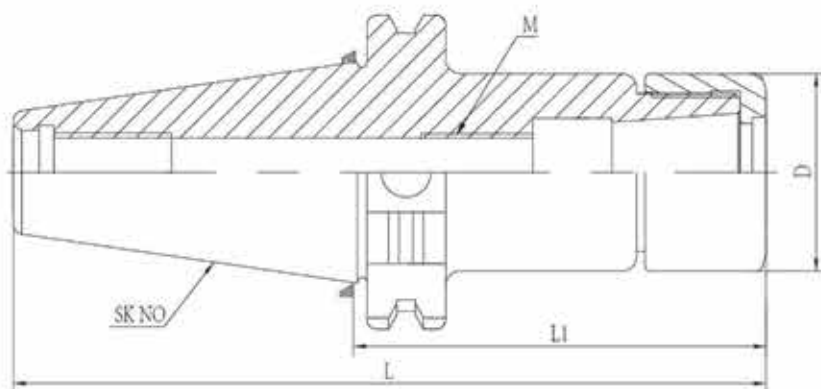
026 弹性筒夹刀柄
SK SHANK GSK COLLET CHUCK
SK NO-GSK NO-L

特性

- SK NO锥柄锥度执行AT3标准。
- 内外锥同轴度0.005mm。
- 动平衡G6.3/12000、G2.5/20000。

Features

- SK NO taper shank is in conformity with AT3 standard;
- Concentricity of the inner and outer cone: 0.005mm;
- Dynamic balance: G6.3/12000 and G2.5/20000rpm



刀柄部分 TOOLHOLDER

非研刀具部分
NON-STANDARD TOOL

铣刀部分
MILLING CUTTER

孔部分
H DRILLING

镗刀部分
BORING TOOL

刀柄部分
TOOLHOLDER

技术参数：TECHNICAL SPECIFICATIONS

规格 MODEL NO	夹持范围 CAPACITY	L	L1	D	筒夹COLLET PAGE 83	螺母NUT PAGE 89	扳手WRENCH PAGE 89	
SK30	-GSK06-55	2-6	102.8	55	20	SK06	GSK06	OB/SK06
	-GSK10-70	2-10	117.8	70	27	SK10	GSK10	OB/SK10
	-95		142.8	95				
	-GSK16-85	3-16	132.8	85	40	SK16	GSK16	OB/SK16
	-100		147.8	100				
	-GSK25-85	6-25.4	132.8	85	54	SK25	GSK25	OB/SK25
SK40	-GSK6-70	2-6	138.4	70	20	SK06	GSK06	OB/SK06
	-100		168.4	100				
	-GSK10-80	2-10	148.4	80	27	SK10	GSK10	OB/SK10
	-100		168.4	100				
	-GSK16-80	3-16	148.4	80	40	SK16	GSK16	OB/SK16
	-100		168.4	100				
	-GSK25-95	6-25.4	163.4	95	54	SK25	GSK25	OB/SK25
	-110		178.4	110				
SK50	-GSK6-80	2-6	181.75	80	20	SK06	GSK06	OB/SK06
	-GSK10-100	2-10	201.75	100	27	SK10	GSK10	OB/SK10
	-GSK10-130		231.75	130				
	-GSK16-100	3-16	201.75	100	40	SK16	GSK16	OB/SK16
	-130		231.75	130				
	-150		251.75	150				
	-GSK25-100	6-25.4	201.75	100	54	SK25	GSK25	OB/SK25
	-130		231.75	130				
	-150		251.75	150				

注: 1. 可做动平衡G6.3/12000rpm, 另外加价
2. M处刀身定长结构可按客户要求订做

Note: 1. We can provide dynamic balance G6.3/12000rpm. Price would be advanced.
2. Fixed-length structure of M can be customized.

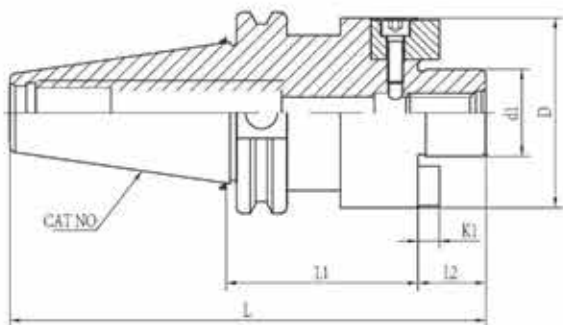
027 面铣刀柄
CAT SHANK FMA FACE MILL HOLDER
 CAT NO-FMA NO-L

特性

- CAT NO锥柄锥度执行AT3标准
- 配合直台公差h6

Features

- CAT NO taper shank is in conformity with AT3 standard;
- Fitting tolerance h6 for straight sets.



技术参数： TECHNICAL SPECIFICATIONS

规格 MODEL NO		d1	Ø	L	L1	L2	K1
CAT40	-FMA3/4°-1.5°	0.75	1.75	4.744	1.5		0.188
	-FMA1°-2.06°	1	1.969	5.434	2.06	0.687	0.188
	-FMA1-1/4°-2.21°	1.25	2.362	5.584	2.21		0.25
	-FMA1-1/2°-2.21°	1.5	2.953	5.835	2.21	0.938	0.349
CAT50	-FMA3/4°-1.50°	0.75	1.766	6.187	1.50		0.188
	-FMA1°-2.00°	1	1.969	6.687	2.00	0.687	0.188
	-FMA1-1/4°-1.5°	1.25	1.75	6.187	1.50		0.25
	-FMA1-1/2°-2.40°	1.5	2.953	7.338	2.40	0.938	0.349

刀柄部分 TOOLHOLDER

非研刀具部分
NON-STANDARD TOOL

铣刀部分
MILLING CUTTER

孔部分
H DRILLING

镗刀部分
BORING TOOL

刀柄部分
TOOLHOLDER

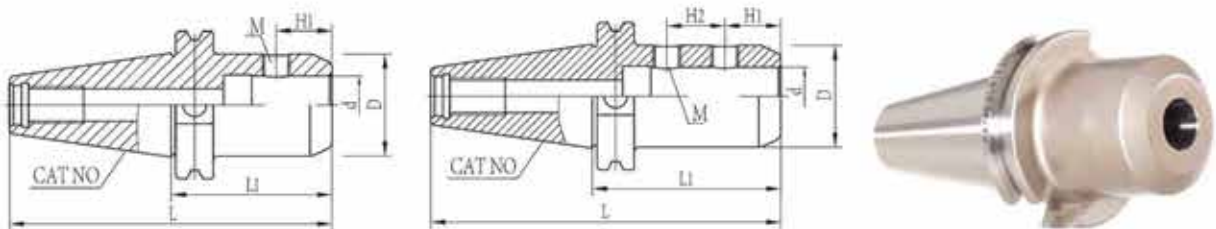
028 侧固式刀柄 CAT SHANK SLN SIDE LOCK END MILL HOLDER CAT NO-SLN NO-L

特性

- CAT NO锥柄锥度执行AT3标准
- 内孔公差H5
- 预测动平衡设计

Features

- CAT NO taper shank is in conformity with AT3 standard;
- Tolerance H5 for inner bore;
- Default balancing design.



技术参数： TECHNICAL SPECIFICATIONS

规格 MODEL NO.		L	L1	H1	H2	M	D	型式 Type	
CAT40	-SLN1/4"-3.00°	5.687	3.	0.63	0.875	1/4-28	0.984	Fig1	
	-SLN5/16"-3.00°			0.63		5/16-24		Fig1	
	-SLN3/8"-3.00°			0.781		3/8-24		1.25	Fig1
	-SLN1/2"-3.00°			0.875		7/16-20		1.25	Fig1
	-SLN5/8"-3.00°	6.187	3.5	0.937	0.875	1/2-20	1.75	Fig1	
	-SLN3/4"-3.50°			1		5/8-18		Fig1	
	-SLN7/8"-3.50°			1.063		5/8-10		2.047	Fig2
	-SLN1"-4.00°	6.687	4.	1.125	1.	3/4-16	2.484	Fig2	
-SLN1-1/4"-4.60°	7.287	4.6	3/4-16	2.75		Fig2			
-SLN1/4"-4.00°	8.	4.	0.63	1/4-28		0.984		Fig2	
-SLN5/16"-4.00°	8.	4.	0.63	5/16-24	Fig2				
-SLN3/8"-4.00°	8.	4.	0.781	1.656	3/8-24	1.25	Fig2		
-SLN1/2"-4.00°			0.875		7/16-20		1.25	Fig2	
-SLN5/8"-4.00°			8.	4.	0.937	0.875	1/2-20	1.75	Fig2
-SLN3/4"-4.00°			1	5/8-18	Fig2				
-SLN7/8"-4.00°	8.	4.	1.063	0.442	5/8-18	2.047	Fig2		
-SLN1"-4.00°			1.125		1.		3/4-16	2.484	Fig2
-SLN1-1/4"-4.60°								2.75	Fig2
-SLN1-1/2"-4.60°	8.6	4.6	1.125	1.	3/4-16	3.14	Fig2		
-SLN2"-6.00°						10.	6.	1.188	2.438

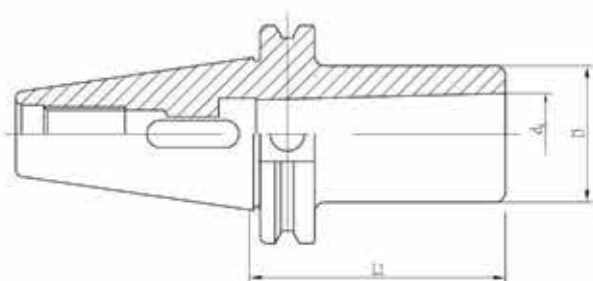
029 数控变径套 (扁尾型)
CAT SHANK NC MORSE TAPER HOLDER (A TYPE)
 CAT NO-MTA NO-L

特性

- CAT NO锥柄锥度执行AT3标准
- 内外锥同轴度0.005mm

Features

- CAT NO taper shank is in conformity with AT3 standard;
- Concentricity of the inner and outer cone: 0.005mm



技术参数： TECHNICAL SPECIFICATIONS

规格 MODEL NO		L1	d1	D
CAT40	-MTA1-1.75"	1.75"	0.475"	1"
	-MTA2-2.44"	2.44"	0.7"	1.25"
	-MTA3-3.00"	3.00"	0.938"	1.55"
	-MTA4-3.75"	3.75"	1.23"	1.75"
CAT50	-MTA1-1.50"	1.50"	0.475"	1"
	-MTA2-2.00"	2.00"	0.7"	1.25"
	-MTA3-2.50"	2.50"	0.938"	1.55"
	-MTA4-3.38"	3.38"	1.23"	1.75"
	-MTA5-3.75"	3.75"	1.748"	2.48"

刀柄部分 TOOLHOLDER

非研刀具部分
NON-STANDARD TOOL

铣刀部分
MILLING CUTTER

铰刀部分
REDRILLING

镗刀部分
BORING TOOL

刀柄部分
TOOLHOLDER

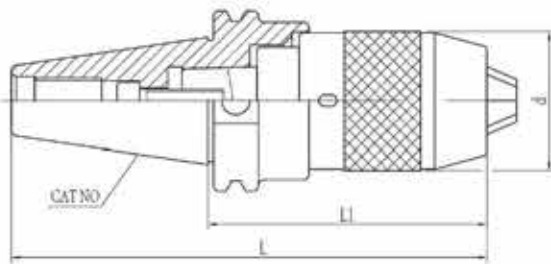
030 直接式钻夹头刀柄 CAT SHANK APU DRILL CHUCK HOLDER CAT NO-APU NO-L

特性

○CAT NO锥柄锥度执行AT3标准

Features

○CAT NO taper shank is in conformity with AT3 standard.



技术参数： TECHNICAL SPECIFICATIONS

规格 MODEL NO		L	L1	α
CAT40	-APU40/127°-2.76°	5.45	2.76	1.46
	-APU65/127°-3.54°	6.23	3.54	1.93
	-APU80/127°-4.33°	7.02	4.33	2.13
CAT50	-APU40/127°-2.95°	6.95	2.95	1.46
	-APU65/127°-3.74°	7.74	3.74	1.93
	-APU80/127°-4.13°	8.13	4.13	2.13

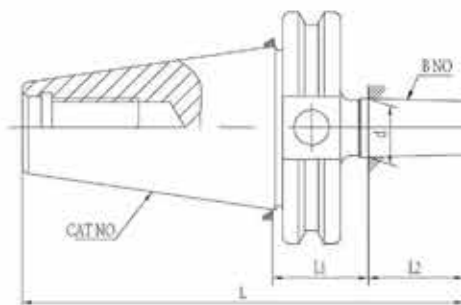
031 数控短锥钻夹头刀柄
CAT SHANK NC SHORT TAPER DRILL CHUCK HOLDER
 CAT NO-B/S NO-L

特性

◎CAT NO锥柄锥度执行AT3标准

Features

◎CAT NO taper shank is in conformity with AT3 standard.



技术参数： TECHNICAL SPECIFICATIONS

规格 MODEL NO	L	L1	L2	d	
CAT40	-B16-45	137.25	45	24	15.733
	-B18-45	145.25	45	32	17.78
	-J6-45	138.65	45	25.4	17.17
CAT50	-B16-60	185.6	60	24	15.733
	-B18-60	193.6	60	32	17.78
	-J6-45	172	45	25.4	17.17

刀柄部分 TOOLHOLDER

非研刀部分
NON-STANDARD TOOL

铣刀部分
MILLING CUTTER

孔部分
H DRILLING

镗刀部分
BORING TOOL

刀柄部分
TOOLHOLDER

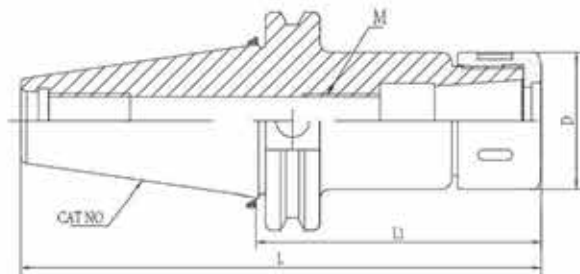
032 弹性筒夹刀柄 CAT SHANK SK COLLET CHUCK CAT NO-SK NO-L

特性

- CAT NO锥柄锥度执行AT3标准
- 内外锥同轴度0.005mm
- 预测动平衡设

Features

- CAT NO taper shank is in conformity with AT3 standard;
- Concentricity of the inner and outer cone: 0.005mm;
- Default balancing design.



规格 MODEL NO	夹持范围 CAPACITY	L	L1	D	筒夹COLLET PAGE51	螺帽NUT PAGE58	扳手WRENCH PAGE57/59	
CAT40	-SK10-3.15° -4.00°	2-10	5.787" 6.637"	3.15" 4.00"	27	SK10	ASK10	OW/SK10 or OB/SK10
	-SK16-3.15° -4.00°	3-16	5.787" 6.637"	3.15" 4.00"	40	SK16	ASK16	A/38-42 or OB/SK16
	-SK25-4.00°	6-25.4	6.637"	4.00"	54	SK25	ASK25	A/45-52 or OB/SK25
CAT50	-SK10-4.00° -6.00°	2-10	8.00" 10.00"	4.00" 6.00"	27	SK10	ASK10	OW/SK10 or OB/SK10
	-SK16-4.00° -6.00°	3-16	8.00" 10.00"	4.00" 6.00"	40	SK16	ASK16	A/38-42 or OB/SK16
	-SK25-4.00° -6.00°	6-25.4	8.00" 10.00"	4.00" 6.00"	54	SK25	ASK25	A/45-52 or OB/SK25

注：1.可做动平衡G6.3/12000rpm，另外加价
2.M处刀具定长结构可按客户要求订做

Note: 1. We can provide dynamic balance G6.3/12000rpm. Price would be advanced.
2. Fixed-length structure of M can be customized.

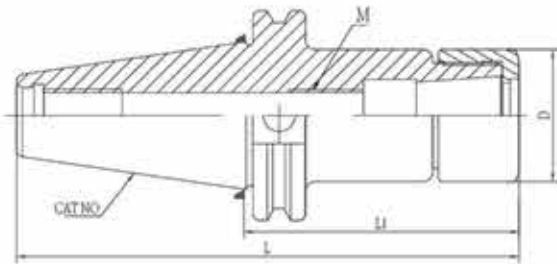
033 弹性筒夹刀柄 CAT SHANK GSK COLLET CHUCK CAT NO-GSK NO-L

特性

- CAT NO锥柄锥度执行AT3标准
- 内外锥同轴度0.005mm
- 动平衡G6.3/12000

Features

- CAT NO taper shank is in conformity with AT3 standard;
- Concentricity of the inner and outer cone: 0.005mm;
- Dynamic balancing: G6.3/12000rpm



技术参数： TECHNICAL SPECIFICATIONS

规格 MODEL NO	支持范围 CAPACITY	L	L1	D	筒夹COLLET PAGE83	螺帽NUT PAGE89	扳手WRENCH PAGE89
CAT40	-GSK10-3.15°	2-10	5.787"	3.15°	27	SK10	GSK10
	-4.00°		6.637"	4.00°			
	-GSK16-3.15°	3-16	5.787"	3.15°			
	-4.00°		6.637"	4.00°			
CAT50	-GSK25-4.00°	6-25.4	6.637"	4.00°	54	SK25	GSK25
	-GSK10-4.00°		2-10	8.00"			
	-GSK16-4.00°	3-16		8.00"			
	-6.00°		10.00"	6.00°			
	-GSK25-4.00°	6-25.4		8.00"			
	-6.00°		10.00"	6.00°			

注：1.可做动平衡G2.5/20000rpm，另外加价
2.M处刀具定长结构可按客户要求订做

Note: 1. We can provide dynamic balance G2.5/20000rpm. Price would be advanced.
2. Fixed-length structure of M can be customized.

刀柄部分 TOOLHOLDER

非标准刀具部分
NON-STANDARD TOOL

铣刀部分
MILLING CUTTER

孔部分
DRILLING

镗刀部分
BORING TOOL

刀柄部分
TOOLHOLDER

034 弹性筒夹刀柄 CAT SHANK ER COLLET CHUCK CAT NO-ER NO-L

特性

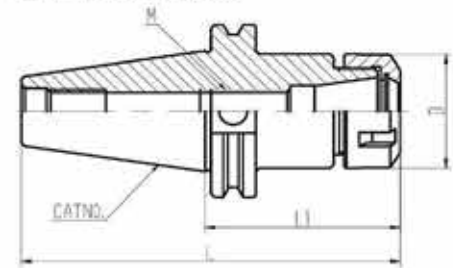
- CAT NO锥柄锥度执行AT3标准
- 内外锥同轴度0.005mm
- 预测动平衡设计

Features

- CAT NO taper shank is in conformity with AT3 standard;
- Concentricity of the inner and outer cone: 0.005mm;
- Default balancing design.



ASME B5.50/DIN6499



技术参数： TECHNICAL SPECIFICATIONS

规格 MODEL NO	支持范围 Capacity	L	L1	D	筒夹COLLET page82	螺母NUT page86	扳手WRENCH page85	
CAT40	-ER16-2.5" -4" -6"	4.375"	2.5"	28	ER16	ER16-A	OW/ER16	
		5.875"	4"	28				
		7.875"	6"	28				
	-ER20-2.5" -4" -6"	2-13	4.375"	2.5"	34	ER20	ER20-A	OW/ER20
			5.875"	4"	34			
			7.875"	6"	34			
	-ER25-2.5" -4" -6"	2-16	4.375"	2.5"	42	ER25	ER25-UM	UM/ER25
			5.875"	4"	42			
			7.875"	6"	42			
-ER32-2.5" -4" -6"	3-20	4.375"	2.5"	50	ER32	ER32-UM	UM/ER32	
		5.875"	4"	50				
		7.875"	6"	50				
-ER40-2.5" -4" -6"	3-26	4.375"	2.5"	63	ER40	ER40-UM	UM/ER40	
		5.875"	4"	63				
		7.875"	6"	63				
CAT50	-ER16-4" -6" -8"	8"	4"	28	ER16	ER16-A	OW/ER16	
		10"	6"	28				
		12"	8"	28				
	-ER20-4" -6" -8"	2-13	8"	4"	34	ER20	ER20-A	OW/ER20
			10"	6"	34			
			12"	8"	34			
	-ER25-4" -6" -8"	2-16	8"	4"	42	ER25	ER25-UM	UM/ER25
			10"	6"	42			
			12"	8"	42			
	-ER32-4" -6" -8"	3-20	8"	4"	50	ER32	ER32-UMs	UM/ER32
			10"	6"	50			
			12"	8"	50			
	-ER40-4" -6" -8" -10"	3-26	8"	4"	63	ER40	ER40-UM	UM/ER40
			10"	6"	63			
			12"	8"	63			

注: 1. 可做动平衡G6.3/12000、G2.5/20000rpm, 另外加价
2. M处刀具加长结构可按客户要求订做

Note: 1. We can provide dynamic balance G6.3/12000、G2.5/20000rpm, Price would be advanced.

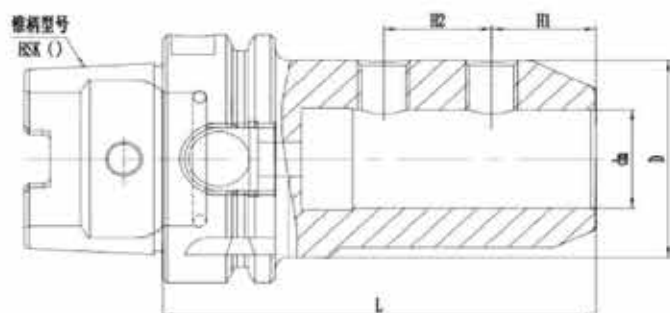
035 侧固式刀柄
HSK SHANK SLN SIDE LOCK END MILL HOLDER
HSK NO-SLN NO-L

特性

- HSK NO 锥柄执行 DIN69893 标准
- 内孔精度 H5
- 已设动平衡 G2.5/20000

Features

- HSK NO taper shank is in conformity with DIN69893 standard
- Inner bore d precision : H5
- Dynamic balancing: G2.5/20000rpm



型 号 MODEL NO		尺寸(mm)				
		dm	D	L	H1	H2
HSK32A	-SLN06-60	6	25	60	12	10
	-SLN08-60	8	28	60	14	12
HSK40A	-SLN06-60	6	25	60	12	10
	-SLN08-60	8	28	60	14	12
	-SLN10-60	10	35	60	15	14
	-SLN12-70	12	42	70	20	18
	-SLN16-75	16	48	75	22	18

刀柄部分 TOOLHOLDER

非研刀具部分
NON-STANDARD TOOL

铣刀部分
MILLING CUTTER

UG部分
U DRILLING

镗刀部分
BORING TOOL

刀柄部分
TOOLHOLDER

型 号 MODEL NO		尺寸(mm)				
		dm	D	L	H1	H2
HSK50A	-SLN06-65	6	25	65	12	10
	-SLN08-65	8	28	65	14	12
	-SLN10-65	10	35	65	15	14
	-SLN12-80	12	42	80	20	16
	-SLN16-80	16	48	80	22	18
	-SLN20-80	20	50	80	25	20
HSK63A	-SLN06-65	6	25	65	12	10
	-120	6	25	120	12	10
	-160	6	25	160	12	10
	-SLN08-65	8	28	65	14	12
	-120	8	28	120	14	12
	-160	8	28	160	14	12
	-SLN10-65	10	35	65	15	14
	-120	10	35	120	15	14
	-160	10	35	160	15	14
	-SLN12-80	12	42	80	20	16
	-120	12	42	120	20	16
	-160	12	42	160	20	16
	-SLN16-80	16	48	80	22	18
	-120	16	48	120	22	18
	-160	16	48	160	22	18
	-SLN20-80	20	52	80	25	20
	-120	20	52	120	25	20
	-160	20	52	160	25	20
	-SLN25-110	25	65	110	24	25
	-160	25	65	160	24	25
	-SLN32-110	32	72	110	24	28
	-160	32	72	160	24	28

型 号 MODEL NO		尺寸(mm)				
		d _m	D	L	H1	H2
HSK80A	-SLN06-80	6	25	80	12	10
	-120	6	25	120	12	10
	-160	6	25	160	12	10
	-SLN08-80	8	28	80	14	12
	-120	8	28	120	14	12
	-160	8	28	160	14	12
	-SLN10-80	10	35	80	15	14
	-120	10	35	120	15	14
	-160	10	35	160	15	14
	-SLN12-80	12	42	80	20	16
	-120	12	42	120	20	16
	-160	12	42	160	20	16
	-SLN16-100	16	48	100	22	18
	-160	16	48	160	22	18
	-SLN20-100	20	52	100	25	20
	-160	20	52	160	25	20
	-SLN25-100	25	65	100	24	25
	-160	25	65	160	24	25
	-SLN32-100	32	72	100	24	28
	-160	32	72	160	24	28
-SLN40-120	40	84	120	30	32	
-160	40	84	160	30	32	
HSK100A	-SLN06-80	6	25	80	12	10
	-120	6	25	120	12	10
	-160	6	25	160	12	10

刀柄部分 TOOLHOLDER

非标准刀具部分
NON-STANDARD TOOL

铣刀部分
MILLING CUTTER

UGL部分
U DRILLING

镗刀部分
BORING TOOL

刀柄部分
TOOLHOLDER

型 号 MODEL NO.	尺寸(mm)					
	d _m	D	L	H1	H2	
HSK100A	-SLN08-80	8	28	80	14	12
	-120	8	28	120	14	12
	-160	8	28	160	14	12
	-SLN10-80	10	35	80	15	14
	-120	10	35	120	15	14
	-160	10	35	160	15	14
	-SLN12-80	12	42	80	20	16
	-120	12	42	120	20	16
	-160	12	42	160	20	16
	-SLN16-100	16	48	100	22	18
	-160	16	48	160	22	18
	-SLN20-100	20	52	100	25	20
	-160	20	52	160	25	20
	-SLN25-100	25	65	100	24	25
	-160	25	65	160	24	25
	-SLN32-100	32	72	100	24	28
	-160	32	72	160	24	28
	-SLN40-120	40	84	120	30	32
-160	40	84	160	30	32	
HSK50C	-SLN06-65	6	25	65	12	10
	-SLN08-65	8	28	65	14	12
	-SLN10-65	10	35	65	15	14
	-SLN12-80	12	42	80	20	16
	-SLN16-80	16	48	80	22	18
	-SLN20-80	20	52	80	25	20

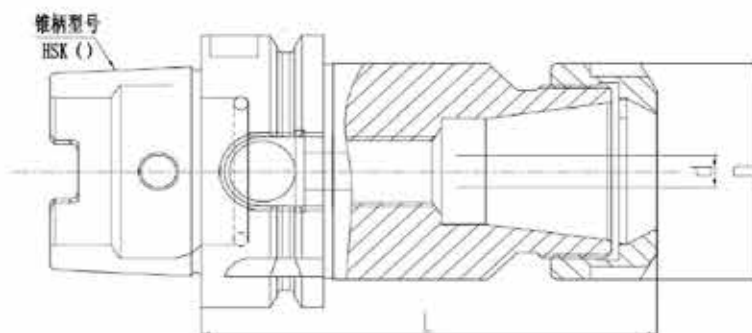
036 弹性筒夹刀柄
HSK SHANK ER COLLET CHUCK
 HSK NO-ER NO-L

特性

- HSK NO 锥柄执行 DIN69893 标准
- 内外锥同轴度 0.003
- 已设动平衡 G6.3/12000

Features

- HSK NO taper shank is in conformity with DIN69893 standard
- Concentricity of the inner and outer cone: 0.003mm
- Dynamic balancing: G6.3/12000rpm



型号	HSK型号	尺寸 (mm)			卡紧	螺母
		dm	D	L		
HSK32A	-ER11-55	0.5-7	19	55	ER11	ER11-A
	-80	0.5-7	19	80	ER11	ER11-A
	-ER16-55	0.5-10	28	55	ER16	ER16-A
	-80	0.5-10	28	80	ER16	ER16-A

刀柄部分 TOOLHOLDER

非研刀具部分
NON-STANDARD TOOL

铣刀部分
MILLING CUTTER

孔钻部分
H. DRILLING

镗刀部分
BORING TOOL

刀柄部分
TOOLHOLDER

型号	HSK型号	尺寸 (mm)			卡套	螺母
		dm	D	L		
HSK40A	-ER11-80	0.5-7	19	80	ER11	ER11-A
	-100	0.5-7	19	100	ER11	ER11-A
	-ER16-80	0.5-10	28	80	ER16	ER16-A
	-100	0.5-10	28	100	ER16	ER16-A
	-ER20-80	1.0-12	34	80	ER20	ER20-A
	-100	1.0-12	34	100	ER20	ER20-A
	-ER25-80	1.0-16	42	80	ER25	ER25-UM
	-100	1.0-16	42	100	ER25	ER25-UM
	-ER32-80	2.0-20	50	80	ER32	ER32-UM
	-100	2.0-20	50	100	ER32	ER32-UM
HSK50A	-ER11-80	0.5-7	19	80	ER11	ER11-A
	-100	0.5-7	19	100	ER11	ER11-A
	-120	0.5-7	19	120	ER11	ER11-A
	-ER16-80	0.5-10	28	80	ER16	ER16-A
	-100	0.5-10	28	100	ER16	ER16-A
	-120	0.5-10	28	120	ER16	ER16-A
	-ER20-80	1.0-12	34	80	ER20	ER20-A
	-100	1.0-12	34	100	ER20	ER20-A
	-120	1.0-12	34	120	ER20	ER25-UM
	-ER25-80	1.0-16	42	80	ER25	ER25-UM
	-100	1.0-16	42	100	ER25	ER25-UM
	-120	1.0-16	42	120	ER25	ER25-UM
	-ER32-80	2.0-20	50	80	ER32	ER32-UM
	-100	2.0-20	50	100	ER32	ER32-UM
-120	2.0-20	50	120	ER32	ER32-UM	

型号	HSK型号	尺寸 (mm)			卡套	螺母
		d	D	L		
HSK63A	-ER11-75	0.5-7	19	75	ER11	ER11-A
	-ER16-80	0.5-10	28	80	ER16	ER16-A
	-100	0.5-10	28	100	ER16	ER16-A
	-120	0.5-10	28	120	ER16	ER16-A
	-160	0.5-10	28	160	ER16	ER16-A
	-ER20-80	1.0-12	34	80	ER20	ER20-A
	-100	1.0-12	34	100	ER20	ER20-A
	-120	1.0-12	34	120	ER20	ER20-A
	-160	1.0-12	34	160	ER20	ER20-A
	-ER25-80	1.0-16	42	80	ER25	ER25-UM
	-100	1.0-16	42	100	ER25	ER25-UM
	-120	1.0-16	42	120	ER25	ER25-UM
	-160	1.0-16	42	160	ER25	ER25-UM
	-ER32-80	2.0-20	50	80	ER32	ER32-UM
	-100	2.0-20	50	100	ER32	ER32-UM
	-120	2.0-20	50	120	ER32	ER32-UM
	-160	2.0-20	50	160	ER32	ER32-UM
	-ER40-80	3.0-26	63	80	ER40	ER40-UM
	-100	3.0-26	63	100	ER40	ER40-UM
	-120	3.0-26	63	120	ER40	ER40-UM
-160	3.0-26	63	160	ER40	ER40-UM	
HSK80A	-ER16-100	0.5-10	28	100	ER16	ER16-A
	-ER20-100	1.0-12	34	100	ER20	ER20-A
	-ER25-100	1.0-16	42	100	ER25	ER32-UM
	-ER32-100	2.0-20	50	100	ER32	ER40-UM
HSK100A	-ER16-100	0.5-10	28	100	ER16	ER16-A
	-120	0.5-10	28	120	ER16	ER16-A
	-160	0.5-10	28	160	ER16	ER16-A

刀柄部分 TOOLHOLDER

非标准刀具部分
NON-STANDARD TOOL

铣刀部分
MILLING CUTTER

孔钻部分
H DRILLING

镗刀部分
BORING TOOL

刀柄部分
TOOLHOLDER

型号	HSK型号	尺寸 (mm)			卡箍	螺母
		d	D	L		
HSK100A	-ER20-100	1.0-12	34	100	ER20	ER20-A
	-120	1.0-12	34	120	ER20	ER20-A
	-160	1.0-12	34	160	ER20	ER20-A
	-ER25-100	1.0-16	42	100	ER25	ER25-UM
	-120	1.0-16	42	120	ER25	ER25-UM
	-160	1.0-16	42	160	ER25	ER25-UM
	-ER32-100	2.0-20	50	100	ER32	ER32-UM
	-120	2.0-20	50	120	ER32	ER32-UM
	-160	3.0-26	63	160	ER32	ER32-UM
	-ER40-100	3.0-26	63	100	ER40	ER40-UM
	-120	3.0-26	63	120	ER40	ER40-UM
	-160	3.0-26	63	160	ER40	ER40-UM
HSK50C	-ER11-60	0.5-7	19	60	ER11	ER11-A
	-100	0.5-7	19	100	ER11	ER11-A
	-120	0.5-7	19	120	ER11	ER11-A
	-ER16-60	0.5-10	28	60	ER16	ER16-A
	-100	0.5-10	28	100	ER16	ER16-A
	-120	0.5-10	28	120	ER16	ER16-A
	-ER20-70	1.0-12	34	70	ER20	ER20-A
	-100	1.0-12	34	100	ER20	ER20-A
	-120	1.0-12	34	120	ER20	ER20-A
	-ER25-70	1.0-16	42	70	ER25	ER25-UM
	-100	1.0-16	42	100	ER25	ER25-UM
	-120	1.0-16	42	120	ER25	ER25-UM
	-ER32-70	2.0-20	50	70	ER32	ER32-UM
	-100	2.0-20	50	100	ER32	ER32-UM
	-120	2.0-20	50	120	ER32	ER32-UM

型号	HSK型号	尺寸 (mm)			卡簧	螺母
		d	D	L		
HSK32E	-ER16-80	0.5-10	28	80	ER16	ER16-A
	-100	0.-10	28	100	ER16	ER16-A
HSK40E	-ER11-80	0.5-7	19	80	ER11	ER11-A
	-100	0.5-7	19	100	ER11	ER11-A
	-ER16-80	0.5-10	28	80	ER16	ER16-A
	-100	0.5-10	28	100	ER16	ER16-A
	-ER20-80	1.0-12	34	80	ER20	ER20-A
	-100	1.0-12	34	100	ER20	ER20-A
	-ER25-80	1.0-16	42	80	ER25	ER25-UM
	-100	1.0-16	42	100	ER25	ER25-UM
	-ER32-80	2.0-20	50	80	ER32	ER32-UM
	-100	2.0-20	50	100	ER32	ER32-UM
HSK50E	-ER11-80	0.5-7	19	80	ER11	ER11-A
	-100	0.5-7	19	100	ER11	ER11-A
	-120	0.5-7	19	120	ER11	ER11-A
	-ER16-80	0.5-10	28	80	ER16	ER16-A
	-100	0.5-10	28	100	ER16	ER16-A
	-120	0.5-10	28	120	ER16	ER16-A
	-ER20-80	1.0-12	34	80	ER20	ER20-A
	-100	1.0-12	34	100	ER20	ER20-A
	-120	1.0-12	34	120	ER20	ER20-A
	-ER25-80	1.0-16	42	80	ER25	ER25-UM
	-100	1.0-16	42	100	ER25	ER25-UM
	-120	1.0-16	42	120	ER25	ER25-UM

刀柄部分 TOOLHOLDER

非研刀部分
NON-STANDARD TOOL

铣刀部分
MILLING CUTTER

孔钻部分
H DRILLING

镗刀部分
BORING TOOL

刀柄部分
TOOLHOLDER

型号	HSK型号	尺寸 (mm)			卡箍	螺母
		d	D	L		
HSK50E	-ER32-80	2.0-20	50	80	ER32	ER32-UM
	-100	2.0-20	50	100	ER32	ER32-UM
	-120	2.0-20	50	120	ER32	ER32-UM
HSK63F	-ER16-80	0.5-10	28	80	ER16	ER16-A
	-100	0.5-10	28	100	ER16	ER16-A
	-120	0.5-10	28	120	ER16	ER16-A
	-160	0.5-10	28	160	ER16	ER16-A
	-ER20-80	1.0-12	34	80	ER20	ER20-A
	-100	1.0-12	34	100	ER20	ER20-A
	-120	1.0-12	34	120	ER20	ER20-A
	-160	1.0-12	34	160	ER20	NER20
	-ER25-80	1.0-16	42	80	ER25	ER25-UM
	-100	1.0-16	42	100	ER25	ER25-UM
	-120	1.0-16	42	120	ER25	ER25-UM
	-160	1.0-16	42	160	ER25	ER25-UM
	-ER32-80	2.0-20	50	80	ER32	ER32-UM
	-100	2.0-20	50	100	ER32	ER32-UM
	-120	2.0-20	50	120	ER32	ER32-UM
	-160	2.0-20	50	160	ER32	ER32-UM
	-ER40-80	3.0-26	63	80	ER40	ER40-UM
	-100	3.0-26	63	100	ER40	ER40-UM
	-120	3.0-26	63	120	ER40	ER40-UM
	-160	3.0-26	63	160	ER40	ER40-UM

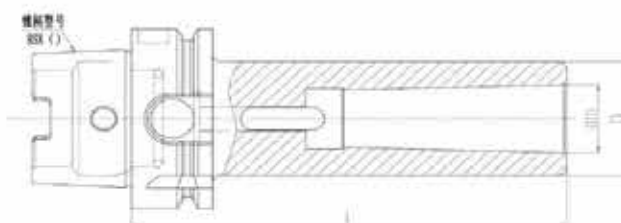
037 HSK 型变径套 (扁尾型)
HSK SHANK MORSE TAPER HOLDER(A TYPE)
 HSK NO-MTA NO-L

特性

◎ HSK NO 锥柄执行 DIN69893 标准

Features

◎ HSK NO taper shank is in conformity with DIN69893 standard



技术参数 : TECHNICAL SPECIFICATIONS

型号	HSK 型号	尺寸 (mm)		
		Φ	d _m	L
HSK40A	-MTA1-90	25	12.065	90
	-MTA2-105	32	17.780	105
HSK50A	-MTA1-100	25	12.065	100
	-MTA2-120	32	17.780	120
HSK63A	-MTA3-140	40	23.825	140
	-MTA1-100	25	12.065	100
	-MTA2-120	32	17.780	120
HSK100A	-MTA3-140	40	23.825	140
	-MTA4-160	48	31.267	160
	-MTA1-110	25	12.065	110
	-MTA2-120	32	17.780	120
HSK50C	-MTA3-150	40	23.825	150
	-MTA4-170	48	31.267	170
	-MTA5-200	63	44.399	200
HSK50C	-MTA1-100	25	12.065	100
	-MTA2-120	32	17.780	120
	-MTA3-140	40	23.825	140

刀柄部分 TOOLHOLDER

非标准刀具部分
NON-STANDARD TOOL

铣刀部分
MILLING CUTTER

钻头部分
IF DRILLING

镗刀部分
BORING TOOL

刀柄部分
TOOLHOLDER

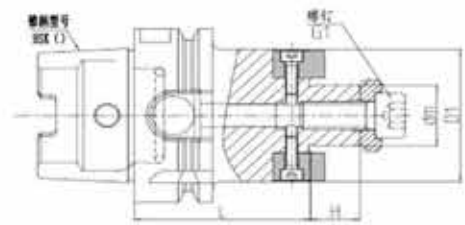
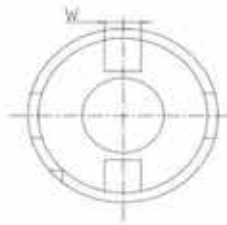
038 面铣刀柄 HSK SHANK FACE MILL HOLDER HSK NO-FMB NO-L

特性

- ◎ HSK NO 锥柄执行 DIN69893 标准
- ◎ 配合直台公差 h6

Features

- ◎ HSK NO taper shank is in conformity with DIN69893 standard
- ◎ Fitting tolerance h6 for straight sets



型号	HSK型号						螺钉(G1)
		dm	D1	L	H	W	
HSK40A	-FMB16-50	16	40	50	16.5	8	M8 × 25
	-FMB22-50	22	48	50	16.5	10	M10 × 30
	-FMB27-60	27	60	60	18.5	12	M12 × 30
HSK50A	-FMB16-50	16	40	50	16.5	8	M8 × 25
	-FMB22-60	22	48	60	16.5	10	M10 × 30
	-FMB27-60	27	60	60	18.5	12	M12 × 30
HSK63A	-FMB16-50	16	40	50	16.5	8	M8 × 25
	-100	16	40	100	16.5	8	M8 × 25
	-145	16	40	145	16.5	8	M8 × 25
	-FMB22-50	22	48	50	16.5	10	M10 × 30
	-100	22	48	100	16.5	10	M10 × 30
	-160	22	48	160	16.5	10	M10 × 30
	-FMB27-60	27	60	60	18.5	12	M12 × 30
	-100	27	60	100	18.5	12	M12 × 30
	-160	27	60	160	18.5	12	M12 × 30
	-FMB32-60	32	62	60	22	14	M16 × 35
	-100	32	62	100	22	14	M16 × 35
	-160	32	62	160	22	14	M16 × 35
-FMB40-60	40	80	60	25	16	M16 × 35	
HSK100A	-FMB22-50	22	48	50	16.5	10	M10 × 30
	-100	22	48	100	16.5	10	M10 × 30

型号	HSK型号						螺钉(G1)
		d _m	D1	L	H	W	
HSK100A	-FMB27-50	27	60	50	18.5	12	M12 × 30
	-100	27	60	100	18.5	12	M12 × 30
	-160	27	60	160	18.5	12	M12 × 30
	-FMB32-50	32	73	50	22	14	M16 × 35
	-100	32	73	100	22	14	M16 × 35
	-160	32	73	160	22	14	M16 × 35
	-FMB40-60	40	80	60	25	16	M16 × 35
	-100	40	80	100	25	16	M16 × 35
	-160	40	80	160	25	16	M16 × 35
HSK50C	-FMB16-50	16	40	50	16.5	8	M8 × 25
	-FMB22-60	22	50	60	16.5	10	M10 × 30
	-FMB27-60	27	60	60	18.5	12	M12 × 30
HSK40E	-FMB16-50	16	40	50	16.5	8	M8 × 25
	-FMB22-50	22	50	50	16.5	10	M10 × 30
	-FMB27-60	27	60	60	18.5	12	M12 × 30
HSK50E	-FMB16-50	16	40	50	16.5	8	M8 × 25
	-FMB22-60	22	50	60	16.5	10	M12 × 30
	-FMB27-60	27	60	60	18.5	12	M8 × 25
HSK63F	-FMB16-50	16	40	50	16.5	8	M8 × 25
	-100	16	40	100	16.5	8	M8 × 25
	-145	16	40	145	16.5	8	M8 × 25
	-FMB22-50	22	50	50	16.5	10	M10 × 30
	-100	22	50	100	16.5	10	M10 × 30
	-160	22	50	160	16.5	10	M10 × 30
	-FMB27-60	27	60	60	18.5	12	M12 × 30
	-100	27	60	100	18.5	12	M12 × 30
	-160	27	60	160	18.5	12	M12 × 30
	-FMB32-60	32	78	60	22	8	M16 × 35
	-100	32	78	100	22	8	M16 × 35
	-160	32	78	160	22	8	M16 × 35
	-FMB40-60	40	89	60	25	10	M16 × 35

刀柄部分 TOOLHOLDER

非研刀具部分
NON-STANDARD TOOL

铣刀部分
MILLING CUTTER

钻部分
IF DRILLING

镗刀部分
BORING TOOL

刀柄部分
TOOLHOLDER

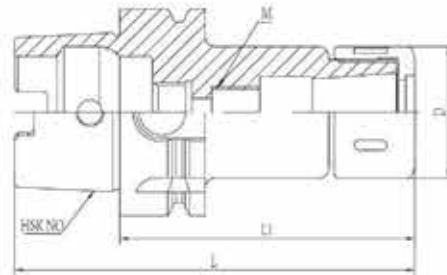
039 弹性筒夹刀柄 HSK SHANK SK COLLET CHUCK HSK NO-SK NO-L

特性

- 内外锥同轴度0.003mm。
- 已设动平衡G6.3/12000

Features

- Concentricity of the inner and outer cone: 0.003mm;
- Dynamic balancing: G6.3/12000rpm



技术参数：TECHNICAL SPECIFICATIONS

规格 MODEL NO	支持范围 CAPACITY	L	Lt	D	筒夹COLLET PAGE 83	螺母NUT PAGE 88	扳手WRENCH PAGE 87/89	
HSK63A	-SK06-80	2-6	112	80	20	SK06	ASK06	OW/SK06 or OB/SK06
	-SK10-60	2-10	92	60	27	SK10	ASK10	OW/SK10 or OB/SK10
	-80		112	80				
	-100	132	100					
	-SK16-80	3-16	112	80	40	SK16	ASK16	A/38-42 or OB/SK16
-SK25-90	6-25.4	122	90	54	SK25	ASK25	A/45-52 or OB/SK25	

注：1.可做动平衡G2.5/20000rpm，另外加价
2.M处刀具定长结构可按客户要求定做

Note: 1. We can provide dynamic balance G2.5/20000rpm. Price would be advanced.
2. Fixed-length structure of M can be customized.

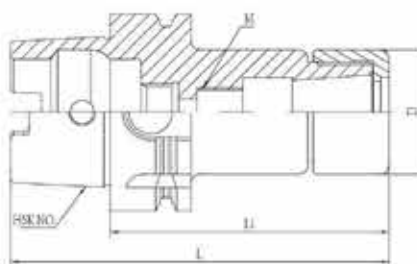
040 弹性筒夹刀柄
HSK SHANK GSK COLLET CHUCK
 HSK NO-GSK NO-L

特性

- 内外锥同轴度0.003mm。
- 已设动平衡G6.3/12000

Features

- Concentricity of the inner and outer cone: 0.003mm;
- Dynamic balancing: G6.3/12000rpm



技术参数： TECHNICAL SPECIFICATIONS

规格 MODEL NO	支持范围 CAPACITY	L	L1	D	筒夹COLLET PAGE83	螺母NUT PAGE89	扳手WRENCH PAGE89	
HSK63A	-GSK06-80	2-6	112	80	20	SK06	GSK06	OB/SK06
	-GSK10-60		92	60				
	-80	2-10	112	80	27	SK10	GSK10	OB/SK10
	-100		132	100				
	-GSK16-80	3-16	112	80	40	SK16	GSK16	OB/SK16
	-GSK25-90	6-25.4	122	90	54	SK25	GSK25	OB/SK25

注：1.可做动平衡G2.5/20000rpm，另外加价
 2.M处刀具定长结构可按客户要求定做

Note: 1. We can provide dynamic balance G2.5/20000rpm. Price would be advanced.
 2. Fixed-length structure of M can be customized.

刀柄部分 TOOLHOLDER

非标准刀具部分
NON-STANDARD TOOL

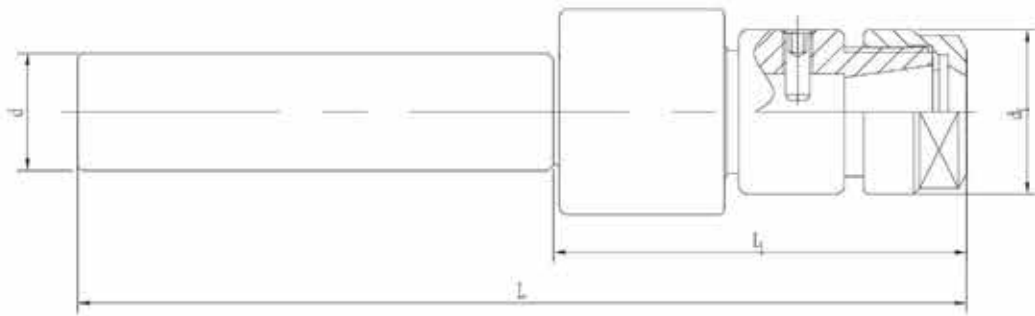
铣刀部分
MILLING CUTTER

铰刀部分
REDRILLING

镗刀部分
BORING TOOL

刀柄部分
TOOLHOLDER

041 直柄伸缩攻牙器 STRAIGHT SHANK TENSION AND COMPRESSION TAPER HOLDER C NO-ER NO-L



技术参数： TECHNICAL SPECIFICATIONS

规格 MODEL NO		L1	d	d1	攻丝范围 Range	适用筒夹 Suitable Collets
C20	-ER16	75	20	28	M3-M10	ER16
	-ER20	80		34	M4-M16	ER20
	-ER25	80		42	M5-M20	ER25
C25	-ER16	75	25	28	M3-M10	ER16
	-ER20	80		34	M4-M16	ER20
	-ER25	80		42	M5-M20	ER25
	-ER32	80		50	M8-M27	ER32
C32	-ER16	75	32	28	M3-M10	ER16
	-ER20	80		34	M4-M16	ER20
	-ER25	80		42	M5-M20	ER25
	-ER32	80		50	M8-M27	ER32
C40	-ER16	75	40	28	M3-M10	ER16
	-ER20	80		34	M4-M16	ER20
	-ER25	80		42	M5-M20	ER25
	-ER32	80		50	M8-M27	ER32

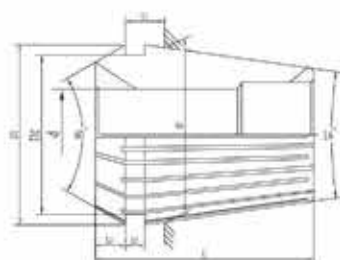
042 ER筒夹
ER COLLET

特性

- 选用优质弹簧钢: 65Mn
- 硬度: HRC44-48

Features

- Made of special elastic steel: 65Mn
- Hardness: HRC44-48



技术参数: TECHNICAL SPECIFICATIONS

规格 MODEL NO	DH7	D	D1	D2	L	L1	L2	L3	弹性收缩量 Collectible Capacity
ER8	1.0-5.0	8	8.45	6.5	13.5	2.98	1.5	1.2	0.5
ER11	1.0-7.0	11	11.5	9.5	18	3.8	2.5	2	0.5
ER16	1.0-2.5	16	17	13.8	27.5	6.26	4	2.7	0.5
	2.5-10.0	16	17	13.8	27.5	6.26	4	2.7	1
ER20	1.0-2.5	20	21	17.4	31.5	6.36	4.8	2.8	0.5
	2.5-13.0	20	21	17.4	31.5	6.36	4.8	2.8	1
ER25	1.0-2.5	25	26	22	34	6.66	5	3.1	0.5
	2.5-16.0	25	26	22	34	6.66	5	3.1	1
ER32	2.0-2.5	32	33	29.2	40	7.16	5.5	3.6	0.5
	2.5-20.0	32	33	29.2	40	7.16	5.5	3.6	1
ER40	3.0-26.0	40	41	36.2	46	7.66	7	4.1	1
ER50	6.0-10.0	50	52	46	60	12.6	8.5	5.5	1
	10.0-34.0	50	52	46	60	12.6	8.5	5.5	2

刀柄部分 TOOLHOLDER

非研刀部分
NON-STANDARD TOOL

铣刀部分
MILLING CUTTER

孔钻部分
H. DRILLING

镗刀部分
BORING TOOL

刀柄部分
TOOLHOLDER

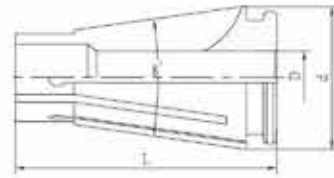
043 SK筒夹 SK COLLET

特性

- 选用优质弹簧钢: 65Mn
- 硬度: HRC44-48

Features

- Made of special elastic steel: 65Mn
- Hardness: HRC44-48



技术参数: TECHNICAL SPECIFICATIONS

规格 MODEL NO	DH7	d	L	范围	规格 MODEL NO	DH7	d	L	范围
SK06	2	10.5	25.7	2-1.25	SK16	9	24.6	46	9-8.5
	2.5			9.5		9.5-9			
	3			10		10-9.5			
	3.5			10.5		10.5-9			
	4			11		11-10.5			
	4.5			11.5		11.5-11			
	5			12		12-11.5			
	5.5			12.5		12.5-12			
6	13	13-12.5							
SK10	2	15.6	32	2-1.25		13.5			13.5-13
	2.5			14		14-13.5			
	3			14.5		14.5-13			
	3.5			15		15-14.5			
	4			15.5		15.5-15			
	4.5			16		16-15.5			
	5			6		6-5.5			
	5.5			8	8-7.5				
	6			10	10-9.5				
	6.5			12	12-11.5				
SK16	7	24.6	46	7-6.5	SK25	35.6	58	14-13.5	
	7.5			16				16-15.5	
	8			16.5				16.5-15	
	8.5			17				17-16.5	
	9			17.5				17.5-17	
	9.5			18				18-17.5	
	10			18.5				18.5-18	
	3			19				19-18.5	
	3.175			19.5				19.5-19	
	3.5			20				20-19.5	
	4			20.5				20.5-20	
4.5	21	21-20.5							
5	21.5	21.5-21							
5.5	22	22-21.5							
6	22.5	22.5-22							
6.5	23	23-22.5							
7	23.5	23.5-23							
7.5	24	24-23.5							
8	24.5	24.5-24							
8.5	25	25-24.5							

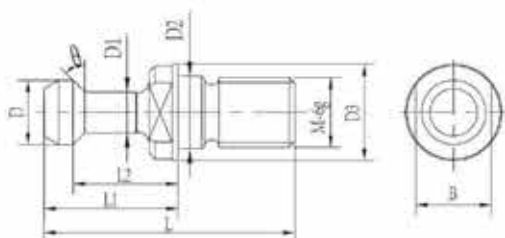
044 BT—拉钉 BT PULL STUD

技术参数： TECHNICAL SPECIFICATIONS

规格 MODEL NO.	L	L1	L2	D	D1	D2	D3	M	φ
BT30	43	23	18	11	7	12.5	16.5	M12	45°/60°/90°
BT40	60	35	28	15	10	17	23	M16	45°/60°/90°
BT50	85	45	35	23	17	25	38	M24	45°/60°/90°

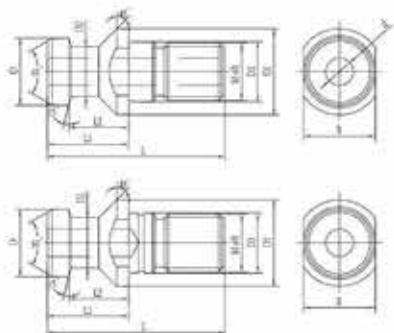
注：如需订购中心出水型请表明

Note: When order center cooling, please specify.



045 DAT—拉钉 DAT PULL STUD

规格 MODEL NO.	L	L1	L2	D	D1	D2	D3	M	φ
DAT30-A	44	24	19	13	17	9	13	M12	11.5
DAT40-A	54	26	20	19	23	14	17	M16	7
DAT50-A	75	34	25	28	36	21	25	M24	-
DAT30-B	44	24	19	13	17	9	13	M12	-
DAT40-B	54	26	20	19	23	14	17	M16	-
DAT50-B	75	34	25	28	36	21	25	M24	-



刀柄部分 TOOLHOLDER

非研刀具部分
NON-STANDARD TOOL

铣刀部分
MILLING CUTTER

孔部分
DRILLING

镗刀部分
BORING TOOL

刀柄部分
TOOLHOLDER

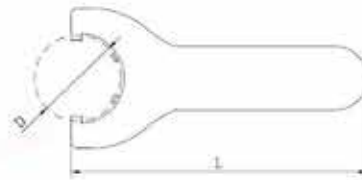
046 ER扳手 ER WRENCH

技术参数： TECHNICAL SPECIFICATIONS

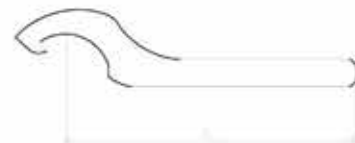
规格 MODEL NO.	K	L	适用螺母 Clamping Nuts
OW/ER11	17	100	ER11-A
OW/ER16	25	128	ER16-A
OW/ER20	30	135	ER20-A



规格 MODEL NO.	D	L	适用螺母 Clamping Nuts
UM/ER25	42	206	ER25-UM
UM/ER32	50	253	ER32-UM
UM/ER40	63	289	ER40-UM



规格 MODEL NO.	L	使用范围 Range	适用螺母 Clamping Nuts
A/38-42	168	38-42	ER25-UM
A/45-52	190	45-52	ER32-UM
A/55-63	210	55-63	ER40-UM
A/68-75	246	68-75	



047 ER螺帽
ER NUT

特性

- 预测动平衡设计。
- 螺纹与夹持锥面同轴度0.003

Features

- Default balancing design;
- Concentricity between thread and clamping cone: 0.003



技术参数： TECHNICAL SPECIFICATIONS

规格 MODEL NO	型式 Type	M	D	L
ER11-A	Fig.1	M14×0.75	19	13
ER16-A	Fig.1	M22×1.52	28	17.5
ER20-A	Fig.1	M25×1.5	34	19
ER25-UM	Fig.2	M32×1.5	42	20
ER32-UM	Fig.2	M40×1.5	50	22.5
ER40-UM	Fig.2	M50×1.5	63	29
ER8-M	Fig.3	M10×0.75	12	12
ER11-M	Fig.3	M13×0.75	16	12
ER16-M	Fig.3	M19×1	22	18
ER20-M	Fig.3	M24×1	28	19
ER25-M	Fig.3	M30×1	35	20
ER25-KM	Fig.4	M32×1.5	42	20
ER32-KM	Fig.4	M40×1.5	50	22.5
ER40-KM	Fig.4	M50×1.5	63	29

刀柄部分 TOOLHOLDER

非研刀具部分
NON-STANDARD TOOL

铣刀部分
MILLING CUTTER

孔部分
H DRILLING

镗刀部分
BORING TOOL

刀柄部分
TOOLHOLDER

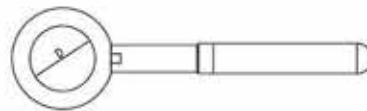
048 SK扳手 SK WRENCH

技术参数：TECHNICAL SPECIFICATIONS

规格 MODEL NO	K	L	适用螺母 Clamping Nuts
OW/SK06	19	100	SK06
OW/SK10	26	128	SK10



规格 MODEL NO	D	适用螺母 Clamping Nuts
OB/SK06	20	SK06
OB/SK10	27	SK10
OB/SK16	40	SK16
OB/SK25	54	SK25



规格 MODEL NO	L	使用范围 Range	适用螺母 Clamping Nuts
A/38-42	168	38-42	SK16
A/45-52	190	45-52	SK25



049 SK 螺帽
SK NUT

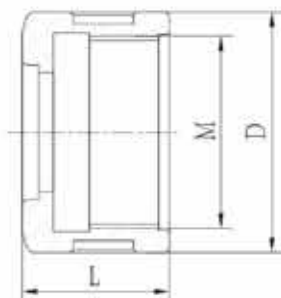
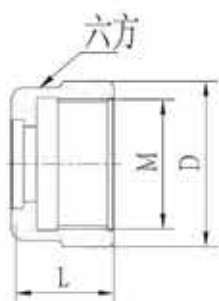
特性

- 预测动平衡设计。
- 螺纹与夹持锥面同轴度0.003

Features

- Default balancing design;
- Concentricity between thread and clamping cone: 0.003

规格 MODEL NO	型式 Type	M	D	L
SK06	Fig.1	M15×1	20	15
SK10	Fig.1	M21.5×1	27	18
SK16	Fig.2	M32×1.5	40	25
SK25	Fig.2	M45×1.5	54	32



刀柄部分 TOOLHOLDER

非研刀具部分
NON-STANDARD TOOL

铣刀部分
MILLING CUTTER

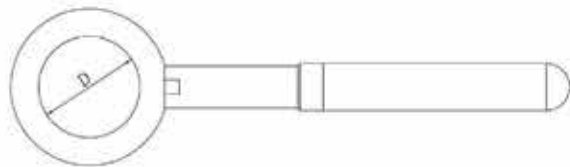
孔部分
DRILLING

镗刀部分
BORING TOOL

刀柄部分
TOOLHOLDER

050 GSK扳手 GSK WRENCH

规格 MODEL NO.	D	适用螺母 NUTS
OB/SK06	20	GSK06
OB/SK10	27	GSK10
OB/SK16	40	GSK16
OB/SK25	54	GSK25



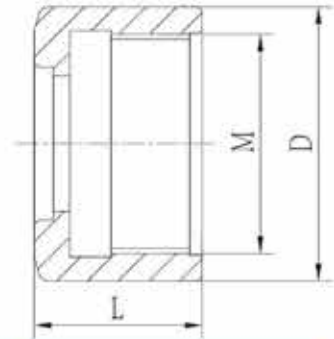
057 GSK 螺帽 GSK NUT

特性

- 预测动平衡设计
- 螺纹与夹持锥面同轴度0.003

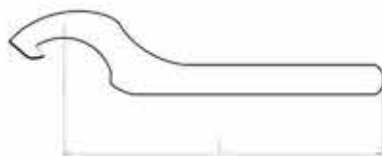
Features

- Default balancing design;
- Concentricity between thread and clamping cone: 0.003



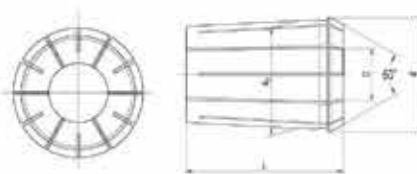
规格 MODEL NO.	M	D	L
GSK06	M15×1	20	15
GSK10	M21.5×1	27	18
GSK16	M32×1.5	40	25
GSK25	M45×1.5	54	32

**051 OZ扳手
OZ WRENCH**



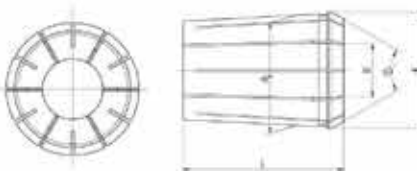
规格 MODEL NO	D1	适用螺母 NUTS
OZ25-W	55-60	OZ25
OZ32-W	80-90	OZ32

**052 OZ筒夹
OZ COLLET**



规格 MODEL NO	L	D1	D2
OZ25A	52	35.05	2-25
OZ32A	60	43.7	4-32

**053 OZ筒夹
OZ COLLET**



规格 MODEL NO	L	d	D
OZ25B	52	35.05	6-25
OZ32B	60	43.7	10-32

刀柄部分 TOOLHOLDER

非标准刀具部分
NON-STANDARD TOOL

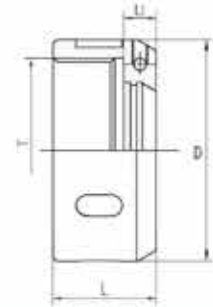
铣刀部分
MILLING CUTTER

孔部分
H DRILLING

镗刀部分
BORING TOOL

刀柄部分
TOOLHOLDER

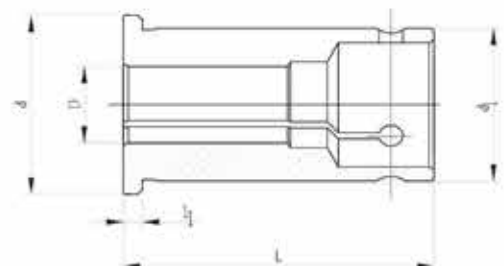
054 OZ螺帽 OZ NUT



规格 MODEL NO	L	L1	D	T
OZ25	30	10.5	60	M48*2
OZ32	33.5	10.5	72	M60*2.5

055 直柄筒夹 STRAIGHT SHANK COLLET

规格 MODEL NO	L	L1	D	d	d1
C25	60	2.5	3,4,5,6,8,10,12,14,16,18,20	30	25
C32	65	4	3,4,5,6,8,10,12,14,16,18,20,25	36	32
C42	78	4	3,4,5,6,8,10,12,14,16,18,20,22,25,28,30,32	48	42





087

镗刀
BORING TOOL



056 **TBH可调式双刃粗镗刀《镗孔范围 $\phi 25-\phi 204\text{mm}$ 》**
TBH Indexable Twin-Bit Rough Boring Head
《Boring Range from $\phi 25-\phi 204\text{mm}$ 》

规格型号 Specification



特 性:

- 适用单刃镗孔，双刃镗孔及高低阶镗孔。镗孔范围 $\phi 25-\phi 204\text{mm}$ 。
- 最适合在各种切削中心或镗床上使用，可搭配多种刀片实用，节省刀具研磨时间，并提高效率。

Features:

- The head is suitable for single bit boring, twin-bit boring and step boring with working diameter from $\phi 25\text{mm}$ to $\phi 204\text{mm}$.
- Most suitable for boring on various machine centers or boring mills. Universal design accepts inserts of any brands, which will reduce tool grinding and greatly improve boring performance.

镗刀部分 BORING TOOL

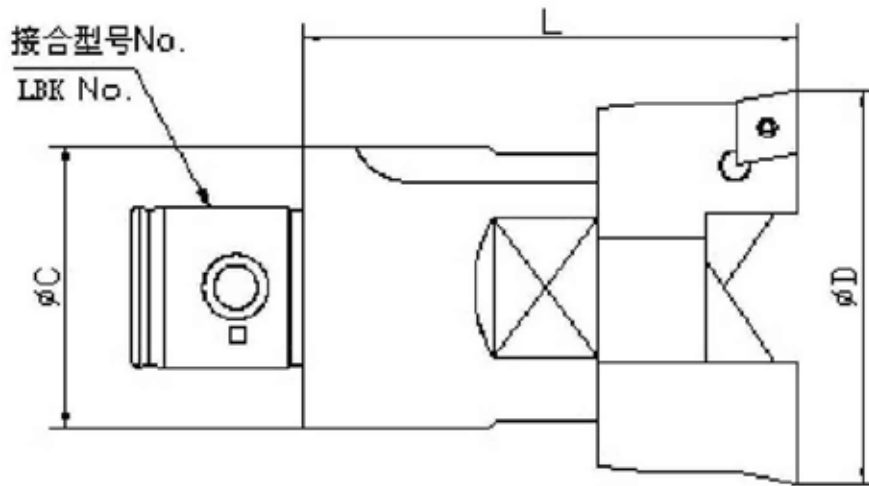
刀柄部分
TOOLHOLDER

非标刀具部分
NON-STANDARD TOOL

铣刀部分
MILLING CUTTER

U钻部分
U DRILLING

镗刀部分
BORING TOOL



镗头型号 Boring Head Type	镗孔范围 Dmm Boring Range	L (mm)	ϕC (mm)	刀片规格 Insert	重量 Kg Weight
TK2-TBH25-33-C	25-33	32	24	CCMT060204	0.1
TK3-TBH32-42-C	32-42	39	31	CCMT060204	0.2
TK4-TBH40-55-C	40-55	48	39	CCMT09T308	0.4
TK5-TBH52-70-C	52-70	55	50	CCMT09T308	0.75
TK6-TBH68-92-C	68-92	69	64	CCMT120408	1.6
TK6-TBH90-122-C	90-122	78	88	CCMT120408	2.5
BST-TBH120-164-C	120-164	100	100	CCMT120408	4.1
BST-TBH160-204-C	160-204		128	CCMT120408	5.2

057 VBH微调式精镗刀系列 VBH Adjustable Fine Boring Series

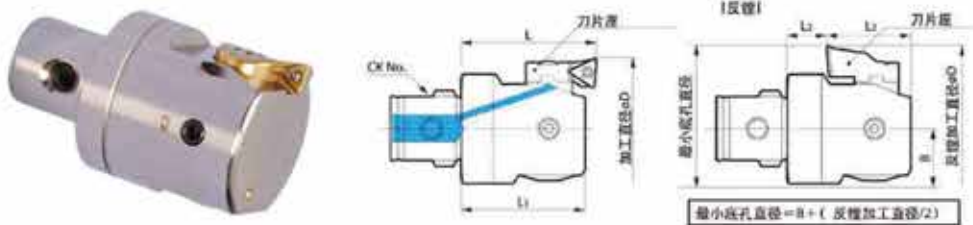
特 性: ○有预平衡设计, 可获得稳定的加工精度。○标准对应反镗工加工, 实用范围广, 增大附加值

Features:

○There is pre-balanced design, achieving stable machining accuracy.

○Standard corresponding anti-boring processing with wide range of practicality, increasing added value.

规格型号 Specification



型号 Type	刀片座 Blade Bearing	正镗 Boring			反镗 Anti-Boring			B	重量 kg/Weight	适用刀片 Insert
		加工范围 Range	L	L1	加工范围 Range	L2	L3			
TK1-VBH20-36	TNH1-1	20-26						10	0.07	TP08
	TNH1-2	25-31	32.5	29.5	30-31	10.5	19			
	TNH1-3	30-36			30-36					
TK2-VBH25-47	TNH2-1	25-33						12.5	0.12	
	TNH2-2	32-40	35.5	32.5	36-40	11.5	21			
	TNH2-3	39-47			39-47					
TK3-VBH32-60	TNH3-1	32-42						16	0.21	
	TNH3-2	41-51	40	35	46-51	10	25			
	TNH3-3	50-60			50-60					
TK4-VBH41-74	TNH4-1	41-54						20	0.4	
	TNH4-2	50-63	47	43	53-63	14	29			
	TNH4-3	61-74			61-74					
TK5-VBH53-95	TNH5-1	53-70						25.5	1.1	
	TNH5-2	65-82	57	53	65-82	19	34			
	TNH5-3	78-95			78-95					
TK6-VBH68-150	TNH6-1	68-100						32.5	1.74	
	TNH6-2	94-126	71	67.2	94-126	22	45.2			
	TNH6-3	118-150			118-150					
TK6-VBH100-203	TNH6-1	100-153						45.5	2.46	
	TNH6-2	126-179	71	67.2	126-179	22	45.2			
	TNH6-3	150-203			150-203					

注意: VBH镗头自身允许最高切削速度为1200m/min, 但实际加工时还与基础柄的长度、机刚及工件的刚性等周边条件有关, 请在容许范围内选择理想的加工条件。

Notice: VBH boring head itself allows maximum cutting speed of 1200m/min. But for actual processing, it is related to the surrounding conditions, such as length of the basic shank, rigidity of the machine and the first piece. Please select the perfect machining condition within the processing range.

镗刀部分 BORING TOOL

刀柄部分
TOOL HOLDER

非标刀具部分
NON-STANDARD TOOL

铣刀部分
MILLING CUTTER

U钻部分
U DRILLING

镗刀部分
BORING TOOL

058 刀片座 PAT.P Blade Bearing

型号 Type	形状图 Fig.	对应镗头 Boring Head	型号 Type	形状图 Fig.	对应镗头 Boring Head	型号 Type	形状图 Fig.	对应镗头 Boring Head
TNH1-1		TK1-VBH20-36	TNH4-1		TK4-VBH41-74	TNH1-1		TK4-VBH41-74
TNH1-2			TNH4-2			TNH1-2		
TNH1-3			TNH4-3			TNH1-3		
TNH2-1		TK2-VBH25-47	TNH5-1		TK5-VBH53-95	TNH2-1		TK5-VBH53-95
TNH2-2			TNH5-2			TNH2-2		
TNH2-3			TNH5-3			TNH2-3		
TNH3-1	对应刀片 TP08	TK3-VBH32-60	TNH6-1	对应刀片 TC11	TK6-VBH68-150	TNH3-1	对应刀片 TC11	TK6-VBH68-150
TNH3-2			TNH6-2		TK6-VBH68-150	TNH3-2		TK6-VBH68-150
TNH3-3			TNH6-3		TK6-VBH150	TNH3-3		TK6-VBH150

注：不带刀片，请另外购买。

Remarks: Inserts are not included, please order separately.

059

精镗刀 Fine Boring Tool

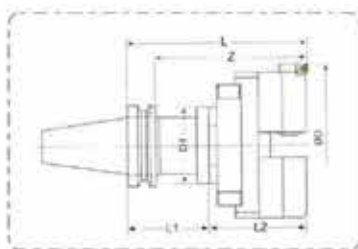
Φ200以上VBH大孔径微调精镗刀+BST刀柄 (MAS 403BT)

VBH Large Diameter Micro Boring Head & BST Shank (MAS 403BT)

《镗孔范围φ200-φ1250mm》

Boring Range from φ200-φ1250mm

规格型号 Specification



型号 Type	接镗孔 范围 Φ(D/mm)	有效长 Z	组合内容 Modular Content		接合型号 LBK No.	全长 L	刀杆 长 L1	刀杆 外径 D1	重量 Kg Weight	
			BST 刀杆 BST Shank	VBH 刀头 VBH Boring Head					合金钢 Alloy Steel	铝合金 Aluminum Alloy
BT50-VBH200-230	200-310	185	BT50-BST-100	VBH200	BST	230	100	95	14.8	12.1
BT50-VBH200-280		235	BT50-BST-150			280	150		16.5	13.8
BT50-VBH200-330		285	BT50-BST-200			330	200		19.2	16.5
BT50-VBH200-380		335	BT50-BST-250			380	250		21.2	18.5
BT50-VBH200-430		385	BT50-BST-300			430	300		23.2	20.5
BT50-VBH200-480		435	BT50-BST-350			480	350		25.2	22.5
BT50-VBH200-530		485	BT50-BST-400			530	400		27.2	24.5
BT50-VBH300-230	300-410	185	BT50-BST-100	VBH300	BST	230	100	95	16.8	12.9
BT50-VBH300-280		235	BT50-BST-150			280	150		18.5	14.6
BT50-VBH300-330		285	BT50-BST-200			330	200		21.2	17.3
BT50-VBH300-380		335	BT50-BST-250			380	250		23.2	19.3
BT50-VBH300-430		385	BT50-BST-300			430	300		25.2	21.3
BT50-VBH300-480		435	BT50-BST-350			480	350		27.2	23.3
BT50-VBH300-530		485	BT50-BST-400			530	400		29.2	25.3

镗刀部分 BORING TOOL

刀柄部分
TOOL HOLDER

非标刀具部分
NON-STANDARD TOOL

铣刀部分
MILLING CUTTER

U钻部分
U DRILLING

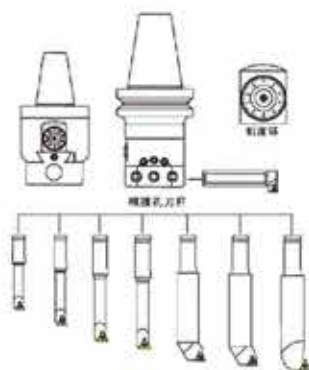
镗刀部分
BORING TOOL

型号 Type	接镗孔 范围 Φ(D/mm)	有效长 Z	组合内容 Modular Content		接合型号 LBK No.	全长 L	刀杆 长 L1	刀杆 外径 D1	重量 Kg Weight	
			BST 刀杆 BST Shank	VBH 刀头 VBH Boring Head					合金钢 Alloy Steel	铝合金 Aluminum Alloy
BT50-VBH400-230	400-510	185	BT50-BST-100	VBH400	BST	230	100	95	18.8	13.7
BT50-VBH400-280		235	BT50-BST-150			280	150		20.5	15.4
BT50-VBH400-330		285	BT50-BST-200			330	200		23.2	18.1
BT50-VBH400-380		335	BT50-BST-250			380	250		25.2	20.1
BT50-VBH400-430		385	BT50-BST-300			430	300		27.2	22.1
BT50-VBH400-480		435	BT50-BST-350			480	350		29.2	24.1
BT50-VBH400-530		485	BT50-BST-400			530	400		31.5	26.1
BT50-VBH500-230	500-610	185	BT50-BST-100	VBH500	BST	230	100	95	20.8	14.5
BT50-VBH500-280		235	BT50-BST-150			280	150		22.5	16.2
BT50-VBH500-330		285	BT50-BST-200			330	200		25.2	18.9
BT50-VBH500-380		335	BT50-BST-250			380	250		27.2	20.9
BT50-VBH500-430		385	BT50-BST-300			430	300		29.2	22.9
BT50-VBH500-480		435	BT50-BST-350			480	350		31.2	24.9
BT50-VBH500-530		485	BT50-BST-400			530	400		33.2	26.9
BT50-VBH600-230	600-950	185	BT50-FMA47.6	VBH600	FMA 47.625	230	75	128	40	22.8
BT50-VBH900-230	900-1250		25-75	VBH900					50	27.5

镗头型号 Boring Head Type	接合型号 LBK No.	镗孔范围 Φ D/mm Boring Range	镗头长度 L2/mm	接刀片规格 / 螺丝 / 扳手 Insert/Clamp Screw/Wrench	接口 Joiner	
					合金钢 Alloy Steel	铝合金 Aluminum Alloy
	VBH200	200-300	130	TC11/M2.5/TB	9.7	7
	VBH300	300-410			11.7	7.8
	VBH400	400-510			13.7	8.6
	VBH500	500-610			15.7	9.4
	VBH600	FMA-47.625	600-950		33	15.8
	VBH900		900-1250		43	20.5

060 NBH2084 微调精镗孔系统 NBH2084 Micro Boring System

规格型号 Specification



型号 Cat. No.	镗孔范围 Boring Range	调整精度 Adjusting Accuracy	调整行程 Stroke	重量 Weight
NBH2084	φ8-φ280	φ0.01mm/Dial	28mm	3

型号 Cat. No.	镗孔范围 Boring Range	D	L1	L	适用刀片 Applicable Insert	螺钉 Clamping Screw	扳手 Wrench	重量Kg Weight
SBJ-2008-32	8-11	20	32	80	TBGT0601..L	M2X5	T6	0.095
SBJ-2010-40	10-13		40	87				
SBJ-2012-53	12-17		53	98	TPGH0902..L	M2.5X6	T8	0.12
SBJ-2016-68	16-21		68	110				
SBJ-2020-83	20-130		83	123				
SBJ-2025-96	25-135		96	137	TPGH1103..L	M3X7	T8	0.34
SBJ-2030-115	30-140		115	152				
SBJ-2020-L	120-280	84+BTL1	100	0.54				
								0.23

镗刀部分 BORING TOOL

刀柄部分
TOOLHOLDER

非标刀具部分
NON-STANDARD TOOL

铣刀部分
MILLING CUTTER

U钻部分
U DRILLING

镗刀部分
BORING TOOL

061 NBH2084 微调精镗孔系统 (套装) NBH2084 Micro Boring System (Set)

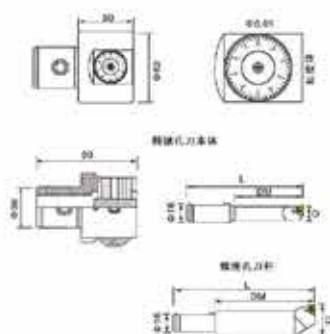
规格型号 Specification



型号 Cat. No.	镗孔范围 Boring Range	主轴柄规格 Spindle Shank	镗头型号 Boring Head No.	镗刀杆 Boring Bar	重量Kg Weight
BT40-NBH2084-8P	08-280	BT40-KBH-50	NBH2084	SBJ-20..	9.5
BT50-NBH2084-8P	08-280	BT50-KBH-55		SBJ-20..	12
NT40-NBH2084-8P	08-280	NT40-KBH-50		SBJ-20..	9.3
NT50-NBH2084-8P	08-280	NT50-KBH-55		SBJ-20..	10.8
SK40-NBH2084-8P	08-280	SK40-KBH-50		SBJ-20..	9.5
SK50-NBH2084-8P	08-280	SK50-KBH-55		SBJ-20..	12
R8-NBH2084-8P	08-280	R8-NBH-50		SBJ-20..	12

062 WBJ16 微调精镗孔系统 WBJ16 Micro Boring System

规格型号 Specification



型号 Cat. No	镗孔范围 Boring Range	调整精度 Adjusting Accuracy	调整行程 Stroke	重量 Weight
WBJ16	φ6-φ51	φ0.01mm/Dial	6mm	1.2

型号 Cat. No	镗孔范围 Boring Range	D	DM	L	适用刀片 Applicable Insert	螺钉 Clamping Screw	扳手 Wrench	重量 Weight
WBJ-1606-24	6-9	16	24	73	WBG0601..L	M2X4	T6	0.014
WBJ-1608-32	8-11		32	80	TBGT0601..L	M2X5		0.077
WBJ-1610-40	10-13		40	87				0.082
WBJ-1612-53	12-15		53	98	TPGH0902..L	M2.5X6	T8	0.095
WBJ-1616-68	16-21		68	110				0.143
WBJ-1620-83	20-26		83	125	TPGH1103..L	M3X7	T8	0.203
WBJ-1625-90	25-31		90	128				0.275
WBJ-1630-90	30-36		90	128				0.275
WBJ-1640-90	40-46		90	128				0.286

镗刀部分 BORING TOOL

刀柄部分
TOOL HOLDER

非标刀具部分
NON-STANDARD TOOL

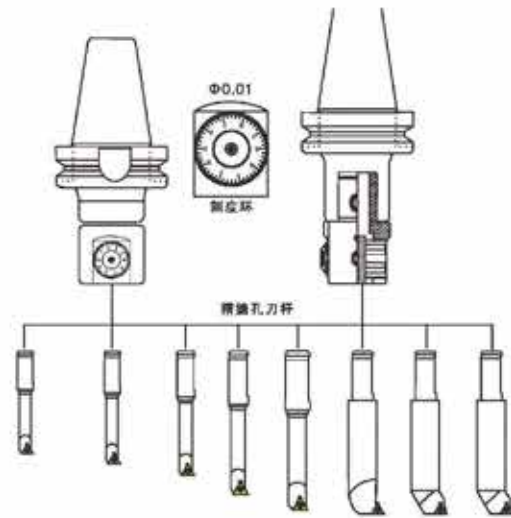
铣刀部分
MILLING CUTTER

U钻部分
U DRILLING

镗刀部分
BORING TOOL

063 WBJ16 微调精镗孔系统 (含8支镗杆) WBJ16 Micro Boring System (8 PCS)

规格型号 Specification



型号 Cat. No	镗孔范围 Boring Range	主轴柄规格 Spindle Shank	镗头型号 Boring Head No.	镗刀杆 Boring Bar	重量Kg Weight
BT40-WBJ16-12P	8-51	BT40-TK6-55	WBJ16	WBJ16..	9.1
BT50-WBJ16-12P	8-51	BT50-TK6-65		WBJ16..	11.7
NT40-WBJ16-12P	8-51	NT40-TK6-55		WBJ16..	8.5
NT50-WBJ16-12P	8-51	NT50-TK6-65		WBJ16..	10.3
SK40-WBJ16-12P	8-51	SK40-TK6-55		WBJ16..	8.9
SK50-WBJ16-12P	8-51	SK50-TK6-65		WBJ16..	10.5



099

U钻部分

U DRILLING



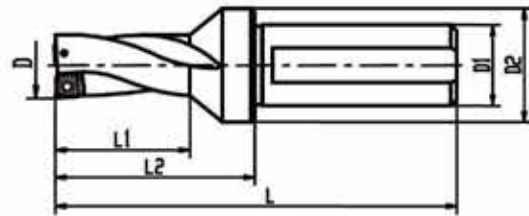
064 KSS C()-D()-2D

特 性: ○定位外圆执行h7标准。○钻削深度为2倍孔径。

Features:

- Positioning external executives standard h7.
- Drilling depth is twice of bore diameter.

规格型号 Specification



技术参数：TECHNICAL SPECIFICATIONS

规格型号 Model	尺寸 Dimension						配件 Parts		刀片 insert
	D	D1	D2	L	L1	L2	螺钉 Screw	扳手 Wrench	
KSS C20-D12.5-2D	12.5			94	26	44	TS 20043I/HG-P	TD 6P	SPMG050204 DG
KSS C20-D13-2D	13			94	26	44			
KSS C20-D13.5-2D	13.5	20	25	96	28	46			
KSS C20-D14-2D	14			96	28	46			
KSS C20-D14.5-2D	14.5			99	30	49			
KSS C20-D15-2D	15			99	30	49			
KSS C25-D15.5-2D	15.5			108	32	52	TS 22052I/HG	TD 7	SPMG060204 DG
KSS C25-D16-2D	16			108	32	52			
KSS C25-D16.5-2D	16.5			110	34	54			
KSS C25-D17-2D	17			110	34	54			
KSS C25-D17.5-2D	17.5			113	36	57			
KSS C25-D18-2D	18			113	36	57			
KSS C25-D18.5-2D	18.5	25	32	115	38	59			
KSS C25-D19-2D	19			115	38	59			
KSS C25-D19.5-2D	19.5			119	40	63			
KSS C25-D20-2D	20			119	40	63			
KSS C25-D20.5-2D	20.5			121	42	65			
KSS C25-D21-2D	21			121	42	65			
KSS C25-D21.5-2D	21.5			123	44	67			
KSS C25-D22-2D	22			123	44	67			
KSS C25-D22.5-2D	22.5	25		127	46	71	TS 25064I	TD 8	SPMG07T308 DG
KSS C32-D22.5-2D		32	45	131	46	71			
KSS C25-D23-2D	23	25		127	46	71			

U钻部分 U DRILLING

镗刀部分
BORING TOOL

刀柄部分
TOOLHOLDER

非标刀具部分
NON-STANDARD TOOL

铣刀部分
MILLING CUTTER

U钻部分
U DRILLING

KSS C32-D23-2D		32		131	46	71			
KSS C25-D23.5-2D	23.5	25		130	48	74			
KSS C32-D23.5-2D		32		134	48	74			
KSS C25-D24-2D	24	25		130	48	74			
KSS C32-D24-2D	24	32		134	48	74			
KSS C25-D24.5-2D	24.5	25		133	50	77			
KSS C32-D24.5-2D		32		137	50	77			
KSS C25-D25-2D	25	25		133	50	77			
KSS C32-D25-2D		32		137	50	77			
KSS C25-D25.5-2D	25.5	25		135	52	79			
KSS C32-D25.5-2D		32		139	52	79	TS 25064I	TD 8	SPMG07T308 DG
KSS C25-D26-2D	26	25		135	52	79			
KSS C32-D26-2D		32		139	52	79			
KSS C25-D26.5-2D	26.5	25		137	54	81			
KSS C32-D26.5-2D		32	45		141	54	81		
KSS C25-D27-2D	27	25		137	54	81			
KSS C32-D27-2D		32		141	54	81			
KSS C25-D27.5-2D	27.5	25		140	56	84			
KSS C32-D27.5-2D		32		144	56	84			
KSS C25-D28-2D	28	25		140	56	84			
KSS C32-D28-2D		32		144	56	84			
KSS C25-D28.5-2D	28.5	25		142	58	86			
KSS C32-D28.5-2D		32		146	58	86			
KSS C25-D29-2D	29	25		142	58	86			
KSS C32-D29-2D		32		146	58	86			
KSS C32-D29.5-2D	29.5	32		151	60	91			
KSS C40-D29.5-2D		40		161	60	91			
KSS C32-D30-2D	30	32		151	60	91	TS 35088I	TD 10	SPMG 090408 DG
KSS C40-D30-2D		40		161	60	91			
KSS C32-D31-2D	31	32		154	62	94			
KSS C40-D31-2D		40		164	62	94			
KSS C32-D32-2D	32	32		156	64	96			
KSS C40-D32-2D		40		166	64	96			
KSS C32-D33-2D	33	32	55		159	66	99		
KSS C40-D33-2D		40		169	66	99			
KSS C32-D34-2D	34	32		161	68	101			
KSS C40-D34-2D		40		171	68	101			
KSS C32-D35-2D	35	32		164	70	104			
KSS C40-D35-2D		40		174	70	104			
KSS C32-D36-2D	36	32		167	72	107	TS 40093I	TD 15	SPMG110408 DG
KSS C40-D36-2D		40		177	72	107			
KSS C32-D37-2D	37	32		170	74	110			
KSS C40-D37-2D		40		180	74	110			

KSS C32-D38-2D	38	32	60	173	76	113	TS 40093I	TD 15	SPMG110408 DG			
KSS C40-D38-2D		40		183	76	113						
KSS C32-D39-2D	39	32	175	78	115							
KSS C40-D39-2D		40	185	78	115							
KSS C32-D40-2D	40	32	178	80	118							
KSS C40-D40-2D	40	188	80	118								
KSS C40-D41-2D	41	191	82	121								
KSS C40-D42-2D	42	193	84	123								
KSS C40-D43-2D	43	196	86	126								
KSS C40-D44-2D	44	40	60	198	88	128				SO 50090I	TD20	SPMG 140512 DG
KSS C40-D45-2D	45	202	90	132								
KSS C40-D46-2D	46	205	92	135								
KSS C40-D47-2D	47	207	94	137								
KSS C40-D48-2D	48	210	96	140								
KSS C40-D49-2D	49	212	98	142								
KSS C40-D50-2D	50	215	100	145								

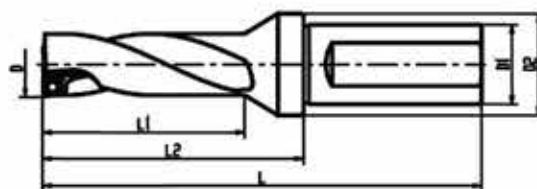
065 KSS C()-D()-3D

特 性: ◎定位外圆执行h7标准。◎钻削深度为3倍孔径。

Features:

- ◎Positioning external executives standard h7.
- ◎Drilling depth is three times of bore diameter.

规格型号 Specification



U钻部分 U DRILLING

镗刀部分
BORING TOOL

刀柄部分
TOOLHOLDER

非标刀具部分
NON-STANDARD TOOL

铣刀部分
MILLING CUTTER

U钻部分
U DRILLING

技术参数： TECHNICAL SPECIFICATIONS

规格型号 Model	尺寸 Dimension						配件 Parts		刀片 Insert
	D	D1	D2	L	L1	L2	螺钉 Screw	扳手 Wrench	
KSS C20-D12.5-3D	12.5	20	25	107	39	57	TS 20043I/HG-P	TD 6P	SPMG050204 DG
KSS C20-D13-3D	13			107	39	57			
KSS C20-D13.5-3D	13.5			110	42	60			
KSS C20-D14-3D	14			110	42	60			
KSS C20-D14.5-3D	14.5			114	45	64			
KSS C20-D15-3D	15			114	45	64			
KSS C25-D15.5-3D	15.5	25	32	124	48	68	TS 22052I/HG	TD 7	SPMG060204 DG
KSS C25-D16-3D	16			124	48	68			
KSS C25-D16.5-3D	16.5			127	51	71			
KSS C25-D17-3D	17			127	51	71			
KSS C25-D17.5-3D	17.5			131	54	75			
KSS C25-D18-3D	18			131	54	75			
KSS C25-D18.5-3D	18.5			134	57	78			
KSS C25-D19-3D	19			134	57	78			
KSS C25-D19.5-3D	19.5			139	60	83			
KSS C25-D20-3D	20			139	60	83			
KSS C25-D20.5-3D	20.5			142	63	86			
KSS C25-D21-3D	21			142	63	86			
KSS C25-D21.5-3D	21.5	145	66	89					
KSS C25-D22-3D	22	145	66	89					
KSS C25-D22.5-3D	22.5	25	45	150	69	94	TS 25064I	TD 8	SPMG07T308 DG
KSS C32-D22.5-3D		32		154	69	94			
KSS C25-D23-3D	23	25		150	69	94			
KSS C32-D23-3D		32		154	69	94			
KSS C25-D23.5-3D	23.5	25		154	72	98			
KSS C32-D23.5-3D		32		158	72	98			
KSS C25-D24-3D	24	25		154	72	98			
KSS C32-D24-3D	24	32		158	72	98			
KSS C25-D24.5-3D	24.5	25		158	75	102			
KSS C32-D24.5-3D		32		162	75	102			
KSS C25-D25-3D	25	25		158	75	102			
KSS C32-D25-3D		32		162	75	102			
KSS C25-D25.5-3D	25.5	25	161	78	105				
KSS C32-D25.5-3D		32	165	78	105				
KSS C25-D26-3D	26	25	161	78	105				
KSS C32-D26-3D		32	165	78	105				

规格型号 Model	尺寸 Dimension						配件 Parts		刀片 insert
	D	D1	D2	L	L1	L2	螺钉 Screw	扳手 Wrench	
KSS C25-D26.5-3D	26.5	25	55	164	81	108	TS 35088I	TD 10	SPMG 090408 DG
KSS C32-D26.5-3D		32		168	81	108			
KSS C25-D27-3D	27	25		164	81	108			
KSS C32-D27-3D		32		168	81	108			
KSS C25-D27.5-3D	27.5	25		168	84	112			
KSS C32-D27.5-3D		32		172	84	112			
KSS C25-D28-3D	28	25		168	84	112			
KSS C32-D28-3D		32		172	84	112			
KSS C25-D28.5-3D	28.5	25		171	87	115			
KSS C32-D28.5-3D		32		175	87	115			
KSS C25-D29-3D	29	25		171	87	115			
KSS C32-D29-3D		32		175	87	115			
KSS C32-D29.5-3D	29.5	32	181	90	121				
KSS C40-D29.5-3D		40	191	90	121				
KSS C32-D30-3D	30	32	181	90	121				
KSS C40-D30-3D		40	191	90	121				
KSS C32-D31-3D	31	32	185	93	125				
KSS C40-D31-3D		40	195	93	125				
KSS C32-D32-3D	32	32	188	96	128				
KSS C40-D32-3D		40	198	96	128				
KSS C32-D33-3D	33	32	192	99	132				
KSS C40-D33-3D		40	202	99	132				
KSS C32-D34-3D	34	32	195	102	135				

U钻部分 U DRILLING

镗刀部分
BORING TOOL

刀柄部分
TOOLHOLDER

非标刀具部分
NON-STANDARD TOOL

铣刀部分
MILLING CUTTER

U钻部分
U DRILLING

规格型号 Model	尺寸 Dimension						配件 Parts		刀片 Insert
	D	D1	D2	L	L1	L2	螺钉 Screw	扳手 Wrench	
KSS C40-D34-3D		40		205	102	135	TS 40093I	TD 15	SPMG110408 DG
KSS C32-D35-3D	35	32		199	105	139			
KSS C40-D35-3D		40		209	105	139			
KSS C32-D36-3D	36	32		203	108	143			
KSS C40-D36-3D		40		213	108	143			
KSS C32-D37-3D	37	32		207	111	147			
KSS C40-D37-3D		40		217	111	147			
KSS C32-D38-3D	38	32		211	114	151			
KSS C40-D38-3D		40		221	114	151			
KSS C32-D39-3D	39	32		214	117	154			
KSS C40-D39-3D		40		224	117	154			
KSS C32-D40-3D	40	32	60	218	120	158			
KSS C40-D40-3D	40			228	120	158			
KSS C40-D41-3D	41			232	123	162			
KSS C40-D42-3D	42			235	126	165			
KSS C40-D43-3D	43			239	129	169			
KSS C40-D44-3D	44			242	132	172			
KSS C40-D45-3D	45	40	60	247	135	177	SO 50090I	TD20	SPMG 140512 DG
KSS C40-D46-3D	46			251	138	181			
KSS C40-D47-3D	47			254	141	184			
KSS C40-D48-3D	48			258	144	188			
KSS C40-D49-3D	49			261	147	191			
KSS C40-D50-3D	50			265	150	195			

066 KSS C()-D()-4D

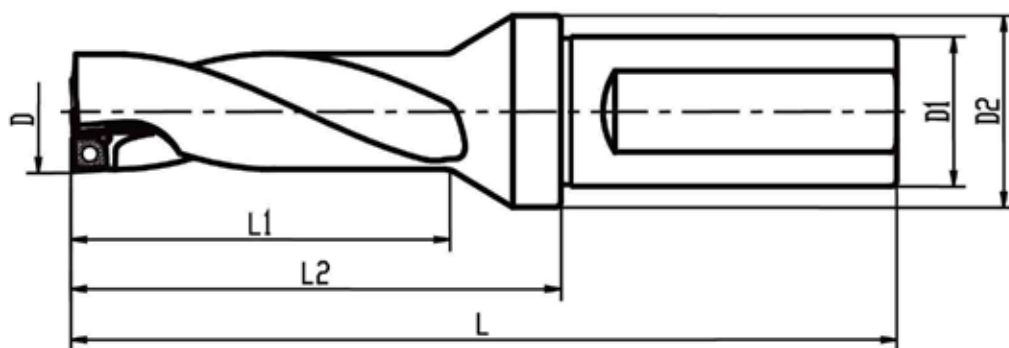
特性

- 定位外圆执行h7标准。
- 钻削深度为4倍孔径。

Features

- Positioning external executives standard h7.
- Drilling depth is four times of bore diameter.

规格型号 Specification



U钻部分 U DRILLING

镗刀部分
BORING TOOL

刀柄部分
TOOLHOLDER

非标刀具部分
NON-STANDARD TOOL

铣刀部分
MILLING CUTTER

U钻部分
U DRILLING

技术参数： TECHNICAL SPECIFICATIONS

规格型号 Model	尺寸 Dimension						配件 Parts		刀片 Insert
	D	D1	D2	L	L1	L2	螺钉 Screw	扳手 Wrench	
KSS C20-D12.5-4D	12.5	20	25	120	52	70	TS 20043I/HG-P	TD 6P	SPMG050204 DG
KSS C20-D13-4D	13			120	52	70			
KSS C20-D13.5-4D	13.5			124	56	74			
KSS C20-D14-4D	14			124	56	74			
KSS C20-D14.5-4D	14.5			129	60	79			
KSS C20-D15-4D	15			129	60	79			
KSS C25-D15.5-4D	15.5	25	32	140	64	84	TS 22052I/HG	TD 7	SPMG060204 DG
KSS C25-D16-4D	16			140	64	84			
KSS C25-D16.5-4D	16.5			144	68	88			
KSS C25-D17-4D	17			144	68	88			
KSS C25-D17.5-4D	17.5			149	72	93			
KSS C25-D18-4D	18			149	72	93			
KSS C25-D18.5-4D	18.5			153	76	97			
KSS C25-D19-4D	19			153	76	97			
KSS C25-D19.5-4D	19.5			159	80	103			
KSS C25-D20-4D	20			159	80	103			
KSS C25-D20.5-4D	20.5			163	84	107			
KSS C25-D21-4D	21			163	84	107			
KSS C25-D21.5-4D	21.5			167	88	111			
KSS C25-D22-4D	22			167	88	111			
KSS C25-D22.5-4D	22.5	25	45	173	92	117	TS 25064I	TD 8	SPMG07T308 DG
KSS C32-D22.5-4D		32		177	92	117			
KSS C25-D23-4D	23	25		173	92	117			
KSS C32-D23-4D		32		177	92	117			
KSS C25-D23.5-4D	23.5	25		178	96	122			
KSS C32-D23.5-4D		32		182	96	122			
KSS C25-D24-4D	24	25		178	96	122			
KSS C32-D24-4D	24	32		182	96	122			
KSS C25-D24.5-4D		25		183	100	127			
KSS C32-D24.5-4D	24.5	32		187	100	127			
KSS C25-D25-4D	25	25		183	100	127			
KSS C32-D25-4D		32		187	100	127			
KSS C25-D25.5-4D	25.5	25		187	104	131			
KSS C32-D25.5-4D		32		191	104	131			
KSS C25-D26-4D	26	25		187	104	131			
KSS C32-D26-4D		32		191	104	131			
KSS C25-D26.5-4D	26.5	25		191	108	135			
KSS C32-D26.5-4D		32		195	108	135			
KSS C25-D27-4D	27	25	191	108	135				

KSS C32-D27-4D		32		195	108	135			
KSS C25-D27.5-4D	27.5	25		196	112	140			
KSS C32-D27.5-4D		32		200	112	140			
KSS C25-D28-4D	28	25		196	112	140			
KSS C32-D28-4D		32		200	112	140			
KSS C25-D28.5-4D	28.5	25		200	116	144			
KSS C32-D28.5-4D		32		204	116	144			
KSS C25-D29-4D	29	25		200	116	144			
KSS C32-D29-4D		32		204	116	144			
KSS C32-D29.5-4D	29.5	32		211	120	151			
KSS C40-D29.5-4D		40		221	120	151	TS 35088I	TD 10	SPMG 090408 DG
KSS C32-D30-4D	30	32		211	120	151			
KSS C40-D30-4D		40		221	120	151			
KSS C32-D31-4D	31	32		216	124	156			
KSS C40-D31-4D		40		226	124	156			
KSS C32-D32-4D	32	32		220	128	160			
KSS C40-D32-4D		40		230	128	160			
KSS C32-D33-4D	33	32		225	132	165			
KSS C40-D33-4D		40	55	235	132	165			
KSS C32-D34-4D	34	32		229	136	169			
KSS C40-D34-4D		40		239	136	169			
KSS C32-D35-4D	35	32		234	140	174			
KSS C40-D35-4D		40		244	140	174			
KSS C32-D36-4D	36	32		239	144	179			
KSS C40-D36-4D		40		249	144	179			
KSS C32-D37-4D	37	32		244	148	184	TS 40093I	TD 15	SPMG110408 DG
KSS C40-D37-4D		40		254	148	184			
KSS C32-D38-4D	38	32		249	152	189			
KSS C40-D38-4D		40		259	152	189			
KSS C32-D39-4D	39	32		253	156	193			
KSS C40-D39-4D		40		263	156	193			
KSS C32-D40-4D	40	32	60	258	160	198			
KSS C40-D40-4D	40	40		268	160	198	TS 40093I	TD 15	SPMG110408 DG
KSS C40-D41-4D	41			273	164	203			
KSS C40-D42-4D	42	42		277	168	207			
KSS C40-D43-4D	43	43		282	172	212			
KSS C40-D44-4D	44	44		286	176	216			
KSS C40-D45-4D	45	45	60	292	180	222			
KSS C40-D46-4D	46	46		297	184	227	SO 50090I	TD20	SPMG 140512 DG
KSS C40-D47-4D	47	47		301	188	231			
KSS C40-D48-4D	48	48		306	192	236			
KSS C40-D49-4D	49	49		310	196	240			
KSS C40-D50-4D	50	50		315	200	245			

U钻部分 U DRILLING

钻头部分
BORING TOOL

刀柄部分
TOOLHOLDER

非标刀具部分
NON-STANDARD TOOL

铣刀部分
MILLING CUTTER

U钻部分
U DRILLING

067 KSS C()-D()-5D

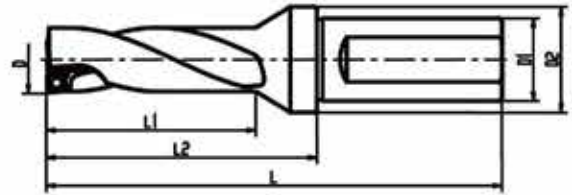
特性

- 定位外圆执行h7标准。
- 钻削深度为5倍孔径。

Features

- Positioning external executives standard h7.
- Drilling depth is five times of bore diameter.

规格型号 Specification



技术参数： TECHNICAL SPECIFICATIONS

规格型号 Model	尺寸 Dimension						配件 Parts		刀片 Insert
	D	O1	O2	L	L1	L2	螺钉 Screw	扳手 Wrench	
KSS C25-D16-5D	16	25	32	156	80	100	TS 22052I/HG	TD 7	SPMG060204 DG
KSS C25-D17-5D	17			161	85	105			
KSS C25-D18-5D	18			167	90	111			
KSS C25-D19-5D	19			172	95	116			
KSS C25-D20-5D	20			179	100	123			
KSS C25-D21-5D	21			184	105	128			
KSS C25-D22-5D	22			189	110	133			
KSS C32-D23-5D	23	32	45	200	115	140	TS 25064I	TD 8	SPMG07T308 DG
KSS C32-D24-5D	24			206	120	146			
KSS C32-D25-5D	25			212	125	152			
KSS C32-D26-5D	26			217	130	157			
KSS C32-D27-5D	27			222	135	162			



111

铣刀部分

MILLING CUTTER



068 高速平面铣刀 High Speed Face Mill Head

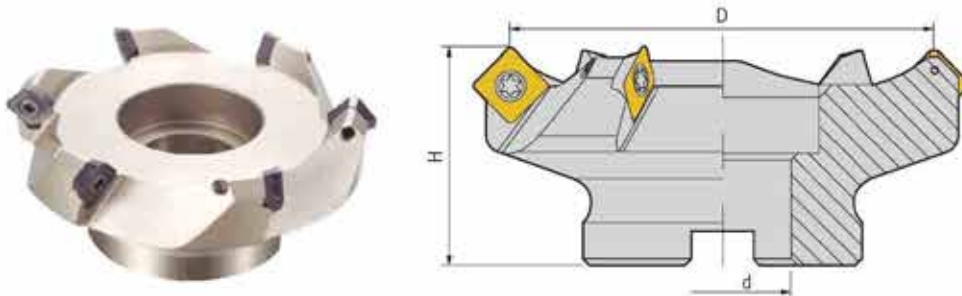
特性

- 双正前角，切削锋利、不易振动。
- 刀片通用性好，适用多家品牌刀片。
- 用途广，可铣面、倒角、仿形。

Features

- Double positive rake angle, sharp cutting, not easily to vibrate.
- Universal insert, suitable for inserts of several brands.
- Wide application, such as face-milling, chamfering and profiling.

规格型号 Specification



技术参数：TECHNICAL SPECIFICATIONS

规格Model	齿数Teeth	直径DIA	接口Joiner	高度Height	适用刀片Suitable Insert	螺钉Screw	扳手Wrench	重量Weight
40A04R-S45SE12-22	4	40	22	50	SEKT1204...	M5	T20	0.50
63A05R-S45SE12-22	5	63	22	50	SEKT1204...	M5	T20	0.75
80A05R-S45SE12-27	5	80	27	50	SEKT1204...	M5	T20	1.15
100A06R-S45SE12-32	6	100	32	50	SEKT1204...	M5	T20	1.75
125A06R-S45SE12-40	6	125	40	63	SEKT1204...	M5	T20	3.15
160A08R-S45SE12-40	8	160	40	63	SEKT1204...	M5	T20	
200A10R-S45SE12-40	10	200	40	63	SEKT1204...	M5	T20	
250C12R-S45SE12-40	12	250	40	63	SEKT1204...	M5	T20	

铣刀部分 MILLING CUTTER

铣床部分
M DRILLING

镗刀部分
BORING TOOL

刀柄部分
TOOLHOLDER

非标刀具部分
NON-STANDARD TOOL

铣刀部分
MILLING CUTTER

069 直角平面铣刀 Square Face Mill Head

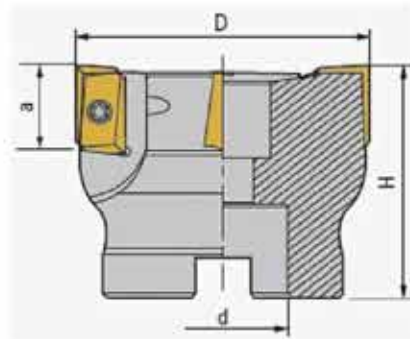
特性

- 方肩铣刀，最大切削可达15mm。
- 刀片通用性好，适用多家品牌刀片。
- 用途广，可铣方肩、扩孔、开槽、仿形。

Features

- Square shoulder milling cutter with max cutting range of 15mm.
- Universal insert, suitable for inserts of several brands.
- Wide application, such as square shoulder milling, reaming, slotting and profiling.

规格型号 Specification



技术参数：TECHNICAL SPECIFICATIONS

规格 Model	齿数 Teeth	直径 DIA	接口 Joiner	高度 Height	适用刀片 Suitable Insert	螺钉 Screw	扳手 Wrench	重量 Weight
50A04R-S90AP16-22	4	50	22	50	APMT1604...	M4	T15	0.4
63A05R-S90AP16-22	5	63	22	50	APMT1604...	M4	T15	0.65
80A06R-S90AP16-27	6	80	27	50	APMT1604...	M4	T15	1.00
100A06R-S90AP16-32	6	100	32	50	APMT1604...	M4	T15	1.25
125A08R-S90AP16-40	8	125	40	63	APMT1604...	M4	T15	3.15
160A08R-S90AP16-40	8	160	40	63	APMT1604...	M4	T15	5.10
200A10R-S90AP16-40	10	200	40	63	APMT1604...	M4	T15	6.70
250C12R-S90AP16-40	12	250	40	63	APMT1604...	M4	T15	8.20

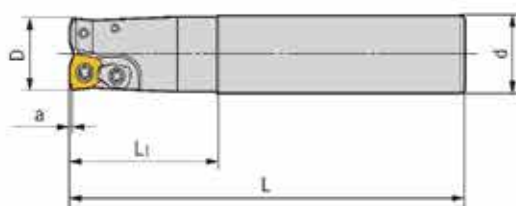
070 大进给立铣刀 High Feed End Mill

特性 ○整体锥形设计、刚性好，适合粗加工。○特殊合金钢材料，耐磨性更好，寿命更长。
○刀片通用性好，多品牌通用。

Features

- Integral taper design, high rigidity, fit for rough machining.
- Special alloy steel materials are adopted with better abrasion resistance and longer lifetime.
- Universal insert, suitable for various brands.

规格型号 Specification



规格Model	齿数 Teeth Z	直径 DIA D	柄部 Shank d	有效 Effective Length L1	总长 Total Length L	适用刀片 Suitable Insert	螺钉 Screw	压板 Clamp	扳手 Wrench
VJX-C20-20-130	2	20	20	50	130	JOMT080320	M3	Y-4R	T8
VJX-C20-22-130	2	22	20	30	130	JOMT080320	M3	Y-4R	T8
VJX-C20-20-180	2	20	20	100	180	JOMT080320	M3	Y-4R	T8
VJX-C20-22-180	2	22	20	30	180	JOMT080320	M3	Y-4R	T8
VJX-C20-20-250	2	20	20	130	250	JOMT080320	M3	Y-4R	T8
VJX-C20-22-250	2	22	20	30	250	JOMT080320	M3	Y-4R	T8
VJX-C25-25-140	2	25	25	60	140	JDMW09T320	M3.5	Y-4R	T15
VJX-C25-28-140	2	28	25	40	140	JDMW09T320	M3.5	Y-4R	T15
VJX-C25-25-200	2	25	25	120	200	JDMW09T320	M3.5	Y-4R	T15
VJX-C25-28-200	2	28	25	40	200	JDMW09T320	M3.5	Y-4R	T15
VJX-C25-25-250	2	25	25	130	250	JDMW09T320	M3.5	Y-4R	T15
VJX-C25-28-250	2	28	25	40	250	JDMW09T320	M3.5	Y-4R	T15
VJX-C32-32-150	2	32	32	70	150	JDMW120420	M4	Y-4R	T15
VJX-C32-32-200	2	32	32	120	200	JDMW120420	M4	Y-4R	T15
VJX-C32-32-250	2	32	32	120	200	JDMW120420	M4	Y-4R	T15
VJX-C32-35-150	2	32	32	70	150	JDMW120420	M4	Y-4R	T15
VJX-C32-35-200	2	32	32	70	200	JDMW120420	M4	Y-4R	T15
VJX-C32-35-250	2	32	32	70	250	JDMW120420	M4	Y-4R	T15
VJX-C32-40-200	3	40	32	70	200	JDMW120420	M4	Y-4R	T15
VJX-C32-35-250	3	40	32	70	250	JDMW120420	M4	Y-4R	T15
VJX-C32-35-300	3	40	32	70	300	JDMW120420	M4	Y-4R	T15

铣刀部分 MILLING CUTTER

钻头部分
DRILLING

镗刀部分
BORING TOOL

刀柄部分
TOOL HOLDER

非标刀具部分
NON-STANDARD TOOL

铣刀部分
MILLING CUTTER

071 圆刀刃平面铣刀 Rounding Face Mill Head

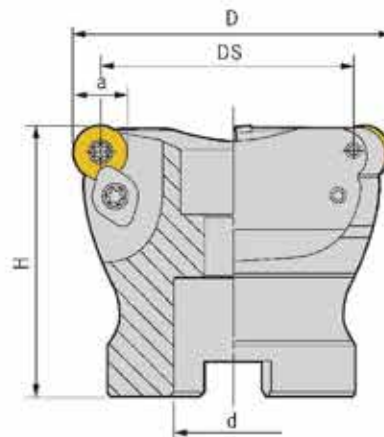
特性

- 刀体硬度高，刚性好，适合高进给。
- 刀片通用性好，适用多家品牌刀片。
- 用途广，可铣型腔、扩孔、开槽、仿形。

Features

- High rigidity, fit for high-feed cutting.
- Universal insert, suitable for inserts of several brands.
- Wide application, such as cavity milling, reaming, slotting and profiling.

规格型号 Specification

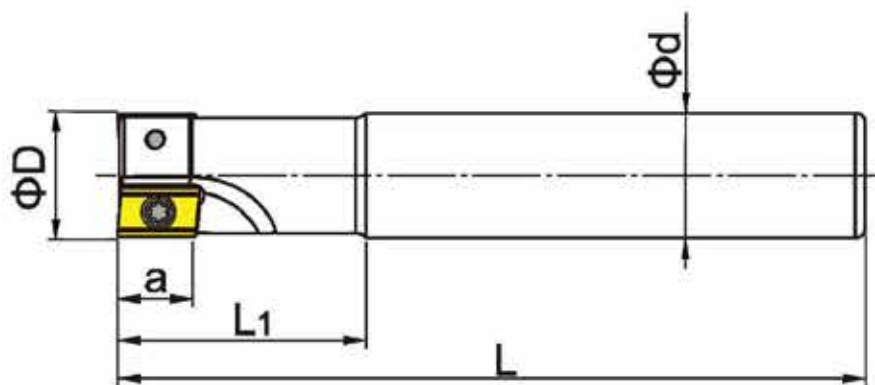


技术参数：TECHNICAL SPECIFICATIONS

规格Model	齿数 Teeth Z	直径 DIA D	接口 Joiner d	高度 Height H	适用刀片 Suitable Insert	螺钉 Screw	压板 Clamp	扳手 Wrench	重量 Weight
50A04R-SCMORP10-22	4	50	22	50	RC*T10T3...	M3.5	5R	T15	0.35
63A04R-SCMORP10-22	4	63	22	50	RC*T10T3...	M3.5	5R	T15	0.55
80A05R-SCMORP10-27	5	80	27	50	RC*T10T3...	M3.5	5R	T15	1.10
50A04R-SCMORP12-22	4	50	22	50	RC*T1204...	M3.5	6R	T15	0.35
63A04R-SCMORP12-22	4	63	22	50	RC*T1204...	M3.5	6R	T15	0.55
80A05R-SCMORP12-27	5	80	27	50	RC*T1204...	M3.5	6R	T15	1.10

072 直角台肩铣刀
Square Shoulder End Mill

规格型号 Specification



特性

- 整体刀体、刚性好, 适合粗加工。特殊合金钢材料, 耐磨性更好, 寿命更长。
- 高速粗铣去除余量, 适合大功率机床。
- 刀片通用性好, 多品牌通用。

Features

- Integral cutter body with high rigidity, fit for rough machining.
- Special alloy steel materials are adopted with better abrasion resistance and longer lifetime.
- Universal insert, suitable for various brands.

铣刀部分 MILLING CUTTER

钻头部分
DRILLING

镗刀部分
BORING TOOL

刀柄部分
TOOLHOLDER

非标刀具部分
NON-STANDARD TOOL

铣刀部分
MILLING CUTTER

技术参数： TECHNICAL SPECIFICATIONS

规格 Model	齿数 Teeth Z	直径 DIA D	柄部 Shank d	有效 Effective Length L1	总长 Total Length L	图示 Fig	适用刀片 Suitable Insert	螺钉 Screw	扳手 Wrench
300R-C10-10-100	1	10	10	25	100	A	APMT1135...	M2.5	T8
300R-C12-12-130	1	12	12	25	130	A	APMT1135...	M2.5	T8
300R-C16-16-120	2	16	16	40	120	A	APMT1135...	M2.5	T8
300R-C16-16-160	2	16	16	50	160	A	APMT1135...	M2.5	T8
300R-C16-16-180	2	16	16	60	180	B	APMT1135...	M2.5	T8
300R-C16-16-200	2	16	16	60	200	B	APMT1135...	M2.5	T8
300R-C20-20-120	2	20	20	50	120	B	APMT1135...	M2.5	T8
300R-C20-20-160	2	20	20	60	160	B	APMT1135...	M2.5	T8
300R-C20-20-200	2	20	20	70	200	B	APMT1135...	M2.5	T8
400R-C25-25-160	2	25	25	70	160	A	APMT1604...	M4	T15
400R-C25-25-200	2	25	25	70	200	B	APMT1604...	M4	T15
400R-C25-25-250	2	25	25	80	250	B	APMT1604...	M4	T15
400R-C25-25-300	2	25	25	80	300	B	APMT1604...	M4	T15
400R-C32-32-160	2	32	32	48	160	A	APMT1604...	M4	T15
400R-C32-32-200	2	32	32	48	200	B	APMT1604...	M4	T15
400R-C32-32-250	2	32	32	48	250	B	APMT1604...	M4	T15
400R-C32-35-160-2T	2	35	32	48	160	A	APMT1604...	M4	T15
400R-C32-35-200-2T	2	35	32	48	200	A	APMT1604...	M4	T15
400R-C32-35-250-2T	2	35	32	60	250	A	APMT1604...	M4	T15
400R-C32-35-300-2T	2	35	32	60	300	A	APMT1604...	M4	T15
400R-C32-35-160-3T	3	35	32	48	160	A	APMT1604...	M4	T15
400R-C32-35-200-3T	3	35	32	48	200	A	APMT1604...	M4	T15
400R-C32-35-250-3T	3	35	32	60	250	A	APMT1604...	M4	T15
400R-C32-35-300-3T	3	35	32	60	300	A	APMT1604...	M4	T15
400R-C32-35-400-3T	3	35	32	60	400	A	APMT1604...	M4	T15
400R-C32-35-500-3T	3	35	32	60	500	A	APMT1604...	M4	T15
400R-C32-40-200-3T	3	40	32	60	200	A	APMT1604...	M4	T15
400R-C32-40-250-3T	3	40	32	60	250	A	APMT1604...	M4	T15
400R-C32-40-300-3T	3	35	32	60	300	A	APMT1604...	M4	T15

创引未来

旨为打造一流刀具生产企业

提供高端数控刀具整体解决方案

Innovation Shape the Future

Aims to create the first-class handle production process

Provide high-end CNC tool overall solution



119

非标刀具部分

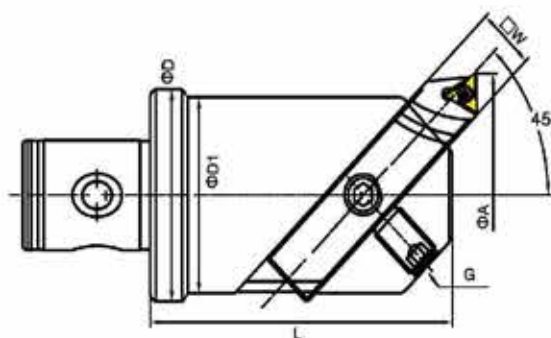
NON-STANDARD TOOL



073

模块式镗刀 Modular Boring Tool
BS模块化镗头 BS Modular Boring Head
BSA斜角型镗头 BSA Bevel-type Angled Boring Head

规格型号 Specification



型号 Cat. No	镗孔范围 Boring Range		尺寸 Size					
	A min	A max	D	D1	L	E	W	G
BSA30-TK2	$\phi 30$	$\phi 42$	24	24	40	1.6	8	M6×1.00P
BSA38-TK3	$\phi 38$	$\phi 52$	31	60	60	2.6	10	M8×1.25P
BSA50-TK4	$\phi 50$	$\phi 65$	42	40	70	3	13	M10×1.50P
BSA62-TK5	$\phi 62$	$\phi 90$	55	50	85	2	16	M12×1.75P
BSA72-TK6	$\phi 72$	$\phi 110$	63	60	98	2.4	19	M12×1.75P

非标刀具部分NON-STANDARD TOOL

铣刀部分
MILLING CUTTER

钻头部分
DRILLING

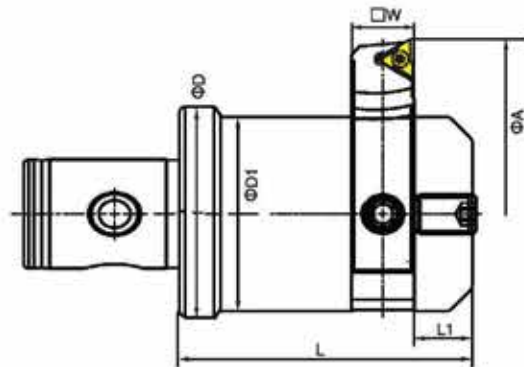
镗刀部分
BORING TOOL

刀柄部分
TOOLHOLDER

非标刀具部分
NON-STANDARD TOOL

BSB斜角型镗头 BSB Bevel-type Angled Boring Head

规格型号 Specification

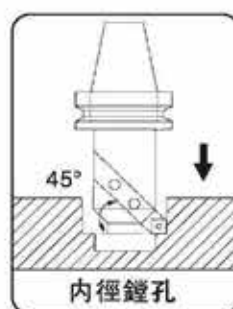
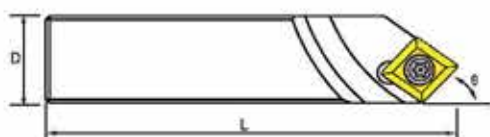


型号 Cat. No	镗孔范围 Boring Range		尺寸 Size					
	A min	A max	D	D1	L	E	W	G
BSB25-TK2	26	52	24	20	45	10	8	M6×1.00P
BSB38-TK3	38	70	31	30	55	10	10	M8×1.25P
BSB50-TK4	50	90	42	40	60	10	13	M10×1.50P
BSB62-TK5	62	115	55	50	70	12	16	M12×1.75P
BSB72-TK6	72	135	63	60	85	12	19	M12×1.75P

074 简易式镗刀 Simple Boring Bar CBS刀夹 CBS Tool Chuck

适用于BSA、BSB粗镗刀，适合重切削加工
Fit for BSA、BSB rough boring cutter, suitable for heavy cutting machining.

规格型号 Specification



型号 Cat. No	D	L	角度 Angle	刀片规格 Insert	螺钉 Clamping Screw	扳手 Wrench
CBS-408	8	50	45°	CCMT0602	M2.5-6.0-3.5-60	T9
CBS-410	10	60				
CBS-413	13	70				
CBS-416	16	100				
CBS-419	19	150				
CBS-425	25	150	90°	CCMT09T3	M4-10-5.7-60	T15
CBS-908	8	50				
CBS-910	10	60				
CBS-913	13	70				
CBS-916	16	100				
CBS-919	19	150				
CBS-925	25	150				

非标刀具部分NON-STANDARD TOOL

铣刀部分
MILLING CUTTER

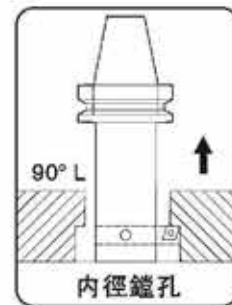
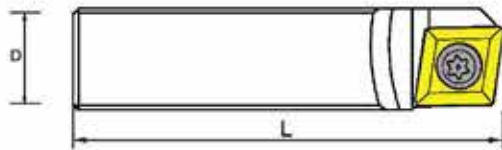
U钻部分
U DRILLING

镗刀部分
BORING TOOL

刀柄部分
TOOL HOLDER

非标刀具部分
NON-STANDARD TOOL

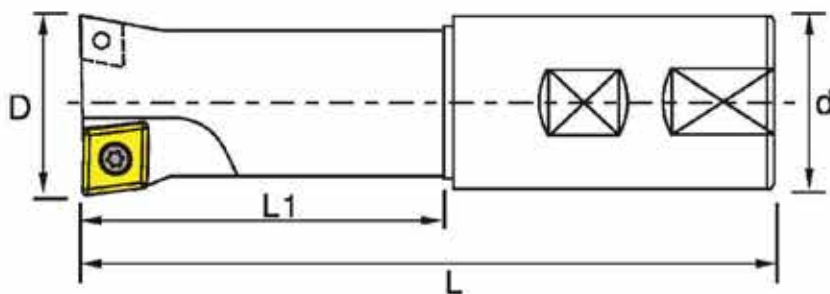
规格型号 Specification



型号 Cat. No	D	L	角度 Angle	刀片规格 Insert	螺钉 Clamping Screw	扳手 Wrench
CBS-408	8	50	90°	CCMT0602	M2.5-6.0-3.5-60	T9
CBS-410	10	60				
CBS-413	13	70		CCMT09T3	M4-10-5.7-60	T15
CBS-416	16	100				
CBS-419	19	150				

075 简易式镗刀 Simple Boring Bar
固定式粗镗刀
TDL Fixed Rough Boring Bar

规格型号 Specification



非标刀具部分NON-STANDARD TOOL

铣刀部分
MILLING CUTTER

U钻部分
U DRILLING

镗刀部分
BORING TOOL

刀柄部分
TOOLHOLDER

非标刀具部分
NON-STANDARD TOOL

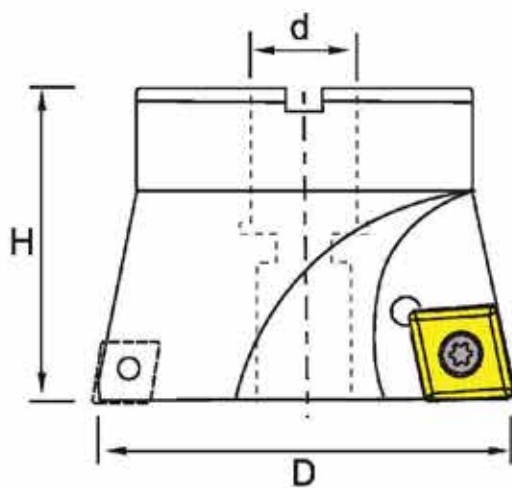
型号 Cat. No	刃数 Teeth	尺寸 Size			
		D	d	L	L1
TDL11.7×126×75×16×1T	1	11.7	16	126	75
TDL11.7×160×100×16×1T	1	11.7	16	160	100
TDL14.7×126×75×16×1T	1	14.7	16	126	75
TDL14.7×156×105×16×1T	1	14.7	16	156	105
TDL14.7×180×120×16×1T	1	14.7	16	180	120
TDL15.7×126×75×16×2T	2	15.7	16	126	75
TDL15.7×156×105×16×2T	2	15.7	16	156	105
TDL15.7×180×120×16×2T	2	15.7	16	180	120
TDL19.7×158×105×20×2T	2	19.7	20	158	105
TDL19.7×190×130×20×2T	2	19.7	20	190	130
TDL24.7×165×105×25×2T	2	24.7	25	165	105
TDL24.7×200×140×25×2T	2	24.7	25	200	140
TDL29.7×169×25×2T	2	29.7	25	169	105
TDL29.7×250×25×2T	2	29.7	25	250	135
TDL34.7×169×32×2T	2	34.7	32	169	170
TDL34.7×250×32×2T	2	34.7	32	250	105
TDL39.7×250×32×2T	2	39.7	32	250	135
TDL41.7×300×32×2T	2	41.7	32	300	170
TDL47.7×300×42×2T	2	47.7	42	300	105
TDL49.7×300×42×2T	2	49.7	42	300	135
TDL54.7×300×42×2T	2	54.7	42	300	170

配件Parts

型号 Cat. No	刀片 Insert	螺钉 Clamping Screw	扳手 Wrench
TDL11.7×126×75×16×1T	CCMT060204	CM2.5×6	T8
TDL29.7×169×25×2T	CCMT09T308	M4×10	T15

076 简易式镗刀 Simple Boring Bar
固定式粗刀头
TDL Fixed Rough Boring Head

规格型号 Specification



非标刀具部分NON-STANDARD TOOL

铣刀部分
MILLING CUTTER

U钻部分
U DRILLING

镗刀部分
BORING TOOL

刀柄部分
TOOLHOLDER

非标刀具部分
NON-STANDARD TOOL

型号 Cat. No	刃数 Teeth	尺寸 Size		
		D	d	L1
TDL-45-22	2	44.7	22	50
TDL-50-22	2	49.7	22	50
TDL-55-22	2	54.7	22	50
TDL-60-22	2	59.7	22	50
TDL-62-22	2	61.7	22	50
TDL-62-25.4	2	61.7	25.4	50
TDL-65-25.4	2	64.7	25.4	50
TDL-70-25.4	2	69.7	25.4	50
TDL-72-25.4	2	71.7	25.4	50
TDL-75-25.4	2	74.7	25.4	50
TDL-80-25.4	2	79.7	25.4	50
TDL-85-25.4	2	84.7	25.4	50
TDL-90-31.75	2	89.7	31.75	50
TDL-95-31.75	2	94.7	31.75	50
TDL-100-31.75	2	99.7	31.75	50

配件Parts

型号 Cat. No	刀片 Insert	螺钉 Clamping Screw	扳手 Wrench
TDL-62	CCMT09T308	M4×10	T15

077 非标双刃组合镗刀
Non-Standard Modular Boring Tool With Twin-Bit

规格型号 Specification



特 性:

- 粗镗、精镗集成在一起，保证加工精度，减少换刀时间，提高加工效率。
- 刀体采用整体合金钢，硬度在HRC56-58，同时经过深冷处理；耐磨损、刚性更好。
- 粗镗也可采用小刀夹方式，便于余量的调整和整体维护。
- 柄部可以根据客户需求进行制作，包括BT系列、CAT系列、HSK系列、NT系列、直柄系列等。
- 可以根据客户要求做动平衡处理，可以满足G2.5、G6.3

Features:

- Integrate rough boring and fine boring together to ensure the machining accuracy, reduce tool change time and improve processing efficiency.
- The cutter body adopts integral alloy steel with the hardness of HRC56-58. Also subzero treatment with wear resistance and better rigidity.

- Rough boring can also use blade chuck to adjust the allowance and maintain the overall.
- Shank can be customized, including BT series, CAT series, HSK series, NT series, straight shank and so on.
- Dynamic balance G2.5 and G6.3 are available according to customers' requirement.

非标刀具部分NON-STANDARD TOOL

铣刀部分
MILLING CUTTER

铰钻部分
B DRILLING

镗刀部分
BORING TOOL

刀柄部分
TOOLHOLDER

非标刀具部分
NON-STANDARD TOOL

078

非标组合精镗刀

Non-Standard Modular Micro Boring Tool

规格型号 Specification



特性:

- 将零件多个孔的加工刀具集成在一起，保证产品加工的同轴度要求，同时减少了换刀时间，提高了加工效率。
- 刀体采用整体合金钢，硬度在HRC56-58，同时经过深冷处理；耐磨损、刚性更好。
- 可以采用多款进口微调精镗单元，满足不同客户的需求；保证加工过程中的微调精度。
- 柄部可以根据客户需求进行制作，包括BT系列、CAT系列、HSK系列、NT系列、直柄系列等。
- 可以根据客户要求做动平衡处理，可以满足G2.5、G6.3。

Features:

- Integrate tools with plurality of holes together to ensure the machining concentricity, reduce tool change time and improve processing efficiency.
- The cutter body adopts integral alloy steel with the hardness of HRC56-58. Also subzero treatment with wear resistance and better rigidity.
- Can use various import fine boring unit to meet demands of different customers. Ensure the machining accuracy.
- Shank can be customized, including BT series, CAT series, HSK series, NT series, straight shank and so on.
- Dynamic balance G2.5 and G6.3 are available according to customers' requirement.

079 非标钻铰组合刀 Non-Standard Modular Drilling And Co unter-boring Tool

规格型号 Specification



特 性:

- 钻孔、铰孔集成在一起，保证加工精度，减少换刀时间，提高加工效率。
- 刀体采用整体合金钢，硬度在HRC56-58，同时经过深冷处理；耐磨损、刚性更好。
- 刀片可以采用TC系列和CC系列，钻头可以采用直槽型和螺旋槽型。
- 柄部可以根据客户需求进行制作，包括BT系列、CAT系列、HSK系列、NT系列、直柄系列等。
- 可以根据客户要求做动平衡处理，可以满足G2.5、G6.3

Features :

- Integrate hole drilling and dimpling together to ensure the machining accuracy, reduce tool change time and improve processing efficiency.
- The cutter body adopts integral alloy steel with the hardness of HRC56-58. Also subzero treatment with wear resistance and better rigidity.
- Inserts can select TC series and CC series. Drill bits can use straight groove and spiral groove type.
- Shank can be customized, including BT series, CAT series, HSK series, NT series, straight shank and so on.
- Dynamic balance G2.5 and G6.3 are available according to customers' requirement.

非标刀具部分NON-STANDARD TOOL

铣刀部分
MILLING CUTTER

钻头部分
DRILLING

镗刀部分
BORING TOOL

刀柄部分
TOOLHOLDER

非标刀具部分
NON-STANDARD TOOL

080 非标组合反镗刀 Non-Standard Modular Back Boring Tool

规格型号 Specification



特 性:

- 通过偏心进刀实现反镗孔功能，刀夹式设计经济性更好。
- 多孔加工集成在一起，保证加工精度，减少换刀时间，提高加工效率。
- 刀体采用整体合金钢，硬度在HRC56-58，同时经过深冷处理；耐磨损、刚性更好。
- 刀片可以采用TC系列和CC系列，通用性更好。
- 柄部可以根据客户需求进行制作，包括BT系列、CAT系列、HSK系列、NT系列、直柄系列等。
- 可以根据客户要求做动平衡处理，可以满足G2.5、G6.3

Features :

- Realize back boring through eccentric feeding. Tool chuck design achieves better cost effectiveness.
- Integrate porous machining together to ensure the machining concentricity, reduce tool change time and improve processing efficiency.
- The cutter body adopts integral alloy steel with the hardness of HRC56-58. Also subzero treatment with wear resistance and better rigidity.
- Inserts can select TC series and CM series. Better universality.
- Shank can be customized, including BT series, CAT series, HSK series, NT series, straight shank and so on.
- Dynamic balance G2.5 and G6.3 are available according to customers' requirement.

081 非标组合镗刀 Non-Standard Modular Boring Tool

规格型号 Specification



特 性:

- 前端因孔直径小刀夹不能安装，采用分体式设计，其它位置采用刀夹式设计，保证后期经济。
- 多孔加工集成在一起，保证加工精度，减少换刀时间，提高加工效率。
- 刀体采用整体合金钢，硬度在HRC56-58，同时经过深冷处理；耐磨损、刚性更好。
- 刀片可以采用TC系列和CC系列，通用性更好。
- 柄部可以根据客户需求进行制作，包括BT系列、CAT系列、HSK系列、NT系列、直柄系列等。
- 可以根据客户要求做动平衡处理，可以满足G2.5、G6.3

Features:

- Small chuck can not be installed in front end for the hole diameter. So the front end adopts split design while others use tool chuck design, achieving the latter economic security.
- Realize back boring through eccentric feeding. Tool chuck design achieves better cost effectiveness.
- Integrate porous machining together to ensure the machining concentricity, reduce tool change time and improve processing efficiency.
- The cutter body adopts integral alloy steel with the hardness of HRC56-58. Also subzero treatment with wear resistance and better rigidity.
- Inserts can select TC series and CC series. Better universality.
- Shank can be customized, including BT series, CAT series, HSK series, NT series, straight shank and so on.
- Dynamic balance G2.5 and G6.3 are available according to customers' requirement.

非标刀具部分NON-STANDARD TOOL

铣刀部分
MILLING CUTTER

钻头部分
DRILLING

镗刀部分
BORING TOOL

刀柄部分
TOOLHOLDER

非标刀具部分
NON-STANDARD TOOL

082 套式组合镗刀 Modular Shell Boring Tool

规格型号 Specification



特性:

- 采用套式结构设计，对于后期使用可以降低刀柄的采购成本。
- 多孔加工集成在一起，保证加工精度，减少换刀时间，提高加工效率。
- 刀体采用整体合金钢，硬度在HRC56-58，同时经过深冷处理；耐磨损、刚性更好。
- 刀片可以采用TC系列和CC系列，通用性更好。
- 根据机床功率、孔径大小等，可以设计多齿加工，提高加工效率。
- 主要应用于孔径大、便于排屑场合。
- 可以根据客户要求做动平衡处理，可以满足G2.5、G6.3

Features:

- Shell structure design may reduce the purchase cost of holders during the later usage.
- Integrate porous machining together to ensure the machining concentricity, reduce tool change time and improve processing efficiency.
- The cutter body adopts integral alloy steel with the hardness of HRC56-58. Also subzero treatment with wear resistance and better rigidity.
- Inserts can select TC series and CC series. Better universality.
- Multi-teeth machining can be designed according to the machine tool power, pore size and others. Increase processing efficiency.
- Best apply to situations of large diameter and easy to chip evacuating.
- Dynamic balance G2.5 and G6.3 are available according to customers' requirement.

083 非标三面刃铣刀
Non-Standard Side Milling Tool

规格型号 Specification



特 性:

- 采用整体式结构设计，有力的增强了刀具的整体刚性，使加工过程更加顺利。
- 刀体采用整体合金钢，硬度在HRC56-58，同时经过深冷处理；耐磨损、刚性更好。
- 刀片可以采用多种款式规格，根据不同的工况以及客户的要求可以完美搭配。
- 根据机床功率、孔径大小等，可以设计多齿加工，提高加工效率。
- 也可根据客户加工产品的不同，设计锥度、燕尾槽等多种款式。
- 可以根据客户要求做动平衡处理，可以满足G2.5、G6.3

Features:

- Integral structure design strongly increases the whole rigidity of the tools, making more fluent processing.
- The cutter body adopts integral alloy steel with the hardness of HRC56-58. Also subzero treatment with wear resistance and better rigidity.
- Inserts can select various series. It can be perfectly arranged depends on the working conditions and customers' requirements.
- Multi-teeth machining can be designed according to the machine tool power, pore size and others. Increase processing efficiency.
- Various types can be customized according to different processed product, such as taper, dovetail groove types and so on.
- Dynamic balance G2.5 and G6.3 are available according to customers' requirement.

非标刀具部分NON-STANDARD TOOL

铣刀部分
MILLING CUTTER

U钻部分
U DRILLING

镗刀部分
BORING TOOL

刀柄部分
TOOL HOLDER

非标刀具部分
NON-STANDARD TOOL

084

非标双刃车刀

Non-Standard Twin-Bit Turning Tool

规格型号 Specification



特 性:

- ◎双刃车刀可以减少刀具库存量。
- ◎可以加工端面，外圆，内孔；减少换刀时间，提高加工效率。
- ◎刀体采用整体合金钢，硬度在HRC56-58，同时经过深冷处理；耐磨损、刚性更好。
- ◎刀片可以根据客户多款车刀片系列，通用性更好。
- ◎车刀柄部可设计成为标准车刀系列、方形系列、HSK系列、Capto系列等。

Features:

- ◎Twin-bit turning tool can reduce holder storage.
- ◎Apply to machining of end face, external and internal. Reduce tool change time and improve processing efficiency.
- ◎The cutter body adopts integral alloy steel

with the hardness of HRC56-58. Also subzero treatment with wear resistance and better rigidity.

- ◎Inserts can select various series depends on the customer. Better universality.
- ◎Shank of turning cutter can be designed to standard turning tool series, square series, HSK series, Capto series and so on.

085 非标玉米铣刀 Non-Standard Shell Milling Tool

规格型号 Specification



特 性:

- 采用整体式结构设计，有力的增强了刀具的整体刚性，使加工过程更加顺利。
- 刀体采用整体合金钢，硬度在HRC56-58，同时经过深冷处理；耐磨损、刚性更好。
- 刀片可以采用多种款式规格，根据不同的工况以及客户的要求可以完美搭配。
- 柄部可以根据客户需求进行制作，包括BT系列、CAT系列、HSK系列、NT系列、直柄系列等。
- 采用螺旋槽侧齿设计，便于排屑、切削轻快。
- 也可根据客户加工产品的不同，设计锥度玉米铣刀等多种款式。
- 可以根据客户要求做动平衡处理，可以满足G2.5、G6.3

Features:

- Integral structure design increases the whole rigidity of the tools, making more fluent processing.
- The cutter body adopts integral alloy steel with the hardness of HRC56-58. Also subzero treatment with wear resistance and better rigidity.
- Inserts can select various series. It can be perfectly arranged depends on the working conditions and customers' requirements.

- Shank can be customized, including BT series, CAT series, HSK series, NT series, straight shank and so on.
- Spiral groove side set design, easy to chip evacuating and cutting.
- Various types can be customized according to different processed product, such as taper shell milling cutter and so on.
- Dynamic balance G2.5 and G6.3 are available according to customers' requirement.

非标刀具部分NON-STANDARD TOOL

铣刀部分
MILLING CUTTER

钻部分
DRILLING

镗刀部分
BORING TOOL

刀柄部分
TOOLHOLDER

非标刀具部分
NON-STANDARD TOOL

086 非标套镗刀 Non-Standard Shell Boring Tool

规格型号 Specification



特 性:

- 采用整体式结构设计，有力的增强了刀具的整体刚性，使加工过程更加顺利。
- 刀体采用整体合金钢，硬度在HRC56-58，同时经过深冷处理；耐磨损、刚性更好。
- 刀片可以采用多种款式规格，根据不同的工况以及客户的要求可以完美搭配。
- 柄部可以根据客户需求进行制作，包括BT系列、CAT系列、HSK系列、NT系列、直柄系列等。
- 加工位置可以采用刀片式设计、刀夹式设计、精镗单元等多种组合。
- 可以根据客户要求做动平衡处理，可以满足G2.5、G6.3

Features :

- Integral structure design increases the whole rigidity of the tools, making more fluent processing.
- The cutter body adopts integral alloy steel with the hardness of HRC56-58. Also subzero treatment with wear resistance and better rigidity.
- Inserts can select various series. It can be

perfectly arranged depends on the working conditions and customers' requirements.

- Shank can be customized, including BT series, CAT series, HSK series, NT series, straight shank and so on.
- Various modules are available, such as blade type design, cutter chuck type, fine boring unit and so on.
- Dynamic balance G2.5 and G6.3 are available according to customers' requirement.

087 非标浅孔钻 Non-Standard Short Hole Drill

规格型号 Specification



特性:

- 采用整体式结构设计，有力的增强了刀具的整体刚性，使加工过程更加顺利。
- 刀体采用整体合金钢，硬度在HRC56-58，同时经过深冷处理；耐磨损、刚性更好。
- 刀片采用目前常用规格，也可根据用户提供刀片进行定制。
- 柄部可以根据客户需求进行制作，包括BT系列、CAT系列、HSK系列、NT系列、直柄系列等。
- 排屑槽可以按照用户需求设计生产，可以做成直槽排屑、螺旋排屑等结构。
- 可以做多台阶加工或倒角。
- 可以根据客户要求做动平衡处理，可以满足G2.5、G6.3。

Features:

- Integral structure design increases the whole rigidity of the tools, making more fluent processing.
- The cutter body adopts integral alloy steel with the hardness of HRC56-58. Also subzero treatment with wear resistance and better rigidity.
- Inserts adopt current common size. Customization can be accepted.
- Shank can be customized, including BT series, CAT series, HSK series, NT series, straight shank and so on.
- Chip groove can be designed to produce, straight flute chip, spiral flute chip and others are available.
- For multi-step machining or chamfering.
- Dynamic balance G2.5 and G6.3 are available according to customers' requirement.

潍坊威骐机械有限公司

Weifang Wilda Machinery Co.,Ltd

Add:No.3,Yongkang Jie,Weifang Economic Development Zone,
Weifang City,Shandong,P.R.China.

Tel:(86)-536-8651769,0135 0649 6031

Fax:(86)-536-8668039

E-mail:wilda.wang@vip.163.com/victor_wilda@163.com