



D300/400 系列交流发电直流电焊两用机

D300/400 series A.C electricity generating & D.C welding double-duty machine



D250/300/400(1500rpm)



D300(3000rpm)



TR-300D(3000rpm)

一、使用范围 Applicable scope

D300/D400 型交流发电直流电焊两用机，是本公司最新研制可以同时提供交流发电、直流电焊两用功能的两用机，本机可用汽油机或柴油机组成移动或固定式电源，在 1500/3000 转 / 分钟这个转速下实现工频交流发电，直流电焊两种功能。

D250/D300/D400 A.C & D.C electrical machine is our new product that can provide A.C generating and D.C welding function simultaneously. Either gasoline engine or diesel can act as a movable / fixed power, and to realize its double-function, a speed of 1500/3000 circles per minute is also needed.

同时该机还可同时输出 1500W 交流电，电压为 220V，频率为 50HZ，适合照明、电风扇、小功率家用电器以及野外施工时需用交流电的场合。

Also the machine can generate an A.C of 1500 W, voltage of 220V and frequency of 50HZ, which can be used as a illumination, electric fan, and small power's household appliances, as well as the work in the field where the A.C needed

二、参数及使用规范：Parameter and applicable specification

本机额定转速为 1500/3000 转 / 分钟，作为发电部分使用时应保持这个转速（当电压为 220V 时），发电部分功率为 1500W，电焊部分使用与焊条直径及负载持续率的关系，请参阅以下表格，请遵照此表格规定的的数据使用。

The machine's rated speed is 1500/3000 circles per minute which is needed while generating electricity and the generated voltage is 220V, electric power is 1500W; see below form for the related parameter:



TR-300D brush holder assembly

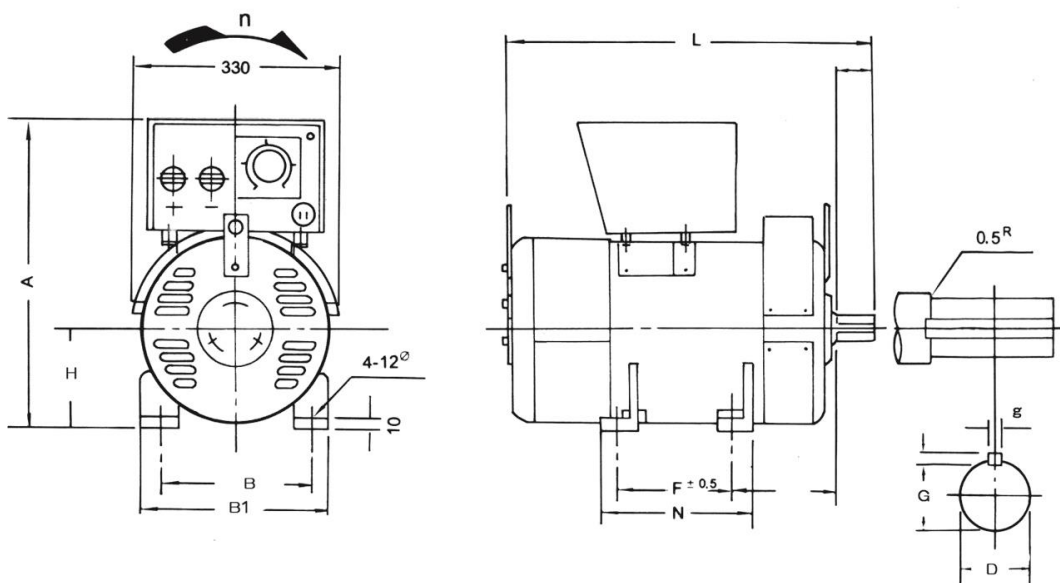


TR-300D inside



TR-300D Rotor

Commutator pure DC arc welding generator



外形尺寸 Dimensions(mm)

MODEL	L	A	F	N	B	B1	H	D	G	g
TR-250D	575	490	185	245	240	290	160	42	42	12
TR-300D	575	490	185	245	240	290	160	42	42	12
D250	580	518	254	285	254	292	160	38	33	10
D300	580	518	254	285	254	292	160	38	33	10
D400	580	518	254	285	254	292	160	38	33	10
D300(3000rpm)	480	450	185	233	205	245	135	32	27	10

技术参数 Technical Data

SPECIFICATION	MODEL	TR-250D	TR-300D	D250	D300	D400	D300
Type		Self-excited Third brush type		Self-excited			PMG+brushless
Output	kw	7	10	8	10	12	10
Voltage	V	28	33	28	33	35	33
Welding Current	A	125-250	125-300	125-250	125-300	125-400	125-300
Coated electrodes	mm	3.2-4	3.2-6	3.2-4	3.2-5	3.2-6	3.2-5
Duty cycle	%	50		40	35	30	30
Rated Speed	RPM	3000		1500	1500	1500	3000
Rated Output	kw	A.C 1.5KW,1 phase					
Voltage	V	A.C.220V					
Frequency	Hz	50					